

Datasheet for ABIN7144005
anti-CD13 antibody (AA 34-219)



[Go to Product page](#)

4 Images

Overview

Quantity:	100 µg
Target:	CD13 (ANPEP)
Binding Specificity:	AA 34-219
Reactivity:	Human
Host:	Rabbit
Clonality:	Polyclonal
Conjugate:	This CD13 antibody is un-conjugated
Application:	Western Blotting (WB), ELISA, Immunohistochemistry (IHC), Immunofluorescence (IF)

Product Details

Immunogen:	Recombinant Human Aminopeptidase N protein (34-219AA)
Isotype:	IgG
Cross-Reactivity:	Human, Mouse
Purification:	>95%, Protein G purified

Target Details

Target:	CD13 (ANPEP)
Alternative Name:	ANPEP (ANPEP Products)
Background:	Background: Broad specificity aminopeptidase. Plays a role in the final digestion of peptides generated from hydrolysis of proteins by gastric and pancreatic proteases. May play a critical

Target Details

role in the pathogenesis of cholesterol gallstone disease. May be involved in the metabolism of regulatory peptides of diverse cell types, responsible for the processing of peptide hormones, such as angiotensin III and IV, neuropeptides, and chemokines. Found to cleave antigen peptides bound to major histocompatibility complex class II molecules of presenting cells and to degrade neurotransmitters at synaptic junctions. Is also implicated as a regulator of IL-8 bioavailability in the endometrium, and therefore may contribute to the regulation of angiogenesis. Is used as a marker for acute myeloid leukemia and plays a role in tumor invasion. In case of human coronavirus 229E (HCoV-229E) infection, serves as receptor for HCoV-229E spike glycoprotein. Mediates as well human cytomegalovirus (HCMV) infection. Aliases: Alanyl (membrane) aminopeptidase antibody, Alanyl aminopeptidase antibody, Aminopeptidase M antibody, Aminopeptidase N antibody, AMPN_HUMAN antibody, ANPEP antibody, AP M antibody, AP N antibody, AP-M antibody, AP-N antibody, APN antibody, CD 13 antibody, CD13 antibody, CD13 antigen antibody, gp150 antibody, hAPN antibody, LAP 1 antibody, LAP1 antibody, Microsomal aminopeptidase antibody, Myeloid plasma membrane glycoprotein CD13 antibody, p150 antibody, PEPN antibody

UniProt: [P15144](#)

Pathways: [Peptide Hormone Metabolism](#), [Regulation of Systemic Arterial Blood Pressure by Hormones](#)

Application Details

Application Notes: Recommended dilution: WB:1:500-1:5000, IHC:1:20-1:200, IF:1:50-1:200,

Restrictions: For Research Use only

Handling

Format: Liquid

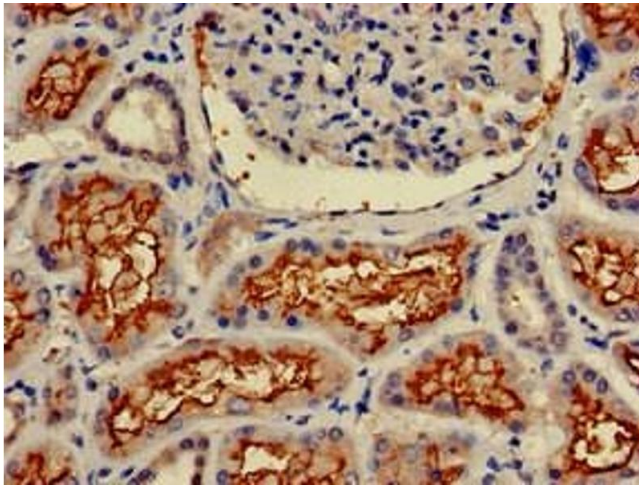
Buffer: Preservative: 0.03 % Proclin 300
Constituents: 50 % Glycerol, 0.01M PBS, pH 7.4

Preservative: ProClin

Precaution of Use: This product contains ProClin: a POISONOUS AND HAZARDOUS SUBSTANCE which should be handled by trained staff only.

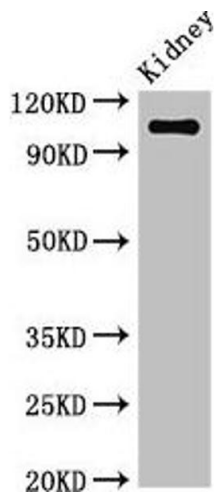
Storage: -20 °C,-80 °C

Storage Comment: Upon receipt, store at -20°C or -80°C. Avoid repeated freeze.



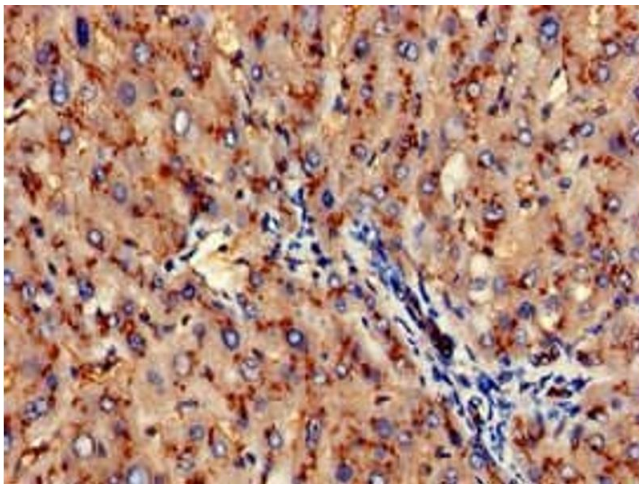
Immunohistochemistry

Image 1. Immunohistochemistry of paraffin-embedded human kidney tissue using ABIN7144005 at dilution of 1:100



Western Blotting

Image 2. Western Blot Positive WB detected in: Mouse kidney tissue All lanes: ANPEP antibody at 3.4 µg/mL Secondary Goat polyclonal to rabbit IgG at 1/50000 dilution Predicted band size: 110 kDa Observed band size: 110 kDa



Immunohistochemistry

Image 3. Immunohistochemistry of paraffin-embedded human liver tissue using ABIN7144005 at dilution of 1:100

Please check the [product details page](#) for more images. Overall 4 images are available for ABIN7144005.