

Datasheet for ABIN7144013  
**anti-RHCG antibody (AA 416-479)**

## 3 Images

[Go to Product page](#)

## Overview

Quantity:	100 µg
Target:	RHCG
Binding Specificity:	AA 416-479
Reactivity:	Human
Host:	Rabbit
Clonality:	Polyclonal
Conjugate:	This RHCG antibody is un-conjugated
Application:	Western Blotting (WB), ELISA, Immunohistochemistry (IHC)

## Product Details

Immunogen:	Recombinant Human Ammonium transporter Rh type C protein (416-479AA)
Isotype:	IgG
Cross-Reactivity:	Human, Rat
Purification:	>95%, Protein G purified

## Target Details

Target:	RHCG
Alternative Name:	RHCG ( <a href="#">RHCG Products</a> )
Background:	Background: Functions as an electroneutral and bidirectional ammonium transporter. May regulate transepithelial ammonia secretion.

## Target Details

Aliases: Ammonium transporter Rh type C antibody, C15orf6 antibody, CDRC2 antibody, chromosome 15 open reading frame 6 antibody, PDRC2 antibody, Rh family type C glycoprotein antibody, Rh glycoprotein kidney antibody, Rh type C glycoprotein antibody, rhcg antibody, RHCG\_HUMAN antibody, Rhesus blood group family type C glycoprotein antibody, Rhesus blood group, C glycoprotein antibody, RHGK antibody, SLC42A3 antibody, Tumor-related protein DRC2 antibody

UniProt: [Q9UBD6](#)

## Application Details

Application Notes: Recommended dilution: WB:1:500-1:5000, IHC:1:200-1:500,

Restrictions: For Research Use only

## Handling

Format: Liquid

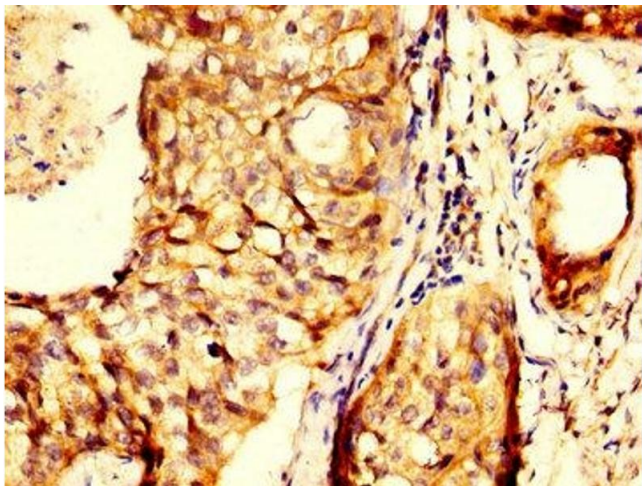
Buffer: Preservative: 0.03 % Proclin 300  
Constituents: 50 % Glycerol, 0.01M PBS, pH 7.4

Preservative: ProClin

Precaution of Use: This product contains ProClin: a POISONOUS AND HAZARDOUS SUBSTANCE which should be handled by trained staff only.

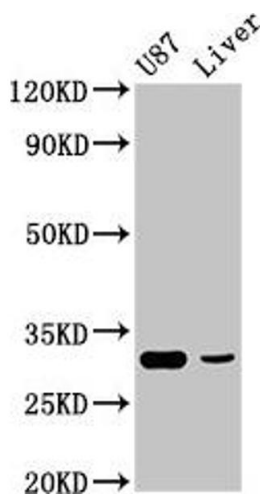
Storage: -20 °C,-80 °C

Storage Comment: Upon receipt, store at -20°C or -80°C. Avoid repeated freeze.



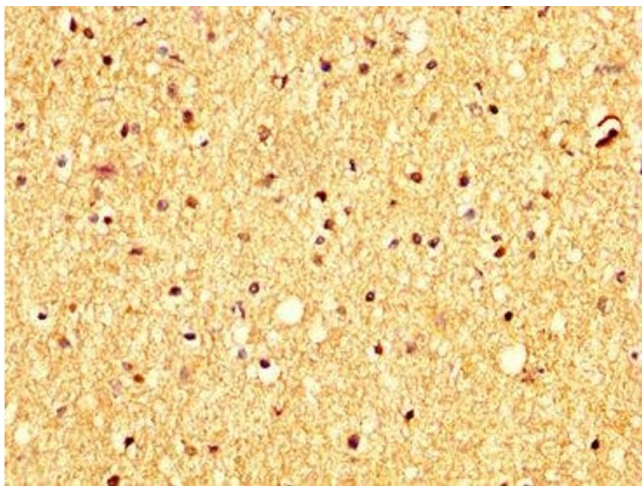
#### Immunohistochemistry

**Image 1.** IHC image of ABIN7144013 diluted at 1:300 and staining in paraffin-embedded human cervical cancer performed on a Leica Bond™ system. After dewaxing and hydration, antigen retrieval was mediated by high pressure in a citrate buffer (pH 6.0). Section was blocked with 10% normal goat serum 30min at RT. Then primary antibody (1% BSA) was incubated at 4°C overnight. The primary is detected by a biotinylated secondary antibody and visualized using an HRP conjugated SP system.



#### Western Blotting

**Image 2.** Western Blot Positive WB detected in: U87 whole cell lysate, Rat liver tissue All lanes: ITM2B antibody at 4.9 µg/mL Secondary Goat polyclonal to rabbit IgG at 1/50000 dilution Predicted band size: 54 kDa Observed band size: 31 kDa



#### Immunohistochemistry

**Image 3.** IHC image of ABIN7144013 diluted at 1:300 and staining in paraffin-embedded human brain tissue performed on a Leica Bond™ system. After dewaxing and hydration, antigen retrieval was mediated by high pressure in a citrate buffer (pH 6.0). Section was blocked with 10% normal goat serum 30min at RT. Then primary antibody (1% BSA) was incubated at 4°C overnight. The primary is detected by a biotinylated secondary antibody and visualized using an HRP conjugated SP system.