



Datasheet for ABIN7144025
anti-AMPD3 antibody (AA 1-260)



[Go to Product page](#)

2 Images

Overview

Quantity:	100 µL
Target:	AMPD3
Binding Specificity:	AA 1-260
Reactivity:	Human
Host:	Rabbit
Clonality:	Polyclonal
Conjugate:	This AMPD3 antibody is un-conjugated
Application:	Western Blotting (WB), Immunohistochemistry (IHC), ELISA

Product Details

Immunogen:	Recombinant Human AMP deaminase 3 protein (1-260AA)
Isotype:	IgG
Cross-Reactivity:	Human, Mouse
Purification:	Antigen Affinity Purified

Target Details

Target:	AMPD3
Alternative Name:	AMPD3 (AMPD3 Products)
Background:	Background: AMP deaminase plays a critical role in energy metabolism. Aliases: Adenosine monophosphate deaminase (isoform E) antibody, Adenosine

Target Details

monophosphate deaminase 3 antibody, AMP aminohydrolase antibody, AMP deaminase 3 antibody, AMP deaminase isoform E antibody, Ampd3 antibody, AMPD3_HUMAN antibody, Erythrocyte AMP deaminase antibody, Erythrocyte specific AMP deaminase antibody, Erythrocyte specific protein antibody, Erythrocyte type AMP deaminase antibody, Erythroid Marker antibody, Myoadenylate deaminase antibody, OTTHUMP00000230743 antibody, OTTHUMP00000230746 antibody, OTTHUMP00000230747 antibody, OTTHUMP00000230748 antibody, OTTHUMP00000230749 antibody

UniProt: [Q01432](#)

Application Details

Application Notes: Recommended dilution: WB:1:500-1:2000, IHC:1:20-1:200,

Restrictions: For Research Use only

Handling

Format: Liquid

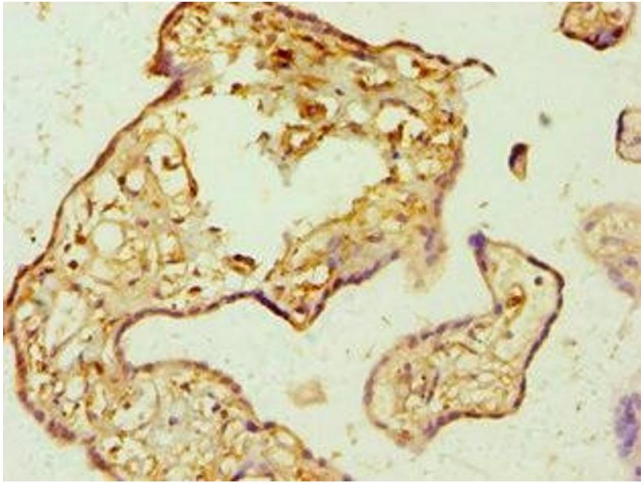
Buffer: PBS with 0.02 % sodium azide, 50 % glycerol, pH 7.3.

Preservative: Sodium azide

Precaution of Use: This product contains Sodium azide: a POISONOUS AND HAZARDOUS SUBSTANCE which should be handled by trained staff only.

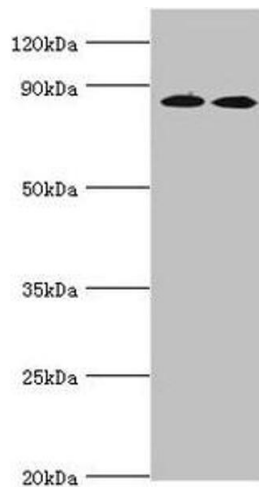
Storage: -20 °C,-80 °C

Storage Comment: Upon receipt, store at -20°C or -80°C. Avoid repeated freeze.



Immunohistochemistry

Image 1. Immunohistochemistry of paraffin-embedded human placenta tissue using ABIN7144025 at dilution of 1:100



Western Blotting

Image 2. Western blot All lanes: AMP deaminase 3 antibody at 2 µg/mL Lane 1: NIH/3T3 whole cell lysate Lane 2: 293T whole cell lysate Lane 3: Mouse lung tissue Secondary Goat polyclonal to rabbit IgG at 1/10000 dilution Predicted band size: 89, 25, 77, 90, 72 kDa Observed band size: 89 kDa