

Datasheet for ABIN7144052  
**anti-ALS2CR12 antibody (AA 26-76)**[Go to Product page](#)

## 2 Images

## Overview

Quantity:	100 µg
Target:	ALS2CR12
Binding Specificity:	AA 26-76
Reactivity:	Human
Host:	Rabbit
Clonality:	Polyclonal
Conjugate:	This ALS2CR12 antibody is un-conjugated
Application:	ELISA, Western Blotting (WB), Immunofluorescence (IF)

## Product Details

Immunogen:	Recombinant Human Amyotrophic lateral sclerosis 2 chromosomal region candidate gene 12 protein (26-76AA)
Isotype:	IgG
Cross-Reactivity:	Human
Purification:	>95%, Protein G purified

## Target Details

Target:	ALS2CR12
Alternative Name:	ALS2CR12 ( <a href="#">ALS2CR12 Products</a> )
Background:	FLACC1 antibody, ALS2CR12Flagellum-associated coiled-coil domain-containing protein 1

## Target Details

antibody, Amyotrophic lateral sclerosis 2 chromosomal region candidate gene 12 protein  
antibody

UniProt: [Q96Q35](#)

## Application Details

Application Notes: Recommended dilution: WB:1:500-1:5000, IF:1:50-1:200,

Restrictions: For Research Use only

## Handling

Format: Liquid

Buffer: Preservative: 0.03 % Proclin 300  
Constituents: 50 % Glycerol, 0.01M PBS, pH 7.4

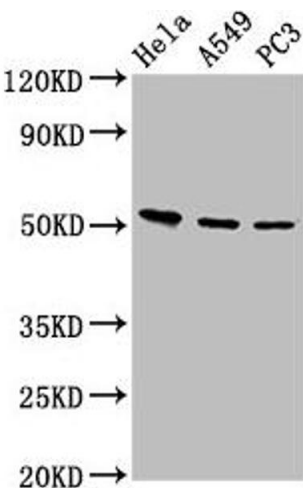
Preservative: ProClin

Precaution of Use: This product contains ProClin: a POISONOUS AND HAZARDOUS SUBSTANCE which should be handled by trained staff only.

Storage: -20 °C,-80 °C

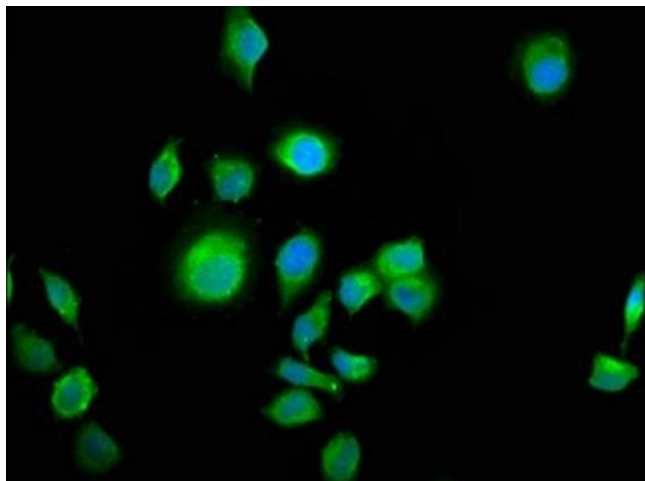
Storage Comment: Upon receipt, store at -20°C or -80°C. Avoid repeated freeze.

## Images



### Western Blotting

**Image 1.** Western Blot Positive WB detected in: HeLa whole cell lysate, A549 whole cell lysate, PC-3 whole cell lysate All lanes: ALS2CR12 antibody at 12 µg/mL Secondary Goat polyclonal to rabbit IgG at 1/50000 dilution Predicted band size: 53, 50 kDa Observed band size: 53 kDa



#### Immunofluorescence

**Image 2.** Immunofluorescence staining of A549 cells with ABIN7144052 at 1:100, counter-stained with DAPI. The cells were fixed in 4% formaldehyde, permeabilized using 0.2% Triton X-100 and blocked in 10% normal Goat Serum. The cells were then incubated with the antibody overnight at 4°C. The secondary antibody was Alexa Fluor 488-conjugated AffiniPure Goat Anti-Rabbit IgG(H+L).