

Datasheet for ABIN7144072  
**anti-ANAPC2 antibody (AA 1-230)**[Go to Product page](#)

## 4 Images

## Overview

Quantity:	100 µL
Target:	ANAPC2
Binding Specificity:	AA 1-230
Reactivity:	Human
Host:	Rabbit
Clonality:	Polyclonal
Conjugate:	This ANAPC2 antibody is un-conjugated
Application:	ELISA, Immunohistochemistry (IHC), Immunofluorescence (IF)

## Product Details

Immunogen:	Recombinant Human Anaphase-promoting complex subunit 2 protein (1-230AA)
Isotype:	IgG
Cross-Reactivity:	Human
Purification:	Antigen Affinity Purified

## Target Details

Target:	ANAPC2
Alternative Name:	ANAPC2 ( <a href="#">ANAPC2 Products</a> )
Background:	Background: Together with the RING-H2 protein ANAPC11, constitutes the catalytic component of the anaphase promoting complex/cyclosome (APC/C), a cell cycle-regulated E3 ubiquitin

## Target Details

ligase that controls progression through mitosis and the G1 phase of the cell cycle. The APC/C complex acts by mediating ubiquitination and subsequent degradation of target proteins: it mainly mediates the formation of 'Lys-11'-linked polyubiquitin chains and, to a lower extent, the formation of 'Lys-48'- and 'Lys-63'-linked polyubiquitin chains. The CDC20-APC/C complex positively regulates the formation of synaptic vesicle clustering at active zone to the presynaptic membrane in postmitotic neurons. CDC20-APC/C-induced degradation of NEUROD2 drives presynaptic differentiation.

Aliases: anapc2 antibody, Anaphase promoting complex subunit 2 antibody, Anaphase-promoting complex subunit 2 antibody, ANC2\_HUMAN antibody, APC2 antibody, Cyclosome subunit 2 antibody, KIAA1406 antibody, OTTHUMP00000022692 antibody, RP11 350O14.5 antibody

UniProt: [Q9UJX6](#)

Pathways: [Regulation of Cell Size](#)

## Application Details

Application Notes: Recommended dilution: IHC:1:20-1:500, IF:1:50-1:200,

Restrictions: For Research Use only

## Handling

Format: Liquid

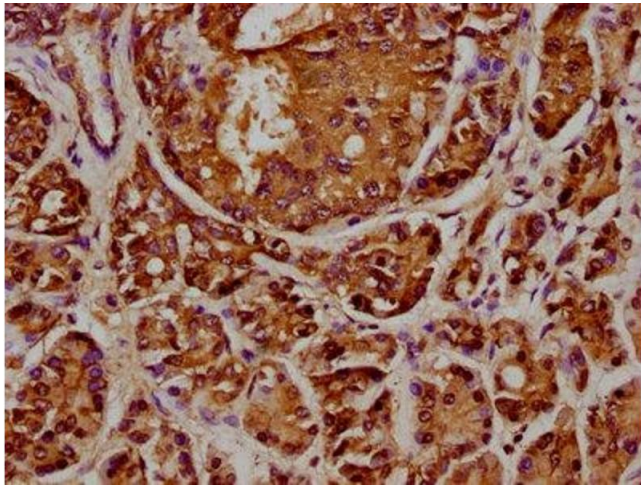
Buffer: PBS with 0.02 % sodium azide, 50 % glycerol, pH 7.3.

Preservative: Sodium azide

Precaution of Use: This product contains Sodium azide: a POISONOUS AND HAZARDOUS SUBSTANCE which should be handled by trained staff only.

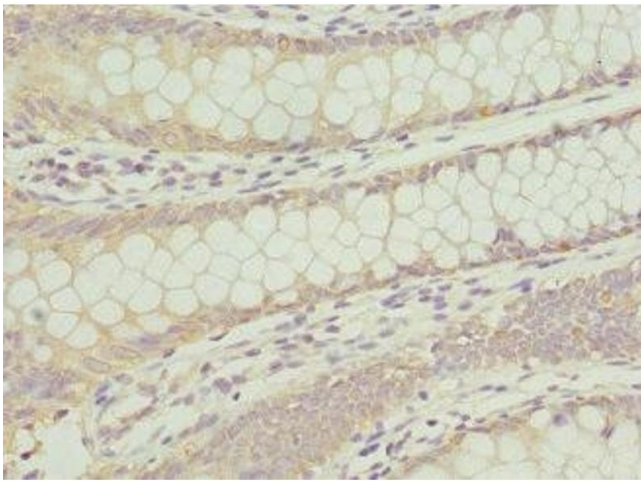
Storage: -20 °C,-80 °C

Storage Comment: Upon receipt, store at -20°C or -80°C. Avoid repeated freeze.



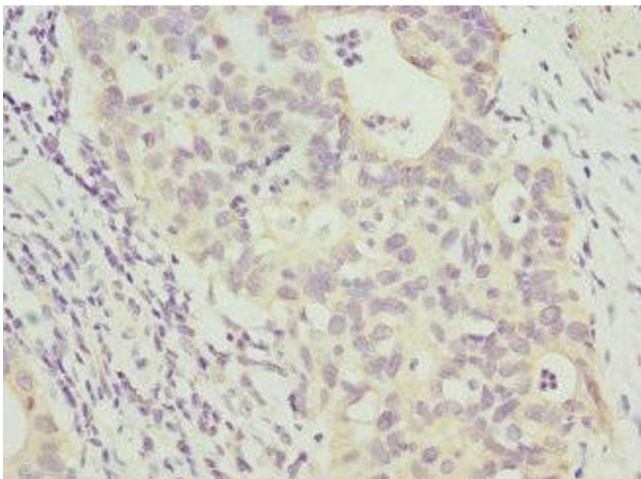
#### Immunohistochemistry

**Image 1.** IHC image of ABIN7144072 diluted at 1:348 and staining in paraffin-embedded human pancreatic cancer performed on a Leica Bond™ system. After dewaxing and hydration, antigen retrieval was mediated by high pressure in a citrate buffer (pH 6.0). Section was blocked with 10% normal goat serum 30min at RT. Then primary antibody (1% BSA) was incubated at 4°C overnight. The primary is detected by a biotinylated secondary antibody and visualized using an HRP conjugated SP system.



#### Immunohistochemistry

**Image 2.** Immunohistochemistry of paraffin-embedded human colon cancer using ABIN7144072 at dilution of 1:100



#### Immunohistochemistry

**Image 3.** Immunohistochemistry of paraffin-embedded human bladder cancer using ABIN7144072 at dilution of 1:100

Please check the [product details page](#) for more images. Overall 4 images are available for ABIN7144072.