

Datasheet for ABIN7144083
anti-ANG antibody (AA 26-147)[Go to Product page](#)

1 Image

Overview

Quantity:	100 µg
Target:	ANG
Binding Specificity:	AA 26-147
Reactivity:	Human
Host:	Rabbit
Clonality:	Polyclonal
Conjugate:	This ANG antibody is un-conjugated
Application:	Immunohistochemistry (IHC), ELISA

Product Details

Immunogen:	Recombinant Human Angiogenin protein (26-147AA)
Isotype:	IgG
Cross-Reactivity:	Human
Purification:	>95%, Protein G purified

Target Details

Target:	ANG
Alternative Name:	ANG (ANG Products)
Background:	Background: May function as a tRNA-specific ribonuclease that abolishes protein synthesis by specifically hydrolyzing cellular tRNAs. Binds to actin on the surface of endothelial cells, once

Target Details

bound, angiogenin is endocytosed and translocated to the nucleus. Angiogenin induces vascularization of normal and malignant tissues. Angiogenic activity is regulated by interaction with RNH1 in vivo.

Aliases: ALS9 antibody, AMYOTROPHIC LATERAL SCLEROSIS antibody, ANG 1 antibody, ANG antibody, ANG I antibody, ANG1 antibody, ANGI antibody, ANGI_HUMAN antibody, Angiogenin antibody, Angiogenin ribonuclease RNase A family, 5 antibody, Epididymis luminal protein 168 antibody, HEL168 antibody, MGC22466 antibody, MGC71966 antibody, Ribonuclease 5 antibody, Ribonuclease RNase A Family 5 antibody, RNase 5 antibody, RNASE4 antibody, RNASE5 antibody

UniProt: [P03950](#)

Application Details

Application Notes: Recommended dilution: IHC:1:20-1:200,

Restrictions: For Research Use only

Handling

Format: Liquid

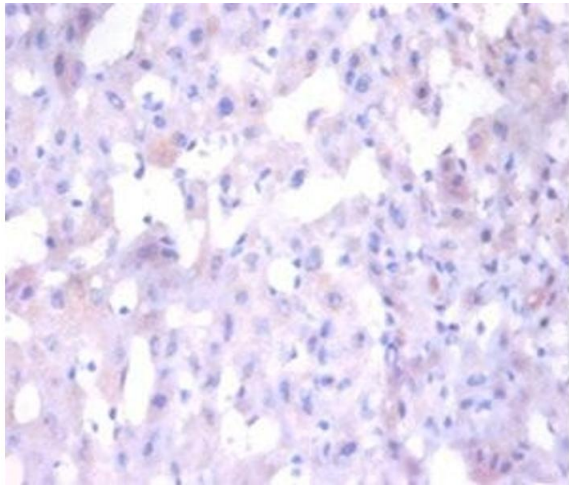
Buffer: Preservative: 0.03 % Proclin 300
Constituents: 50 % Glycerol, 0.01M PBS, PH 7.4

Preservative: ProClin

Precaution of Use: This product contains ProClin: a POISONOUS AND HAZARDOUS SUBSTANCE which should be handled by trained staff only.

Storage: -20 °C,-80 °C

Storage Comment: Upon receipt, store at -20°C or -80°C. Avoid repeated freeze.



Immunohistochemistry

Image 1. Immunohistochemistry of paraffin-embedded human liver tissue using ABIN7144083 at dilution of 1:100