



[Go to Product page](#)

Datasheet for ABIN7144142
anti-SLC4A2 antibody (AA 95-245)

2 Images

Overview

Quantity:	100 µL
Target:	SLC4A2
Binding Specificity:	AA 95-245
Reactivity:	Human
Host:	Rabbit
Clonality:	Polyclonal
Conjugate:	This SLC4A2 antibody is un-conjugated
Application:	Immunohistochemistry (IHC), ELISA

Product Details

Immunogen:	Recombinant Human Anion exchange protein 2 protein (95-245AA)
Isotype:	IgG
Cross-Reactivity:	Human
Purification:	Antigen Affinity Purified

Target Details

Target:	SLC4A2
Alternative Name:	SLC4A2 (SLC4A2 Products)
Background:	Background: Plasma membrane anion exchange protein of wide distribution. Aliases: AE 2 antibody, AE2 anion exchanger antibody, Anion exchange protein 2 antibody,

Target Details

Anion exchanger 2 antibody, B3A2_HUMAN antibody, BAND 3-LIKE PROTEIN antibody, BND3L antibody, EPB3L1 antibody, erythrocyte band 3 antibody, Erythrocyte membrane protein band 3 like 1 antibody, HKB3 antibody, MPB3L antibody, NBND3 antibody, Non-erythroid band 3-like protein antibody, Slc4a2 antibody, Solute carrier family 4 member 2 antibody

UniProt: [P04920](#)

Application Details

Application Notes: Recommended dilution: IHC:1:20-1:200,

Restrictions: For Research Use only

Handling

Format: Liquid

Buffer: PBS with 0.02 % sodium azide, 50 % glycerol, pH 7.3.

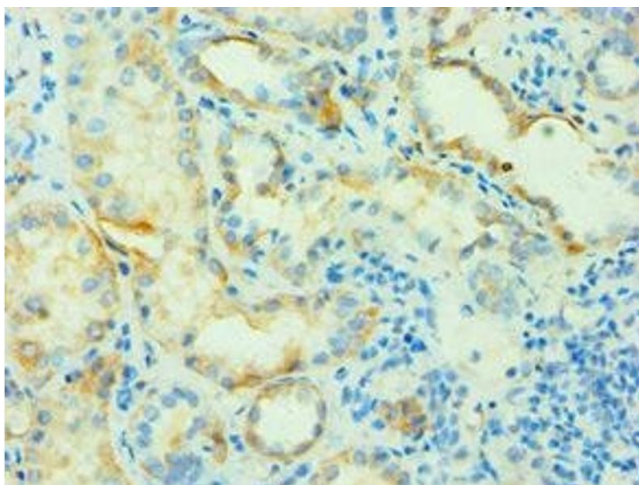
Preservative: Sodium azide

Precaution of Use: This product contains Sodium azide: a POISONOUS AND HAZARDOUS SUBSTANCE which should be handled by trained staff only.

Storage: -20 °C,-80 °C

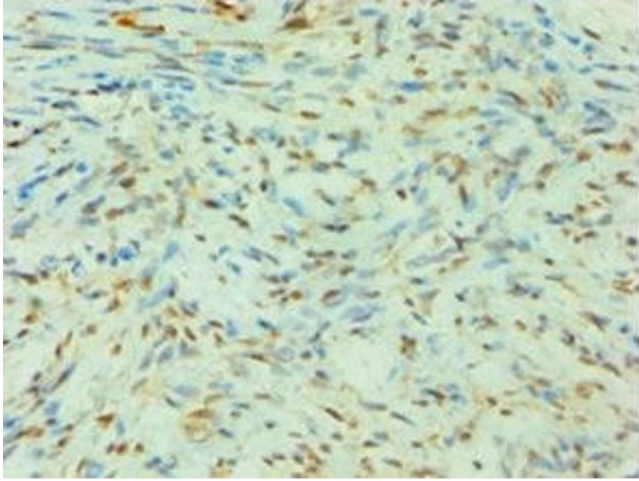
Storage Comment: Upon receipt, store at -20°C or -80°C. Avoid repeated freeze.

Images



Immunohistochemistry

Image 1. Immunohistochemistry of paraffin-embedded human kidney tissue using ABIN7144142 at dilution of 1:100



Immunohistochemistry

Image 2. Immunohistochemistry of paraffin-embedded human breast cancer using ABIN7144142 at dilution of 1:100