

Datasheet for ABIN7144255

**anti-Annexin a1 antibody (AA 5-346)**[Go to Product page](#)**3** Images

## Overview

Quantity:	100 µg
Target:	Annexin a1 (ANXA1)
Binding Specificity:	AA 5-346
Reactivity:	Human
Host:	Rabbit
Clonality:	Polyclonal
Conjugate:	This Annexin a1 antibody is un-conjugated
Application:	Western Blotting (WB), ELISA, Immunoprecipitation (IP), Immunofluorescence (IF)

## Product Details

Immunogen:	Recombinant Human Annexin A1 protein (5-346AA)
Isotype:	IgG
Cross-Reactivity:	Human
Purification:	>95%, Protein G purified

## Target Details

Target:	Annexin a1 (ANXA1)
Alternative Name:	ANXA1 ( <a href="#">ANXA1 Products</a> )
Background:	Background: Calcium/phospholipid-binding protein which promotes membrane fusion and is involved in exocytosis. This protein regulates phospholipase A2 activity. It seems to bind from

## Target Details

two to four calcium ions with high affinity.

Aliases: Annexin 1 antibody, Annexin A1 antibody, Annexin I (lipocortin I) antibody, Annexin I antibody, Annexin-1 antibody, AnnexinA1 antibody, AnnexinI antibody, ANX 1 antibody, ANX A1 antibody, ANX1 antibody, ANXA 1 antibody, ANXA1 antibody, ANXA1 protein antibody, ANXA1\_HUMAN antibody, Calpactin 2 antibody, Calpactin II antibody, Calpactin-2 antibody, CalpactinII antibody, Chromobindin 9 antibody, Chromobindin-9 antibody, Chromobindin9 antibody, HGNC:533 antibody, Lipocortin 1 antibody, Lipocortin I antibody, Lipocortin1 antibody, LipocortinI antibody, LPC 1 antibody, LPC1 antibody, p35 antibody, Phospholipase A2 inhibitory protein antibody

UniProt: [P04083](#)

Pathways: [Hormone Transport](#)

## Application Details

Application Notes: Recommended dilution: WB:1:1000-1:5000, IF:1:50-1:200, IP:1:200-1:2000,

Restrictions: For Research Use only

## Handling

Format: Liquid

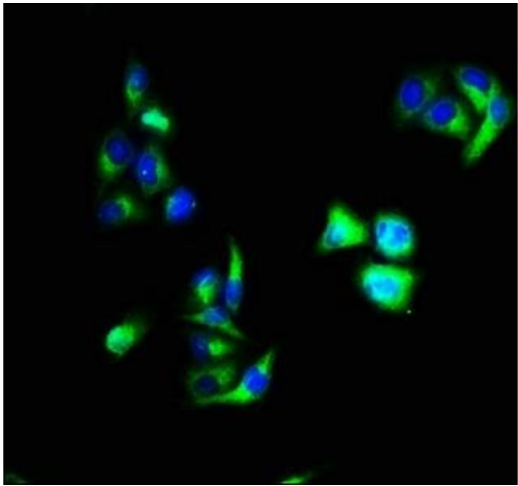
Buffer: Preservative: 0.03 % Proclin 300  
Constituents: 50 % Glycerol, 0.01M PBS, PH 7.4

Preservative: ProClin

Precaution of Use: This product contains ProClin: a POISONOUS AND HAZARDOUS SUBSTANCE which should be handled by trained staff only.

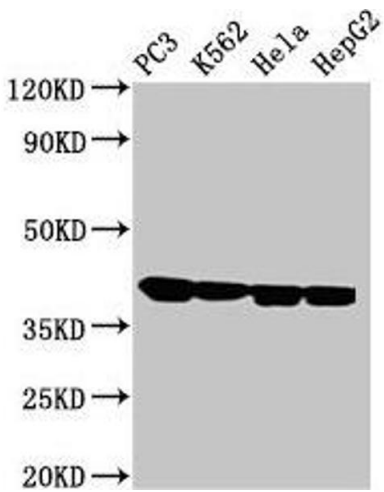
Storage: -20 °C,-80 °C

Storage Comment: Upon receipt, store at -20°C or -80°C. Avoid repeated freeze.



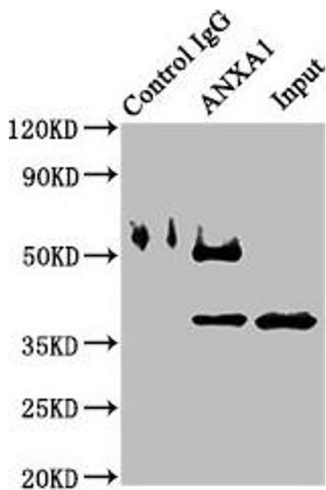
### Immunofluorescence

**Image 1.** Immunofluorescence staining of HeLa cells with ABIN7144255 at 1:66, counter-stained with DAPI. The cells were fixed in 4% formaldehyde, permeabilized using 0.2% Triton X-100 and blocked in 10% normal Goat Serum. The cells were then incubated with the antibody overnight at 4°C. The secondary antibody was Alexa Fluor 488-conjugated AffiniPure Goat Anti-Rabbit IgG(H+L).



### Western Blotting

**Image 2.** Western Blot Positive WB detected in: PC-3 whole cell lysate, K562 whole cell lysate, HeLa whole cell lysate, HepG2 whole cell lysate All lanes: ANXA1 antibody at 2 µg/mL Secondary Goat polyclonal to rabbit IgG at 1/50000 dilution Predicted band size: 39 kDa Observed band size: 39 kDa



### Western Blotting

**Image 3.** Immunoprecipitating ANXA1 in K562 whole cell lysate Lane 1: Rabbit control IgG instead of ABIN7144255 in K562 whole cell lysate. For western blotting, a HRP-conjugated Protein G antibody was used as the secondary antibody (1/2000) Lane 2: ABIN7144255 (8 µg) + K562 whole cell lysate (500 µg) Lane 3: K562 whole cell lysate (10 µg)