



[Go to Product page](#)

Datasheet for ABIN7144337

anti-SERPINC1 antibody (AA 37-180)

3 Images

Overview

Quantity:	100 µg
Target:	SERPINC1
Binding Specificity:	AA 37-180
Reactivity:	Human
Host:	Rabbit
Clonality:	Polyclonal
Conjugate:	This SERPINC1 antibody is un-conjugated
Application:	Western Blotting (WB), Immunohistochemistry (IHC), ELISA

Product Details

Immunogen:	Recombinant Human Antithrombin-III protein (37-180AA)
Isotype:	IgG
Cross-Reactivity:	Human, Rat
Purification:	>95%, Protein G purified

Target Details

Target:	SERPINC1
Alternative Name:	SERPINC1 (SERPINC1 Products)
Background:	Background: Most important serine protease inhibitor in plasma that regulates the blood coagulation cascade. AT-III inhibits thrombin, matrilysin-3/TMPRSS7, as well as factors IXa, Xa

Target Details

and XIa. Its inhibitory activity is greatly enhanced in the presence of heparin.

Aliases: ANT3_HUMAN antibody, Antithrombin antibody, Antithrombin III antibody, Antithrombin-III antibody, AntithrombinIII antibody, AT 3 antibody, AT III antibody, AT3 antibody, AT3D antibody, ATIII antibody, Heparin cofactor I antibody, MGC22579 antibody, Serine (or cysteine) proteinase inhibitor clade C (antithrombin) member 1 antibody, Serine cysteine proteinase inhibitor clade C member 1 antibody, Serine proteinase inhibitor clade C member 1 antibody, Serpin C1 antibody, Serpin family C member 1 antibody, Serpin peptidase inhibitor clade C (antithrombin) member 1 antibody, SERPINC1 antibody, THPH7 antibody

UniProt: [P01008](#)

Application Details

Application Notes: Recommended dilution: WB:1:200-1:3000, IHC:1:20-1:200,

Restrictions: For Research Use only

Handling

Format: Liquid

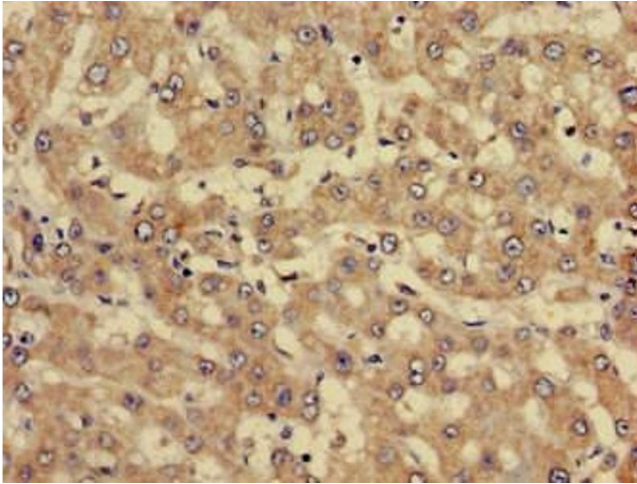
Buffer: Preservative: 0.03 % Proclin 300
Constituents: 50 % Glycerol, 0.01M PBS, pH 7.4

Preservative: ProClin

Precaution of Use: This product contains ProClin: a POISONOUS AND HAZARDOUS SUBSTANCE which should be handled by trained staff only.

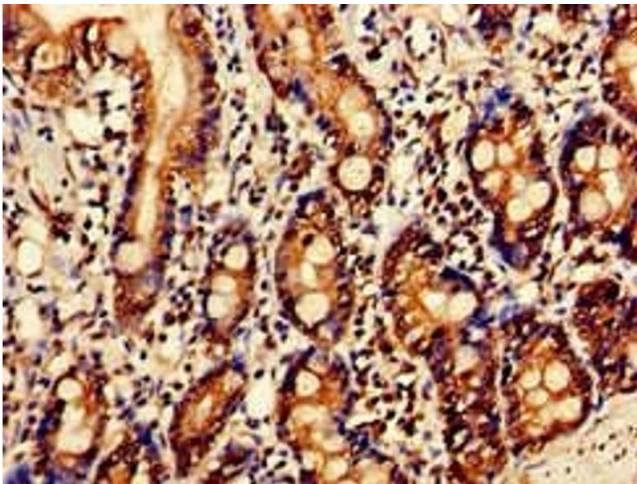
Storage: -20 °C,-80 °C

Storage Comment: Upon receipt, store at -20°C or -80°C. Avoid repeated freeze.



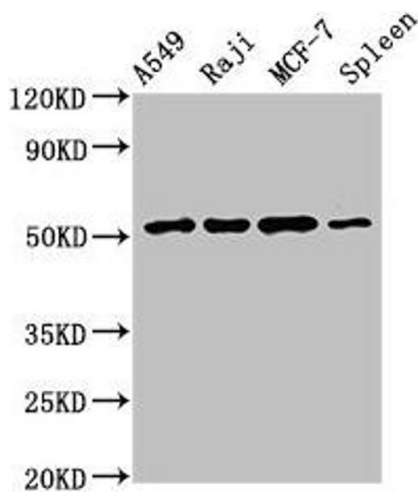
Immunohistochemistry

Image 1. Immunohistochemistry of paraffin-embedded human liver cancer using ABIN7144337 at dilution of 1:100



Immunohistochemistry

Image 2. Immunohistochemistry of paraffin-embedded human small intestine tissue using ABIN7144337 at dilution of 1:100



Western Blotting

Image 3. Western Blot Positive WB detected in: A549 whole cell lysate, Raji whole cell lysate, MCF-7 whole cell lysate, Rat spleen tissue All lanes: SERPINC1 antibody at 2.5 µg/mL Secondary Goat polyclonal to rabbit IgG at 1/50000 dilution Predicted band size: 53 kDa Observed band size: 53 kDa