

Datasheet for ABIN7144390
anti-AAK1 antibody (AA 274-465)

3 Images

[Go to Product page](#)

Overview

Quantity:	100 µg
Target:	AAK1
Binding Specificity:	AA 274-465
Reactivity:	Human
Host:	Rabbit
Clonality:	Polyclonal
Conjugate:	This AAK1 antibody is un-conjugated
Application:	Western Blotting (WB), ELISA, Immunohistochemistry (IHC), Immunofluorescence (IF)

Product Details

Immunogen:	Recombinant Human AP2-associated protein kinase 1 protein (274-465AA)
Isotype:	IgG
Cross-Reactivity:	Human, Mouse
Purification:	>95%, Protein G purified

Target Details

Target:	AAK1
Alternative Name:	AAK1 (AAK1 Products)
Background:	Background: Regulates clathrin-mediated endocytosis by phosphorylating the AP2M1/mu2 subunit of the adaptor protein complex 2 (AP-2) which ensures high affinity binding of AP-2 to

Target Details

cargo membrane proteins during the initial stages of endocytosis. Isoform 1 and isoform 2 display similar levels of kinase activity towards AP2M1. Regulates phosphorylation of other AP-2 subunits as well as AP-2 localization and AP-2-mediated internalization of ligand complexes. Phosphorylates NUMB and regulates its cellular localization, promoting NUMB localization to endosomes. Binds to and stabilizes the activated form of NOTCH1, increases its localization in endosomes and regulates its transcriptional activity.

Aliases: AAK 1 antibody, Aak1 antibody, AAK1_HUMAN antibody, Adaptor associated kinase 1 antibody, Adaptor-associated kinase 1 antibody, AP2 associated kinase 1 antibody, AP2 associated protein kinase 1 antibody, AP2-associated protein kinase 1 antibody, DKFZp686F03202 antibody, DKFZp686K16132 antibody, FLJ23712 antibody, FLJ25931 antibody, FLJ31060 antibody, FLJ42882 antibody, FLJ45252 antibody, KIAA1048 antibody, MGC138170 antibody, MGC164568 antibody, MGC164570 antibody

UniProt: [Q2M2I8](#)

Application Details

Application Notes: Recommended dilution: WB:1:500-1:5000, IHC:1:20-1:200, IF:1:50-1:200,

Restrictions: For Research Use only

Handling

Format: Liquid

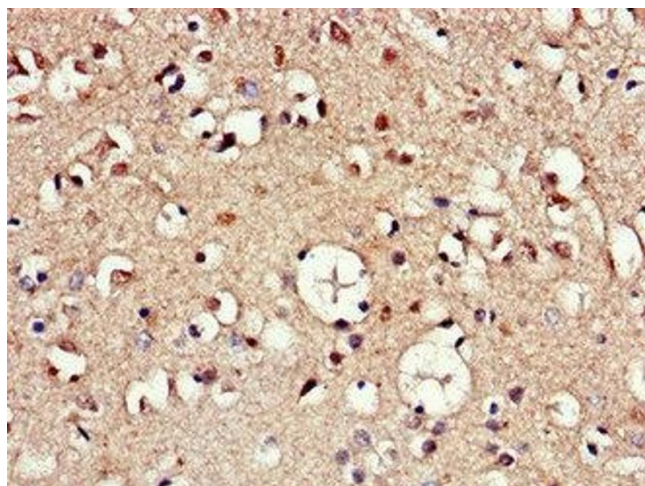
Buffer: Preservative: 0.03 % Proclin 300
Constituents: 50 % Glycerol, 0.01M PBS, PH 7.4

Preservative: ProClin

Precaution of Use: This product contains ProClin: a POISONOUS AND HAZARDOUS SUBSTANCE which should be handled by trained staff only.

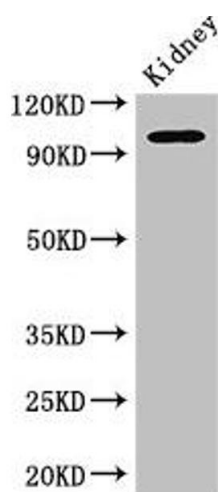
Storage: -20 °C, -80 °C

Storage Comment: Upon receipt, store at -20°C or -80°C. Avoid repeated freeze.



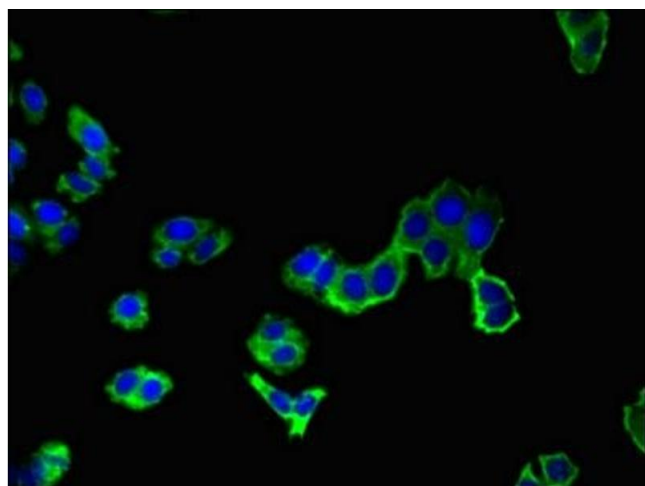
Immunohistochemistry

Image 1. Immunohistochemistry of paraffin-embedded human brain tissue using ABIN7144390 at dilution of 1:100



Western Blotting

Image 2. Western Blot Positive WB detected in: Mouse kidney tissue All lanes: AAK1 antibody at 2.5 µg/mL Secondary Goat polyclonal to rabbit IgG at 1/50000 dilution Predicted band size: 104, 94 kDa Observed band size: 104 kDa



Immunofluorescence

Image 3. Immunofluorescent analysis of HepG2 cells using ABIN7144390 at dilution of 1:100 and Alexa Fluor 488-conjugated AffiniPure Goat Anti-Rabbit IgG(H+L)