

Datasheet for ABIN7144446  
**anti-APOPT1 antibody (AA 40-150)**



[Go to Product page](#)

1 Image

## Overview

Quantity:	100 µg
Target:	APOPT1
Binding Specificity:	AA 40-150
Reactivity:	Human
Host:	Rabbit
Clonality:	Polyclonal
Conjugate:	This APOPT1 antibody is un-conjugated
Application:	ELISA, Western Blotting (WB)

## Product Details

Immunogen:	Recombinant Human Apoptogenic protein 1, mitochondrial protein (40-150AA)
Isotype:	IgG
Cross-Reactivity:	Human, Mouse
Purification:	>95%, Protein G purified

## Target Details

Target:	APOPT1
Alternative Name:	APOPT1 ( <a href="#">APOPT1 Products</a> )
Background:	Background: Plays a role in the regulation of apoptosis. Mediates mitochondria-induced cell death in vascular smooth muscle cells through the release of cytochrome c from mitochondria,

## Target Details

---

followed by the activation of the caspase cascade.

Aliases: APOP-1 antibody, APOP1 antibody, APOP1\_HUMAN antibody, Apopt1 antibody, Apoptogenic 1 mitochondrial antibody, Apoptogenic protein 1 antibody, Apoptogenic protein 1 mitochondrial antibody, C14orf153 antibody, mitochondrial antibody, UPF0671 protein C14orf153 antibody

---

UniProt: [Q96IL0](#)

---

Pathways: [Positive Regulation of Endopeptidase Activity](#)

## Application Details

---

Application Notes: Recommended dilution: WB:1:500-1:5000,

---

Restrictions: For Research Use only

## Handling

---

Format: Liquid

---

Buffer: Preservative: 0.03 % Proclin 300  
Constituents: 50 % Glycerol, 0.01M PBS, pH 7.4

---

Preservative: ProClin

---

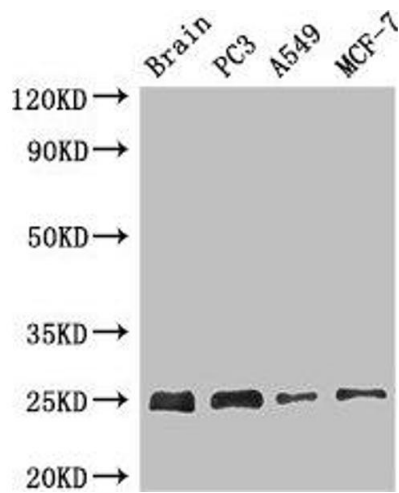
Precaution of Use: This product contains ProClin: a POISONOUS AND HAZARDOUS SUBSTANCE which should be handled by trained staff only.

---

Storage: -20 °C,-80 °C

---

Storage Comment: Upon receipt, store at -20°C or -80°C. Avoid repeated freeze.



#### Western Blotting

**Image 1.** Western Blot Positive WB detected in: Mouse brain tissue, PC-3 whole cell lysate, A549 whole cell lysate, MCF-7 whole cell lysate All lanes: APOPT1 antibody at 2.7 µg/mL Secondary Goat polyclonal to rabbit IgG at 1/50000 dilution predicted band size: 25 kDa observed band size: 25 kDa