

Datasheet for ABIN7144499

anti-Aquaporin 1 antibody (AA 220-269)**3** Images[Go to Product page](#)

Overview

Quantity:	100 µg
Target:	Aquaporin 1 (AQP1)
Binding Specificity:	AA 220-269
Reactivity:	Human
Host:	Rabbit
Clonality:	Polyclonal
Conjugate:	This Aquaporin 1 antibody is un-conjugated
Application:	Western Blotting (WB), ELISA, Immunofluorescence (IF), Immunoprecipitation (IP)

Product Details

Immunogen:	Recombinant Human Aquaporin-1 protein (220-269AA)
Isotype:	IgG
Cross-Reactivity:	Human, Mouse, Rat
Purification:	>95%, Protein G purified

Target Details

Target:	Aquaporin 1 (AQP1)
Alternative Name:	AQP1 (AQP1 Products)
Background:	Background: Forms a water-specific channel that provides the plasma membranes of red cells and kidney proximal tubules with high permeability to water, thereby permitting water to move

Target Details

in the direction of an osmotic gradient.

Aliases: AQP 1 antibody, AQP CHIP antibody, AQP-1 antibody, AQP1 antibody, AQP1_HUMAN antibody, aquaporin 1 (channel-forming integral protein, 28 kDa, CO blood group) antibody, aquaporin 1 (Colton blood group) antibody, Aquaporin CHIP antibody, Aquaporin-1 antibody, Aquaporin-CHIP antibody, Aquaporin1 antibody, Channel forming integral protein 28 kDa antibody, Channel like integral membrane protein 28 kDa antibody, CHIP 28 antibody, CHIP28 antibody, CO antibody, Colton blood group antibody, Growth factor induced delayed early response protein antibody, MGC26324 antibody, Urine water channel antibody, Water channel protein CHIP 29 antibody, Water channel protein CHIP29 antibody, Water channel protein for red blood cells and kidney proximal tubule antibody

UniProt: [P29972](#)

Pathways: [Hormone Transport](#)

Application Details

Application Notes: Recommended dilution: WB:1:1000-1:5000, IF:1:50-1:200, IP:1:200-1:2000,

Restrictions: For Research Use only

Handling

Format: Liquid

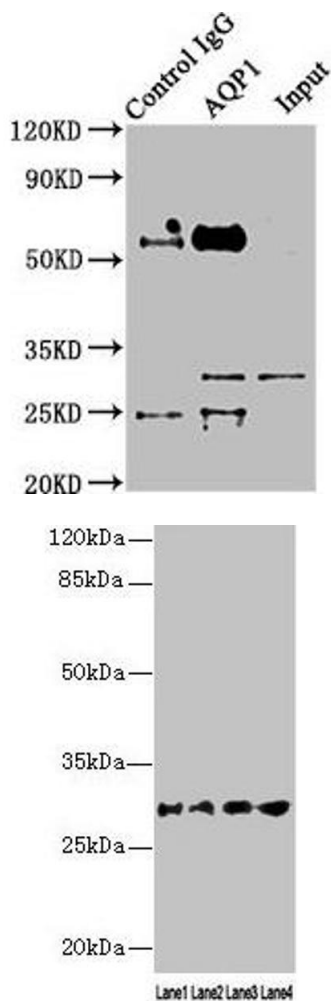
Buffer: Preservative: 0.03 % Proclin 300
Constituents: 50 % Glycerol, 0.01M PBS, PH 7.4

Preservative: ProClin

Precaution of Use: This product contains ProClin: a POISONOUS AND HAZARDOUS SUBSTANCE which should be handled by trained staff only.

Storage: -20 °C,-80 °C

Storage Comment: Upon receipt, store at -20°C or -80°C. Avoid repeated freeze.

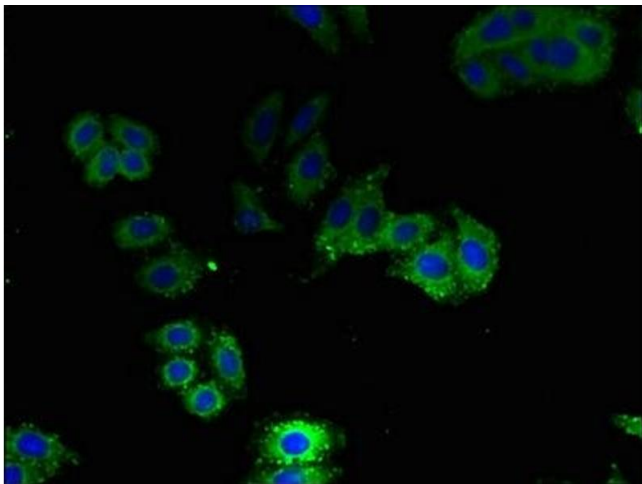


Western Blotting

Image 1. Immunoprecipitating AQP1 in Mouse skeletal muscle tissue Lane 1: Rabbit control IgG instead of ABIN7144499 in Mouse skeletal muscle tissue. For western blotting, a HRP-conjugated Protein G antibody was used as the secondary antibody (1/2000) Lane 2: ABIN7144499 (8 μ g) + Mouse skeletal muscle tissue (500 μ g) Lane 3: Mouse skeletal muscle tissue (10 μ g)

Western Blotting

Image 2. Western blot All lanes: AQP1 antibody at 16 μ g/mL Lane 1: Rat heart tissue Lane 2: Mouse skeletal muscle tissue Lane 3: A549 whole cell lysate Lane 4: 293T whole cell lysate Secondary Goat polyclonal to rabbit IgG at 1/10000 dilution Predicted band size: 29, 20, 24, 17 kDa Observed band size: 29 kDa



Immunofluorescence

Image 3. Immunofluorescent analysis of HepG2 cells using ABIN7144499 at dilution of 1:100 and Alexa Fluor 488-conjugated AffiniPure Goat Anti-Rabbit IgG(H+L)