



Datasheet for ABIN7144546
anti-GIT1 antibody (AA 470-642)



[Go to Product page](#)

4 Images

Overview

Quantity:	100 µg
Target:	GIT1
Binding Specificity:	AA 470-642
Reactivity:	Human
Host:	Rabbit
Clonality:	Polyclonal
Conjugate:	This GIT1 antibody is un-conjugated
Application:	Western Blotting (WB), ELISA, Immunohistochemistry (IHC), Immunofluorescence (IF)

Product Details

Immunogen:	Recombinant Human ARF GTPase-activating protein GIT1 protein (470-642AA)
Isotype:	IgG
Cross-Reactivity:	Human, Mouse
Purification:	>95%, Protein G purified

Target Details

Target:	GIT1
Alternative Name:	GIT1 (GIT1 Products)
Background:	Background: GTPase-activating protein for the ADP ribosylation factor family. May serve as a scaffold to bring together molecules to form signaling modules controlling vesicle trafficking,

Target Details

adhesion and cytoskeletal organization. Increases the speed of cell migration, as well as the size and rate of formation of protrusions, possibly by targeting PAK1 to adhesions and the leading edge of lamellipodia. Sequesters inactive non-tyrosine-phosphorylated paxillin in cytoplasmic complexes. Involved in the regulation of cytokinesis, the function may involve SDCCAG3 and PTPN13 (By similarity).

Aliases: ARF GAP GIT1 antibody, ARF GTPase activating protein GIT1 antibody, ARF GTPase-activating protein GIT1 antibody, CAT 1 antibody, CAT-1 antibody, CaT1 antibody, Cool associated and tyrosine phosphorylated protein 1 antibody, Cool-associated and tyrosine-phosphorylated protein 1 antibody, G protein coupled receptor kinase interacting ArfGAP 1 antibody, G protein coupled receptor kinase interactor 1 antibody, G protein-coupled receptor kinase-interactor 1 antibody, GIT1 antibody, GIT1_HUMAN antibody, GRK interacting protein 1 antibody, GRK-interacting protein 1 antibody

UniProt: [Q9Y2X7](#)

Application Details

Application Notes: Recommended dilution: WB:1:500-1:5000, IHC:1:20-1:200, IF:1:50-1:200,

Restrictions: For Research Use only

Handling

Format: Liquid

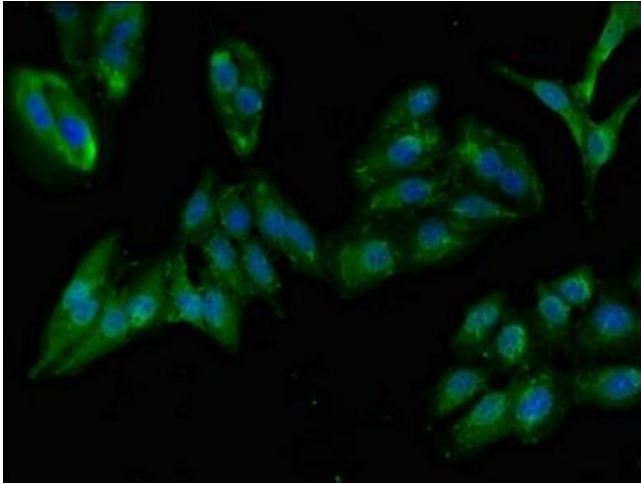
Buffer: Preservative: 0.03 % Proclin 300
Constituents: 50 % Glycerol, 0.01M PBS, pH 7.4

Preservative: ProClin

Precaution of Use: This product contains ProClin: a POISONOUS AND HAZARDOUS SUBSTANCE which should be handled by trained staff only.

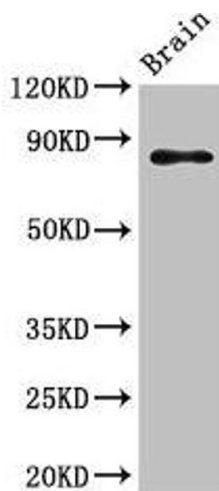
Storage: -20 °C,-80 °C

Storage Comment: Upon receipt, store at -20°C or -80°C. Avoid repeated freeze.



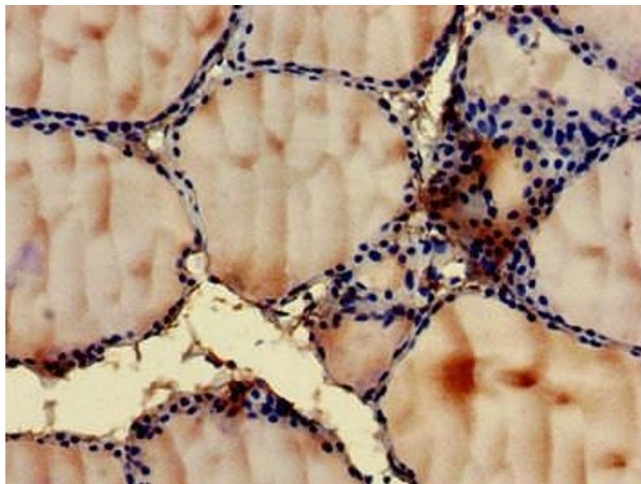
Immunofluorescence

Image 1. Immunofluorescent analysis of HeLa cells using ABIN7144546 at dilution of 1:100 and Alexa Fluor 488-conjugated AffiniPure Goat Anti-Rabbit IgG(H+L)



Western Blotting

Image 2. Western Blot Positive WB detected in: Mouse brain tissue All lanes: GIT1 antibody at 3.5 µg/mL Secondary Goat polyclonal to rabbit IgG at 1/50000 dilution Predicted band size: 85, 20, 86 kDa Observed band size: 85 kDa



Immunohistochemistry

Image 3. Immunohistochemistry of paraffin-embedded human thyroid tissue using ABIN7144546 at dilution of 1:100

Please check the [product details page](#) for more images. Overall 4 images are available for ABIN7144546.