

Datasheet for ABIN7144595
anti-ASL antibody (AA 2-300)[Go to Product page](#)

3 Images

Overview

Quantity:	100 µg
Target:	ASL
Binding Specificity:	AA 2-300
Reactivity:	Human
Host:	Rabbit
Clonality:	Polyclonal
Conjugate:	This ASL antibody is un-conjugated
Application:	ELISA, Immunohistochemistry (IHC), Immunofluorescence (IF)

Product Details

Immunogen:	Recombinant Human Argininosuccinate lyase protein (2-300AA)
Isotype:	IgG
Cross-Reactivity:	Human
Purification:	>95%, Protein G purified

Target Details

Target:	ASL
Alternative Name:	ASL (ASL Products)
Background:	Background: cytoplasm, cytosol, extracellular exosome, argininosuccinate lyase activity, arginine biosynthetic process, arginine catabolic process, cellular nitrogen compound

Target Details

metabolic process, internal protein amino acid acetylation, polyamine metabolic process, protein tetramerization

Aliases: Argininosuccinase antibody, Argininosuccinate lyase antibody, Argininosuccinase antibody, ARLY_HUMAN antibody, ASAL antibody, ASL antibody, EC 4.3.2.1 antibody

UniProt: [P04424](#)

Pathways: [Response to Growth Hormone Stimulus](#)

Application Details

Application Notes: Recommended dilution: IHC:1:20-1:200, IF:1:50-1:200,

Restrictions: For Research Use only

Handling

Format: Liquid

Buffer: Preservative: 0.03 % Proclin 300
Constituents: 50 % Glycerol, 0.01M PBS, PH 7.4

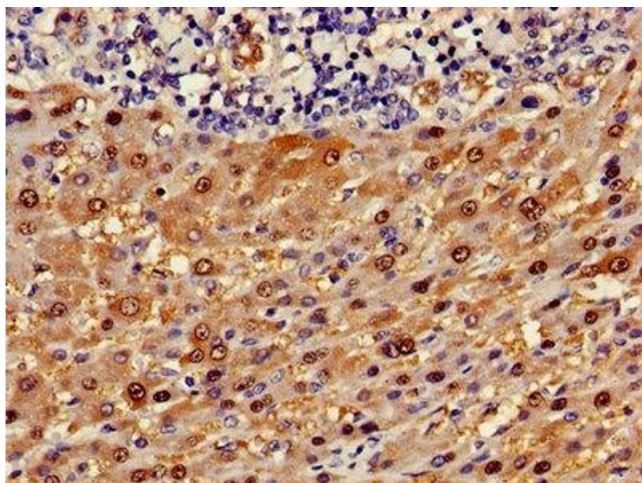
Preservative: ProClin

Precaution of Use: This product contains ProClin: a POISONOUS AND HAZARDOUS SUBSTANCE which should be handled by trained staff only.

Storage: -20 °C,-80 °C

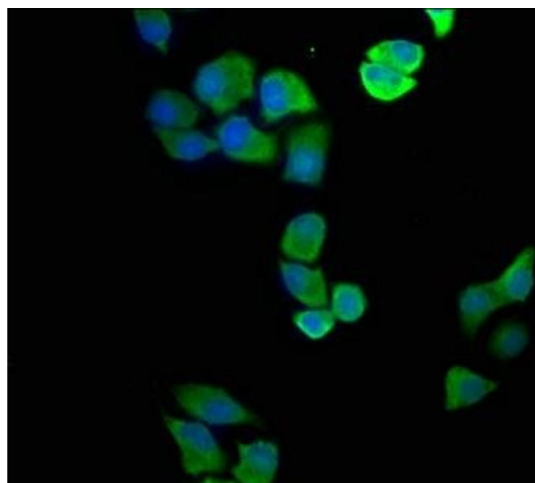
Storage Comment: Upon receipt, store at -20°C or -80°C. Avoid repeated freeze.

Images



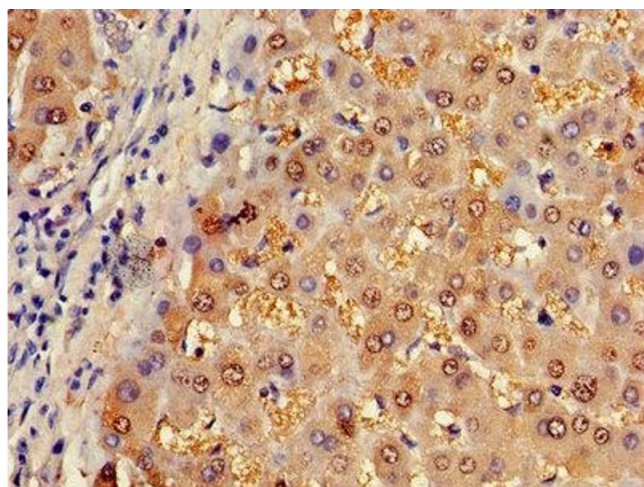
Immunohistochemistry

Image 1. Immunohistochemistry of paraffin-embedded human liver cancer using ABIN7144595 at dilution of 1:100



Immunofluorescence

Image 2. Immunofluorescence staining of HeLa cells with ABIN7144595 at 1:100, counter-stained with DAPI. The cells were fixed in 4% formaldehyde, permeabilized using 0.2% Triton X-100 and blocked in 10% normal Goat Serum. The cells were then incubated with the antibody overnight at 4°C. The secondary antibody was Alexa Fluor 488-conjugated AffiniPure Goat Anti-Rabbit IgG(H+L).



Immunohistochemistry

Image 3. Immunohistochemistry of paraffin-embedded human liver tissue using ABIN7144595 at dilution of 1:100