

Datasheet for ABIN7144607
anti-ARMC1 antibody (AA 28-160)

2 Images

[Go to Product page](#)

Overview

Quantity:	100 µg
Target:	ARMC1
Binding Specificity:	AA 28-160
Reactivity:	Human
Host:	Rabbit
Clonality:	Polyclonal
Conjugate:	This ARMC1 antibody is un-conjugated
Application:	ELISA, Immunohistochemistry (IHC), Immunofluorescence (IF)

Product Details

Immunogen:	Recombinant Human Armadillo repeat-containing protein 10 protein (28-160AA)
Isotype:	IgG
Cross-Reactivity:	Human
Purification:	>95%, Protein G purified

Target Details

Target:	ARMC1
Alternative Name:	ARMC1 (ARMC1 Products)
Background:	Background: May play a role in cell survival and cell growth. May suppress the transcriptional activity of p53/TP53.

Target Details

Aliases: ARM10_HUMAN antibody, Armadillo repeat containing 10 antibody, Armadillo repeat containing protein 10 antibody, Armadillo repeat-containing protein 10 antibody, ARMC 10 antibody, ARMC10 antibody, FLJ37850 antibody, MGC3195 antibody, PNAS112 antibody, Specific splicing variant involved in hepatocarcinogenesis antibody, Splicing variant involved in hepatocarcinogenesis protein antibody, SVH antibody

UniProt: [Q8N2F6](#)

Application Details

Application Notes: Recommended dilution: IHC:1:20-1:200, IF:1:50-1:200,

Restrictions: For Research Use only

Handling

Format: Liquid

Buffer: Preservative: 0.03 % Proclin 300
Constituents: 50 % Glycerol, 0.01M PBS, PH 7.4

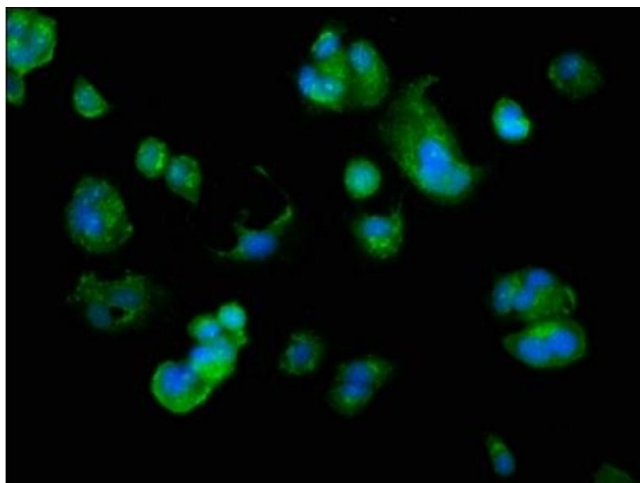
Preservative: ProClin

Precaution of Use: This product contains ProClin: a POISONOUS AND HAZARDOUS SUBSTANCE which should be handled by trained staff only.

Storage: -20 °C,-80 °C

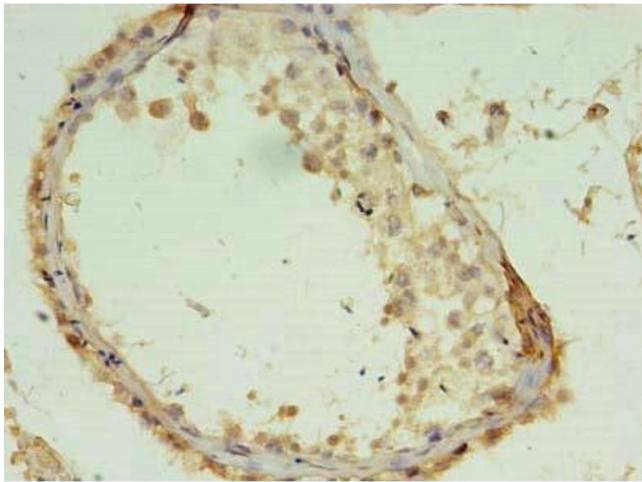
Storage Comment: Upon receipt, store at -20°C or -80°C. Avoid repeated freeze.

Images



Immunofluorescence

Image 1. Immunofluorescence staining of MCF-7 cells with ABIN7144607 at 1:166, counter-stained with DAPI. The cells were fixed in 4% formaldehyde, permeabilized using 0.2% Triton X-100 and blocked in 10% normal Goat Serum. The cells were then incubated with the antibody overnight at 4°C. The secondary antibody was Alexa Fluor 488-conjugated AffiniPure Goat Anti-Rabbit IgG(H+L).



Immunohistochemistry

Image 2. Immunohistochemistry of paraffin-embedded human testis tissue using ABIN7144607 at dilution of 1:100