



[Go to Product page](#)

Datasheet for ABIN7144619

## anti-ARMCX1 antibody (AA 29-300)

### 1 Image

#### Overview

Quantity:	100 µg
Target:	ARMCX1
Binding Specificity:	AA 29-300
Reactivity:	Human
Host:	Rabbit
Clonality:	Polyclonal
Conjugate:	This ARM CX1 antibody is un-conjugated
Application:	ELISA, Immunohistochemistry (IHC)

#### Product Details

Immunogen:	Recombinant Human Armadillo repeat-containing X-linked protein 1 protein (29-300AA)
Isotype:	IgG
Cross-Reactivity:	Human
Purification:	>95%, Protein G purified

#### Target Details

Target:	ARMCX1
Alternative Name:	ARMCX1 ( <a href="#">ARMCX1 Products</a> )
Background:	ARMCX 1 antibody, AD032 antibody, ALEX1 antibody, ARM protein lost in epithelial cancers on chromosome X 1 antibody, Arm protein lost in epithelial cancers X chromosome 1 antibody,

## Target Details

Armadillo repeat containing X linked 1 antibody, Armadillo repeat containing X linked protein 1 antibody, Armadillo repeat-containing X-linked protein 1 antibody, ARMCX1 antibody, ARMX1\_HUMAN antibody, Protein ALEX1 antibody

UniProt: [Q9P291](#)

## Application Details

Application Notes: Recommended dilution: IHC:1:20-1:200,

Restrictions: For Research Use only

## Handling

Format: Liquid

Buffer: Preservative: 0.03 % Proclin 300  
Constituents: 50 % Glycerol, 0.01M PBS, PH 7.4

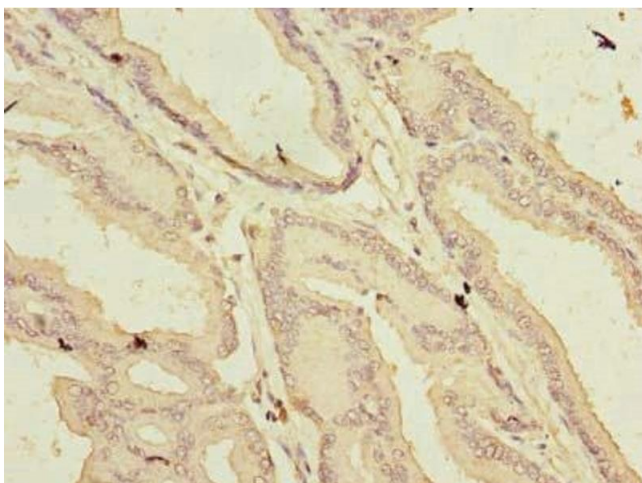
Preservative: ProClin

Precaution of Use: This product contains ProClin: a POISONOUS AND HAZARDOUS SUBSTANCE which should be handled by trained staff only.

Storage: -20 °C,-80 °C

Storage Comment: Upon receipt, store at -20°C or -80°C. Avoid repeated freeze.

## Images



### Immunohistochemistry

**Image 1.** Immunohistochemistry of paraffin-embedded human prostate cancer using ABIN7144619 at dilution of 1:100