



[Go to Product page](#)

Datasheet for ABIN7144631  
**anti-ARPIN antibody (AA 1-226)**

3 Images

### Overview

Quantity:	100 µg
Target:	ARPIN
Binding Specificity:	AA 1-226
Reactivity:	Human
Host:	Rabbit
Clonality:	Polyclonal
Conjugate:	This ARPIN antibody is un-conjugated
Application:	ELISA, Western Blotting (WB), Immunohistochemistry (IHC)

### Product Details

Immunogen:	Recombinant Human Arpin protein (1-226AA)
Isotype:	IgG
Cross-Reactivity:	Human
Purification:	Antigen Affinity Purified

### Target Details

Target:	ARPIN
Abstract:	<a href="#">ARPIN Products</a>
Background:	Background: Regulates actin polymerization by inhibiting the actin-nucleating activity of the Arp2/3 complex, the function is competitive with nucleation promoting factors. Participates in

## Target Details

---

an incoherent feedforward loop at the lamellipodium tip where it inhibits the ARP2/2 complex in response to Rac signaling and where Rac also stimulates actin polymerization through the WAVE complex. Involved in steering cell migration by controlling its directional persistence.

Aliases: 2610034B18Rik antibody, Actin related protein 2/3 complex inhibitor antibody, Arp2/3 inhibition protein antibody, ARPIN antibody, C15orf38 antibody, Chromosome 15 open reading frame 38 antibody, CO038\_HUMAN antibody, Hypothetical protein LOC348110 antibody, MGC61550 antibody, RIKEN cDNA 2610034B18 antibody, UPF0552 protein C15orf38 antibody

---

UniProt: [Q7Z6K5](#)

## Application Details

---

Application Notes: Recommended dilution: WB:1:1000-1:5000, IHC:1:20-1:200,

Restrictions: For Research Use only

## Handling

---

Format: Liquid

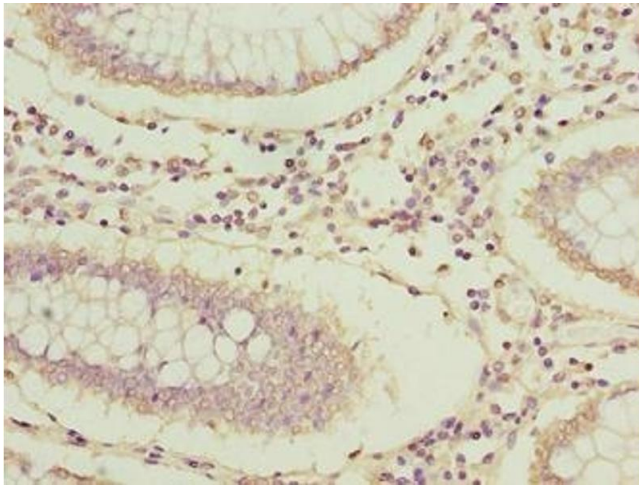
Buffer: Preservative: 0.03 % Proclin 300  
Constituents: 50 % Glycerol, 0.01M PBS, PH 7.4

Preservative: ProClin

Precaution of Use: This product contains ProClin: a POISONOUS AND HAZARDOUS SUBSTANCE which should be handled by trained staff only.

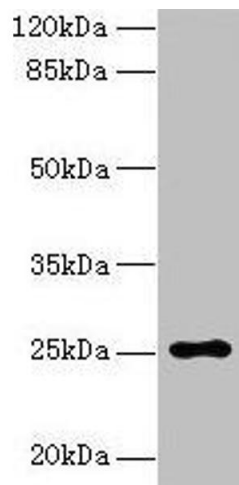
Storage: -20 °C,-80 °C

Storage Comment: Upon receipt, store at -20°C or -80°C. Avoid repeated freeze.



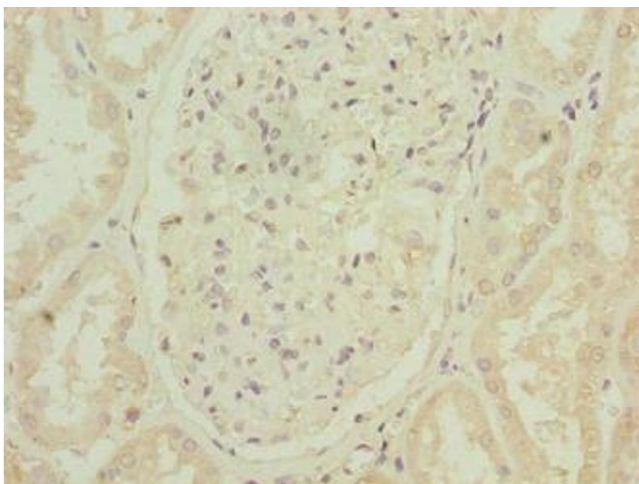
### Immunohistochemistry

**Image 1.** Immunohistochemistry of paraffin-embedded human colon cancer using ABIN7144631 at dilution of 1:100



### Western Blotting

**Image 2.** Western blot All lanes: ARPIN antibody at 0.5  $\mu$ g/mL + HepG2 whole cell lysate Secondary Goat polyclonal to rabbit IgG at 1/10000 dilution Predicted band size: 25, 44 kDa Observed band size: 25 kDa



### Immunohistochemistry

**Image 3.** Immunohistochemistry of paraffin-embedded human kidney tissue using ABIN7144631 at dilution of 1:100