

Datasheet for ABIN7144635
anti-ARRDC1 antibody (AA 288-433)[Go to Product page](#)

3 Images

Overview

Quantity:	100 µg
Target:	ARRDC1
Binding Specificity:	AA 288-433
Reactivity:	Human
Host:	Rabbit
Clonality:	Polyclonal
Conjugate:	This ARRDC1 antibody is un-conjugated
Application:	ELISA, Immunofluorescence (IF), Immunohistochemistry (IHC)

Product Details

Immunogen:	Recombinant Human Arrestin domain-containing protein 1 protein (288-433AA)
Isotype:	IgG
Cross-Reactivity:	Human
Purification:	>95%, Protein G purified

Target Details

Target:	ARRDC1
Alternative Name:	ARRDC1 (ARRDC1 Products)
Background:	Background: cytoplasmic vesicle, extracellular exosome, plasma membrane Aliases: ARRD1_HUMAN antibody, ARRDC 1 antibody, ARRDC1 antibody, Arrestin domain

Target Details

containing 1 antibody, Arrestin domain containing protein 1 antibody, Arrestin domain-containing protein 1 antibody, MGC40555 antibody, OTTHUMP00000022707 antibody, OTTHUMP00000022709 antibody, RP11-48C7.5 antibody

UniProt: [Q8N5I2](#)

Application Details

Application Notes: Recommended dilution: IHC:1:200-1:500, IF:1:50-1:200,

Restrictions: For Research Use only

Handling

Format: Liquid

Buffer: Preservative: 0.03 % Proclin 300
Constituents: 50 % Glycerol, 0.01M PBS, pH 7.4

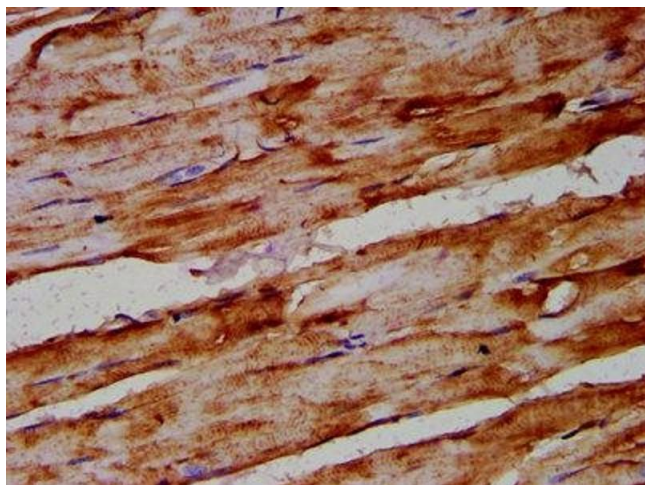
Preservative: ProClin

Precaution of Use: This product contains ProClin: a POISONOUS AND HAZARDOUS SUBSTANCE which should be handled by trained staff only.

Storage: -20 °C,-80 °C

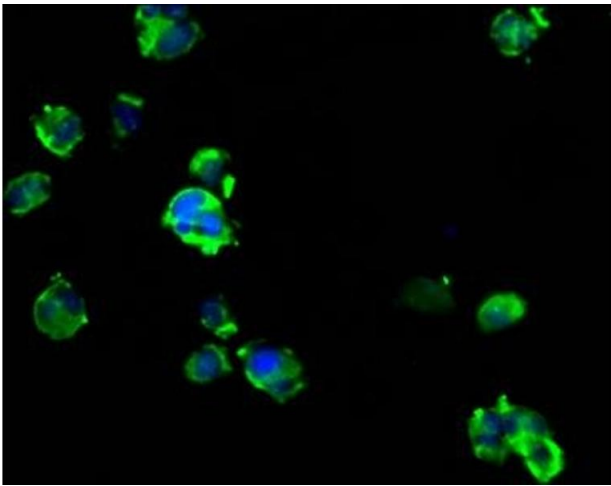
Storage Comment: Upon receipt, store at -20°C or -80°C. Avoid repeated freeze.

Images



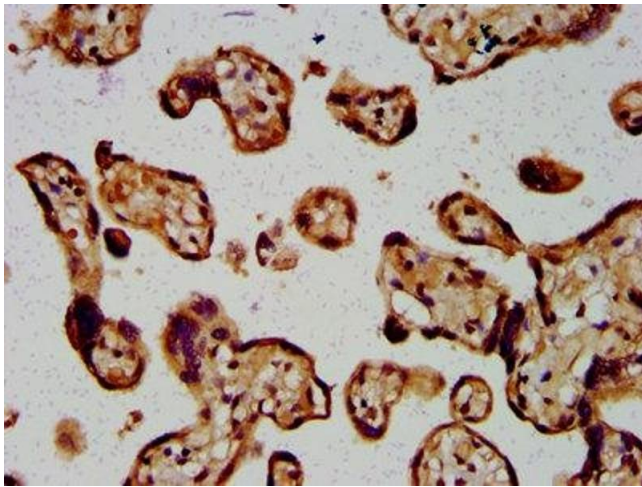
Immunohistochemistry

Image 1. IHC image of ABIN7144635 diluted at 1:400 and staining in paraffin-embedded human skeletal muscle tissue performed on a Leica Bond™ system. After dewaxing and hydration, antigen retrieval was mediated by high pressure in a citrate buffer (pH 6.0). Section was blocked with 10% normal goat serum 30min at RT. Then primary antibody (1% BSA) was incubated at 4°C overnight. The primary is detected by a biotinylated secondary antibody and visualized using an HRP conjugated SP system.



Immunofluorescence

Image 2. Immunofluorescence staining of MCF-7 cells with ABIN7144635 at 1:133, counter-stained with DAPI. The cells were fixed in 4% formaldehyde, permeabilized using 0.2% Triton X-100 and blocked in 10% normal Goat Serum. The cells were then incubated with the antibody overnight at 4°C. The secondary antibody was Alexa Fluor 488-conjugated AffiniPure Goat Anti-Rabbit IgG(H+L).



Immunohistochemistry

Image 3. IHC image of ABIN7144635 diluted at 1:400 and staining in paraffin-embedded human placenta tissue performed on a Leica Bond™ system. After dewaxing and hydration, antigen retrieval was mediated by high pressure in a citrate buffer (pH 6.0). Section was blocked with 10% normal goat serum 30min at RT. Then primary antibody (1% BSA) was incubated at 4°C overnight. The primary is detected by a biotinylated secondary antibody and visualized using an HRP conjugated SP system.