



[Go to Product page](#)

Datasheet for ABIN7144671

anti-AADACL2 antibody (AA 203-401)

1 Image

Overview

Quantity:	100 µg
Target:	AADACL2
Binding Specificity:	AA 203-401
Reactivity:	Human
Host:	Rabbit
Clonality:	Polyclonal
Conjugate:	This AADACL2 antibody is un-conjugated
Application:	ELISA, Western Blotting (WB)

Product Details

Immunogen:	Recombinant Human Arylacetamide deacetylase-like 2 protein (203-401AA)
Isotype:	IgG
Cross-Reactivity:	Human
Purification:	>95%, Protein G purified

Target Details

Target:	AADACL2
Alternative Name:	AADACL2 (AADACL2 Products)
Background:	AADACL2Arylacetamide deacetylase-like 2 antibody, EC 3.1.1.- antibody
UniProt:	Q6P093

Application Details

Application Notes: Recommended dilution: WB:1:1000-1:5000,

Restrictions: For Research Use only

Handling

Format: Liquid

Buffer: Preservative: 0.03 % Proclin 300
Constituents: 50 % Glycerol, 0.01M PBS, PH 7.4

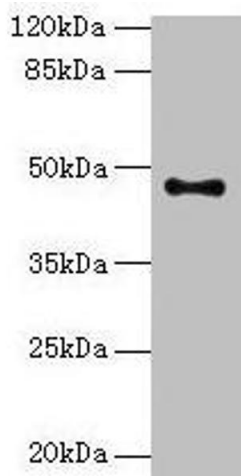
Preservative: ProClin

Precaution of Use: This product contains ProClin: a POISONOUS AND HAZARDOUS SUBSTANCE which should be handled by trained staff only.

Storage: -20 °C,-80 °C

Storage Comment: Upon receipt, store at -20°C or -80°C. Avoid repeated freeze.

Images



Western Blotting

Image 1. Western blot All lanes: AADACL2 antibody at 2 μ g/mL + PC-3 whole cell lysate Secondary Goat polyclonal to rabbit IgG at 1/10000 dilution Predicted band size: 47, 6 kDa
Observed band size: 47 kDa