

Datasheet for ABIN7144709

**anti-Asialoglycoprotein Receptor 1 antibody (AA 68-291)**[Go to Product page](#)**2** Images

## Overview

|                      |  |
|----------------------|--|
| Quantity:            | 100 µg   |
| Target:              | Asialoglycoprotein Receptor 1 (ASGR1)                        |
| Binding Specificity: | AA 68-291  |
| Reactivity:          | Human  |
| Host:                | Rabbit   |
| Clonality:           | Polyclonal   |
| Conjugate:           | This Asialoglycoprotein Receptor 1 antibody is un-conjugated |
| Application:         | ELISA, Immunohistochemistry (IHC), Immunofluorescence (IF)   |

## Product Details

|                   |  |
|-------------------|--|
| Immunogen:        | Recombinant Human Asialoglycoprotein receptor 1 protein (68-291AA) |
| Isotype:          | IgG  |
| Cross-Reactivity: | Human  |
| Purification:     | >95%, Protein G purified   |

## Target Details

|                   |  |
|-------------------|--|
| Target:           | Asialoglycoprotein Receptor 1 (ASGR1)  |
| Alternative Name: | ASGR1 ( <a href="#">ASGR1 Products</a> )   |
| Background:       | Background: Mediates the endocytosis of plasma glycoproteins to which the terminal sialic acid residue on their complex carbohydrate moieties has been removed. The receptor |

## Target Details

recognizes terminal galactose and N-acetylgalactosamine units. After ligand binding to the receptor, the resulting complex is internalized and transported to a sorting organelle, where receptor and ligand are disassociated. The receptor then returns to the cell membrane surface.

Aliases: ASGP-R 1 antibody, ASGPR 1 antibody, ASGPR antibody, ASGPR1 antibody, Asgr1 antibody, ASGR1\_HUMAN antibody, Asialoglycoprotein receptor 1 antibody, C type lectin domain family 4 member H1 antibody, C-type lectin domain family 4 member H1 antibody, CLEC4H1 antibody, Hepatic lectin H1 antibody, HL-1 antibody

UniProt: [P07306](#)

Pathways: [Thyroid Hormone Synthesis](#)

## Application Details

Application Notes: Recommended dilution: IHC:1:20-1:200, IF:1:50-1:200,

Restrictions: For Research Use only

## Handling

Format: Liquid

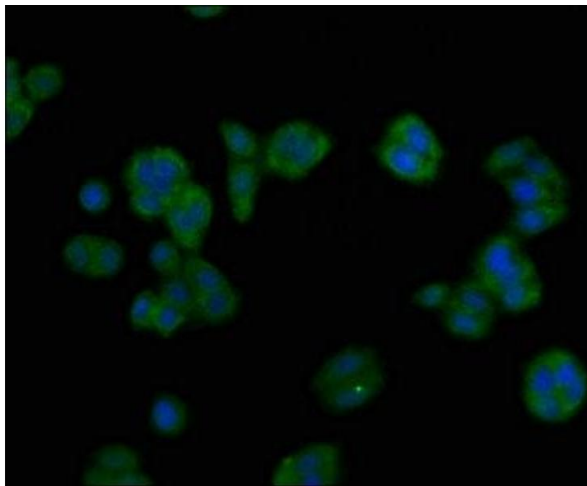
Buffer: Preservative: 0.03 % Proclin 300  
Constituents: 50 % Glycerol, 0.01M PBS, PH 7.4

Preservative: ProClin

Precaution of Use: This product contains ProClin: a POISONOUS AND HAZARDOUS SUBSTANCE which should be handled by trained staff only.

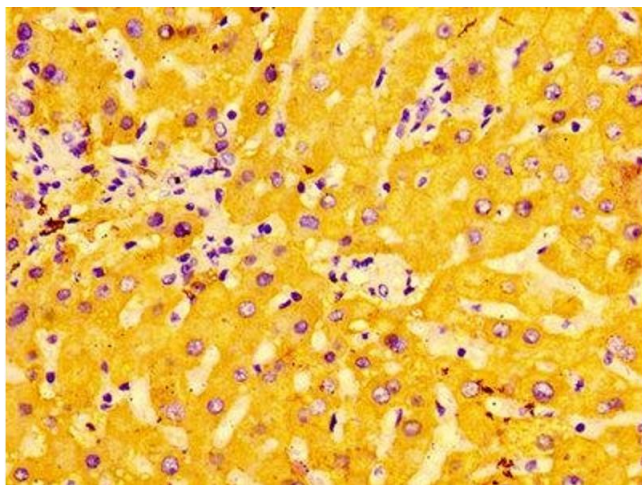
Storage: -20 °C,-80 °C

Storage Comment: Upon receipt, store at -20°C or -80°C. Avoid repeated freeze.



#### Immunofluorescence

**Image 1.** Immunofluorescent analysis of HepG2 cells using ABIN7144709 at dilution of 1:100 and Alexa Fluor 488-conjugated AffiniPure Goat Anti-Rabbit IgG(H+L)



#### Immunohistochemistry

**Image 2.** Immunohistochemistry of paraffin-embedded human liver tissue using ABIN7144709 at dilution of 1:100