

Datasheet for ABIN7144729
anti-GOT1 antibody (AA 2-411)

4 Images

[Go to Product page](#)

Overview

Quantity:	100 µg
Target:	GOT1
Binding Specificity:	AA 2-411
Reactivity:	Human
Host:	Rabbit
Clonality:	Polyclonal
Conjugate:	This GOT1 antibody is un-conjugated
Application:	Western Blotting (WB), Immunohistochemistry (IHC), ELISA, Immunofluorescence (IF)

Product Details

Immunogen:	Recombinant Human Aspartate aminotransferase, cytoplasmic protein (2-411AA)
Isotype:	IgG
Cross-Reactivity:	Human, Mouse
Purification:	>95%, Protein G purified

Target Details

Target:	GOT1
Alternative Name:	GOT1 (GOT1 Products)
Background:	Background: Plays a key role in amino acid metabolism. Aliases: AATC_HUMAN antibody, Aspartate aminotransferase 1 antibody, Aspartate

Target Details

aminotransferase antibody, Aspartate aminotransferase cytoplasmic antibody, Aspartate aminotransferase cytosolic antibody, ASTQTL1 antibody, cAspAT antibody, cCAT antibody, cysteine aminotransferase, cytoplasmic antibody, cysteine transaminase, cytoplasmic antibody, cytoplasmic antibody, ec 2.6.1.1 antibody, GIG 18 antibody, GIG18 antibody, Glutamate oxaloacetate transaminase 1 antibody, Glutamate oxaloacetate transaminase soluble antibody, Glutamic oxaloacetic transaminase 1 soluble antibody, GOT 1 antibody, GOT1 antibody, Growth inhibiting protein 18 antibody, SGOT antibody, Transaminase A antibody

UniProt: [P17174](#)

Pathways: [Hepatitis C](#), [Monocarboxylic Acid Catabolic Process](#), [Methionine Biosynthetic Process](#)

Application Details

Application Notes: Recommended dilution: WB:1:500-1:5000, IHC:1:200-1:500, IF:1:50-1:200,

Restrictions: For Research Use only

Handling

Format: Liquid

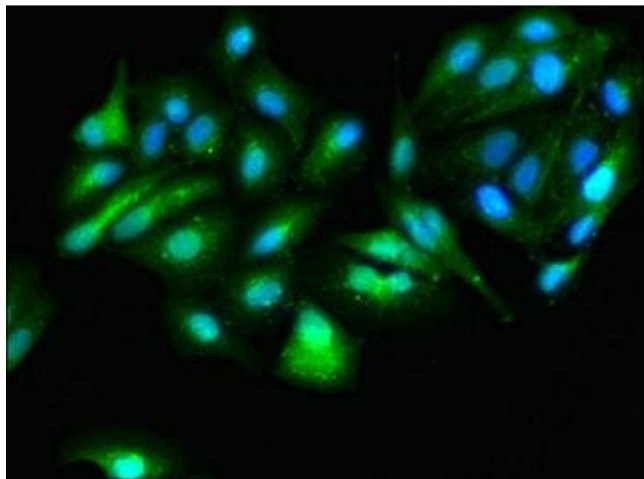
Buffer: Preservative: 0.03 % Proclin 300
Constituents: 50 % Glycerol, 0.01M PBS, PH 7.4

Preservative: ProClin

Precaution of Use: This product contains ProClin: a POISONOUS AND HAZARDOUS SUBSTANCE which should be handled by trained staff only.

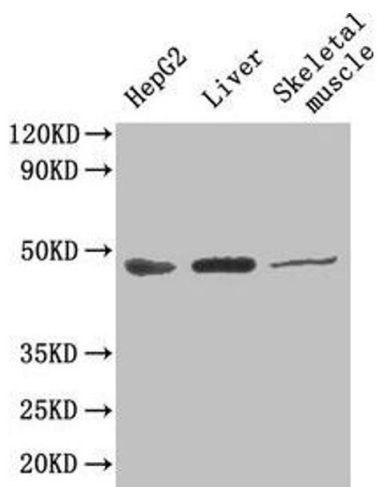
Storage: -20 °C,-80 °C

Storage Comment: Upon receipt, store at -20°C or -80°C. Avoid repeated freeze.



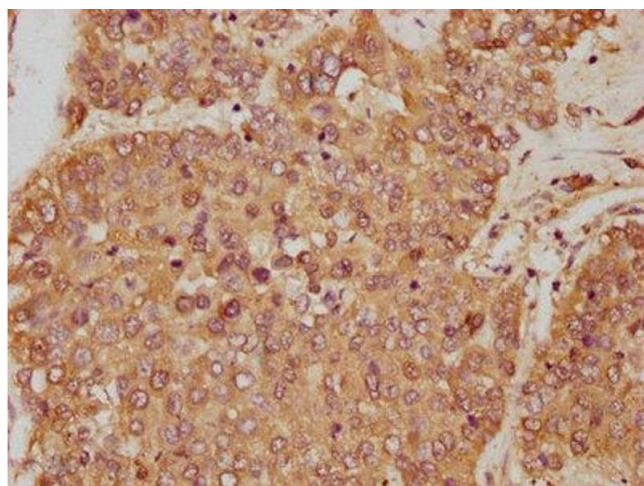
Immunofluorescence

Image 1. Immunofluorescence staining of HepG2 cells with ABIN7144729 at 1:166, counter-stained with DAPI. The cells were fixed in 4% formaldehyde, permeabilized using 0.2% Triton X-100 and blocked in 10% normal Goat Serum. The cells were then incubated with the antibody overnight at 4°C. The secondary antibody was Alexa Fluor 488-conjugated AffiniPure Goat Anti-Rabbit IgG(H+L).



Western Blotting

Image 2. Western Blot Positive WB detected in: HepG2 whole cell lysate, Mouse liver tissue, Mouse skeletal muscle tissue. All lanes: GOT1 antibody at 4.5 µg/mL. Secondary Goat polyclonal to rabbit IgG at 1/50000 dilution. Predicted band size: 47, 45 kDa. Observed band size: 47 kDa.



Immunohistochemistry

Image 3. IHC image of ABIN7144729 diluted at 1:250 and staining in paraffin-embedded human liver cancer performed on a Leica Bond™ system. After dewaxing and hydration, antigen retrieval was mediated by high pressure in a citrate buffer (pH 6.0). Section was blocked with 10% normal goat serum 30min at RT. Then primary antibody (1% BSA) was incubated at 4°C overnight. The primary is detected by a biotinylated secondary antibody and visualized using an HRP conjugated SP system.

Please check the [product details page](#) for more images. Overall 4 images are available for ABIN7144729.