



[Go to Product page](#)

Datasheet for ABIN7144765  
**anti-ASTL antibody (AA 38-337)**

2 Images

Overview

Quantity:	100 µg
Target:	ASTL
Binding Specificity:	AA 38-337
Reactivity:	Human
Host:	Rabbit
Clonality:	Polyclonal
Conjugate:	This ASTL antibody is un-conjugated
Application:	ELISA, Immunohistochemistry (IHC)

Product Details

Immunogen:	Recombinant Human Astacin-like metalloendopeptidase protein (38-337AA)
Isotype:	IgG
Cross-Reactivity:	Human
Purification:	>95%, Protein G purified

Target Details

Target:	ASTL
Alternative Name:	ASTL ( <a href="#">ASTL Products</a> )
Background:	Background: Oocyte-specific oolemmal receptor involved in sperm and egg adhesion and fertilization. Plays a role in the polyspermy inhibition. Probably acts as a protease for the post-

## Target Details

fertilization cleavage of ZP2. Cleaves the sperm-binding ZP2 at the surface of the zona pellucida after fertilization and cortical granule exocytosis, rendering the zona pellucida unable to support further sperm binding.

Aliases: ASTL Astacin-like metalloendopeptidase antibody, EC 3.4.-.- antibody, Oocyte astacin antibody, Ovastacin antibody

UniProt: [Q6HA08](#)

## Application Details

Application Notes: Recommended dilution: IHC:1:20-1:200,

Restrictions: For Research Use only

## Handling

Format: Liquid

Buffer: Preservative: 0.03 % Proclin 300  
Constituents: 50 % Glycerol, 0.01M PBS, PH 7.4

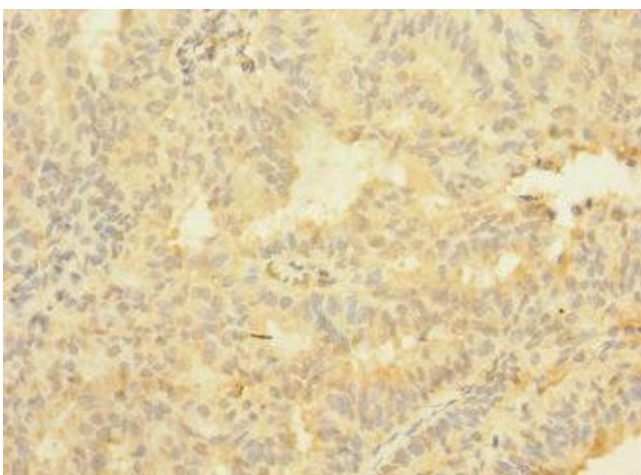
Preservative: ProClin

Precaution of Use: This product contains ProClin: a POISONOUS AND HAZARDOUS SUBSTANCE which should be handled by trained staff only.

Storage: -20 °C,-80 °C

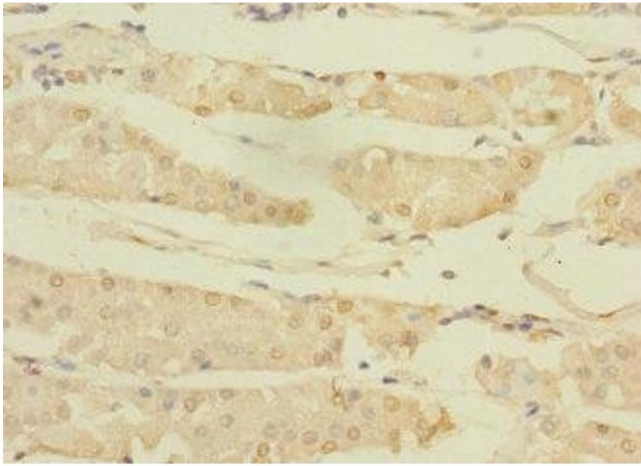
Storage Comment: Upon receipt, store at -20°C or -80°C. Avoid repeated freeze.

## Images



### Immunohistochemistry

**Image 1.** Immunohistochemistry of paraffin-embedded human endometrial cancer using ABIN7144765 at dilution of 1:100



### Immunohistochemistry

**Image 2.** Immunohistochemistry of paraffin-embedded human gastric cancer using ABIN7144765 at dilution of 1:100