

Datasheet for ABIN7144769
anti-PEA15 antibody (AA 1-130)

3 Images

[Go to Product page](#)

Overview

Quantity:	100 µL
Target:	PEA15
Binding Specificity:	AA 1-130
Reactivity:	Human
Host:	Rabbit
Clonality:	Polyclonal
Conjugate:	This PEA15 antibody is un-conjugated
Application:	Western Blotting (WB), ELISA, Immunohistochemistry (IHC), Immunofluorescence (IF)

Product Details

Immunogen:	Recombinant Human Astrocytic phosphoprotein PEA-15 protein (1-130AA)
Isotype:	IgG
Cross-Reactivity:	Human, Mouse
Purification:	Antigen Affinity Purified

Target Details

Target:	PEA15
Alternative Name:	PEA15 (PEA15 Products)
Background:	Background: Blocks Ras-mediated inhibition of integrin activation and modulates the ERK MAP kinase cascade. Inhibits RPS6KA3 activities by retaining it in the cytoplasm (By similarity).

Target Details

Inhibits both TNFRSF6- and TNFRSF1A-mediated CASP8 activity and apoptosis. Regulates glucose transport by controlling both the content of SLC2A1 glucose transporters on the plasma membrane and the insulin-dependent trafficking of SLC2A4 from the cell interior to the surface.

Aliases: 15 kDa phosphoprotein enriched in astrocytes antibody, Astrocytic phosphoprotein PEA 15 antibody, Astrocytic phosphoprotein PEA-15 antibody, Astrocytic phosphoprotein PEA15 antibody, HMAT 1 antibody, HMAT1 antibody, Homolog of mouse MAT 1 oncogene antibody, Homolog of mouse MAT1 oncogene antibody, HUMMAT 1H antibody, HUMMAT1H antibody, MAT 1 antibody, MAT 1H antibody, MAT1 antibody, MAT1H antibody, PEA 15 antibody, Pea15 antibody, PEA15 protein antibody, PEA15_HUMAN antibody, PED antibody, Phosphoprotein enriched in astrocytes 15 antibody, Phosphoprotein enriched in astrocytes 15kD antibody, Phosphoprotein enriched in diabetes antibody

UniProt: [Q15121](#)

Application Details

Application Notes: Recommended dilution: WB:1:500-1:2000, IHC:1:20-1:200, IF:1:50-1:200,

Restrictions: For Research Use only

Handling

Format: Liquid

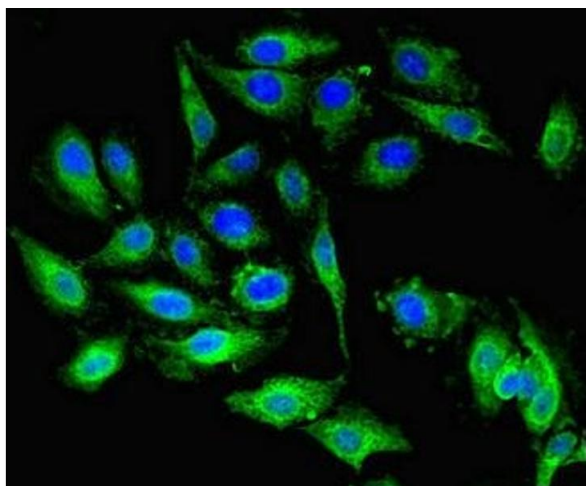
Buffer: PBS with 0.02 % sodium azide, 50 % glycerol, pH 7.3.

Preservative: Sodium azide

Precaution of Use: This product contains Sodium azide: a POISONOUS AND HAZARDOUS SUBSTANCE which should be handled by trained staff only.

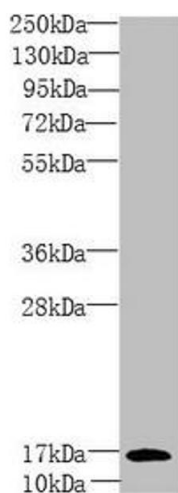
Storage: -20 °C, -80 °C

Storage Comment: Upon receipt, store at -20°C or -80°C. Avoid repeated freeze.



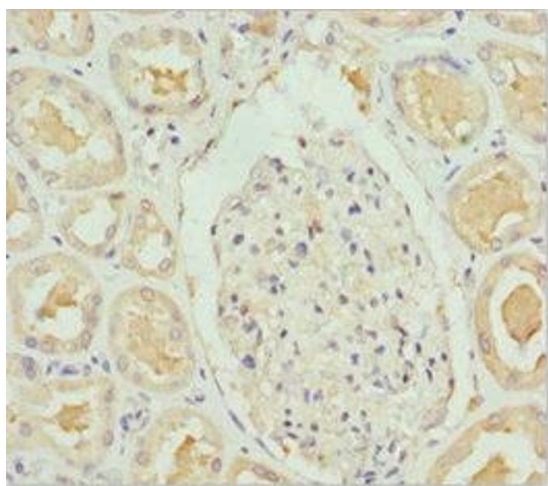
Immunofluorescence

Image 1. Immunofluorescent analysis of HeLa cells using ABIN7144769 at dilution of 1:100 and Alexa Fluor 488-conjugated AffiniPure Goat Anti-Rabbit IgG(H+L)



Western Blotting

Image 2. Western blot All lanes: PEA15 antibody at 1.81 μ g/mL + Mouse brain tissue Secondary Goat polyclonal to rabbit IgG at 1/10000 dilution Predicted band size: 16, 18 kDa Observed band size: 16 kDa



Immunohistochemistry

Image 3. Immunohistochemistry of paraffin-embedded human kidney tissue using ABIN7144769 at dilution of 1:100