

Datasheet for ABIN7144809
anti-ATL1 antibody (AA 220-350)[Go to Product page](#)

1 Image

Overview

Quantity:	100 µg
Target:	ATL1
Binding Specificity:	AA 220-350
Reactivity:	Human
Host:	Rabbit
Clonality:	Polyclonal
Conjugate:	This ATL1 antibody is un-conjugated
Application:	ELISA, Immunohistochemistry (IHC)

Product Details

Immunogen:	Recombinant Human Atlastin-1 protein (220-350AA)
Isotype:	IgG
Cross-Reactivity:	Human
Purification:	>95%, Protein G purified

Target Details

Target:	ATL1
Alternative Name:	ATL1 (ATL1 Products)
Background:	Background: GTPase tethering membranes through formation of trans-homooligomers and mediating homotypic fusion of endoplasmic reticulum membranes. Functions in endoplasmic

Target Details

reticulum tubular network biogenesis. May also regulate Golgi biogenesis. May regulate axonal development.

Aliases: AD FSP antibody, at11 antibody, ATLA1_HUMAN antibody, Atlastin GTPase 1 antibody, Atlastin-1 antibody, Atlastin1 antibody, Brain specific GTP binding protein antibody, Brain-specific GTP-binding protein antibody, FSP1 antibody, GBP-3 antibody, GBP3 antibody, GTP-binding protein 3 antibody, Guanine nucleotide-binding protein 3 antibody, Guanylate binding protein 3 antibody, hGBP3 antibody, HSN1D antibody, Spastic paraplegia 3 protein A antibody, SPG 3A antibody, SPG3 antibody, SPG3A antibody, SPG3A gene antibody

UniProt: [Q8WXF7](#)

Application Details

Application Notes: Recommended dilution: IHC:1:20-1:200,

Restrictions: For Research Use only

Handling

Format: Liquid

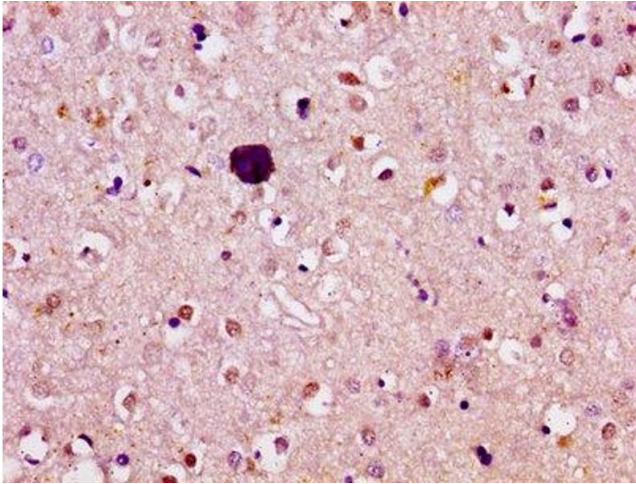
Buffer: Preservative: 0.03 % Proclin 300
Constituents: 50 % Glycerol, 0.01M PBS, pH 7.4

Preservative: ProClin

Precaution of Use: This product contains ProClin: a POISONOUS AND HAZARDOUS SUBSTANCE which should be handled by trained staff only.

Storage: -20 °C,-80 °C

Storage Comment: Upon receipt, store at -20°C or -80°C. Avoid repeated freeze.



Immunohistochemistry

Image 1. IHC image of ABIN7144809 diluted at 1:100 and staining in paraffin-embedded human brain tissue performed on a Leica Bond™ system. After dewaxing and hydration, antigen retrieval was mediated by high pressure in a citrate buffer (pH 6.0). Section was blocked with 10% normal goat serum 30min at RT. Then primary antibody (1% BSA) was incubated at 4°C overnight. The primary is detected by a biotinylated secondary antibody and visualized using an HRP conjugated SP system.