

Datasheet for ABIN7144813
anti-ATL2 antibody (AA 1-300)



[Go to Product page](#)

4 Images

Overview

Quantity:	100 µg
Target:	ATL2
Binding Specificity:	AA 1-300
Reactivity:	Human
Host:	Rabbit
Clonality:	Polyclonal
Conjugate:	This ATL2 antibody is un-conjugated
Application:	Western Blotting (WB), ELISA, Immunohistochemistry (IHC), Immunofluorescence (IF)

Product Details

Immunogen:	Recombinant Human Atlantin-2 protein (1-300AA)
Isotype:	IgG
Cross-Reactivity:	Human
Purification:	Antigen Affinity Purified

Target Details

Target:	ATL2
Alternative Name:	ATL2 (ATL2 Products)
Background:	Background: GTPase tethering membranes through formation of trans-homooligomers and mediating homotypic fusion of endoplasmic reticulum membranes. Functions in endoplasmic

Target Details

reticulum tubular network biogenesis.

Aliases: ADP ribosylation factor like 6 interacting protein 2 antibody, ADP ribosylation factor like protein 6 interacting protein 2 antibody, ADP-ribosylation factor-like protein 6-interacting protein 2 antibody, Aip 2 antibody, Aip-2 antibody, Aip2 antibody, ARL 6 interacting protein 2 antibody, ARL-6-interacting protein 2 antibody, ARL3IP2 antibody, ARL6IP 2 antibody, ATL 2 antibody, ATL2 antibody, ATLA2_HUMAN antibody, Atlastin 2 antibody, Atlastin GTPase 2 antibody, Atlastin-2 antibody, Atlastin2 antibody, FLJ23293 antibody

UniProt: [Q8NHH9](#)

Application Details

Application Notes: Recommended dilution: WB:1:500-1:2000, IHC:1:20-1:200, IF:1:50-1:200,

Restrictions: For Research Use only

Handling

Format: Liquid

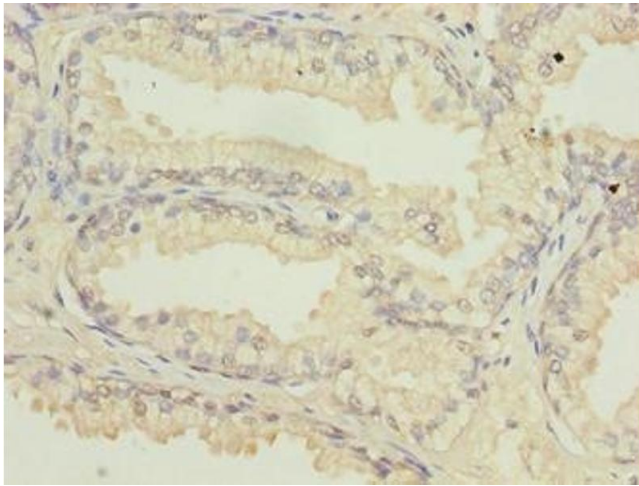
Buffer: Preservative: 0.03 % Proclin 300
Constituents: 50 % Glycerol, 0.01M PBS, PH 7.4

Preservative: ProClin

Precaution of Use: This product contains ProClin: a POISONOUS AND HAZARDOUS SUBSTANCE which should be handled by trained staff only.

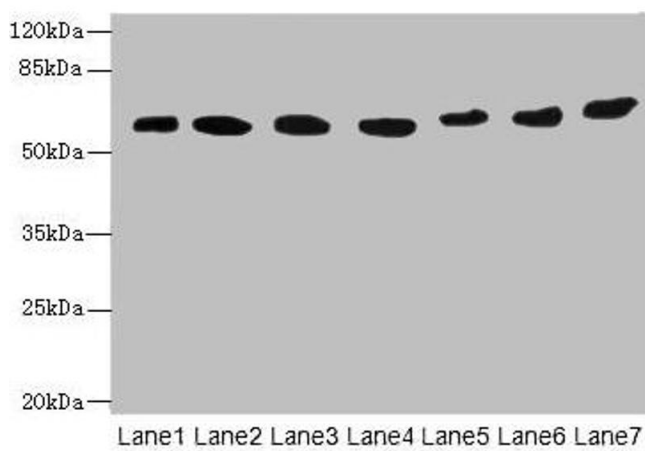
Storage: -20 °C,-80 °C

Storage Comment: Upon receipt, store at -20°C or -80°C. Avoid repeated freeze.



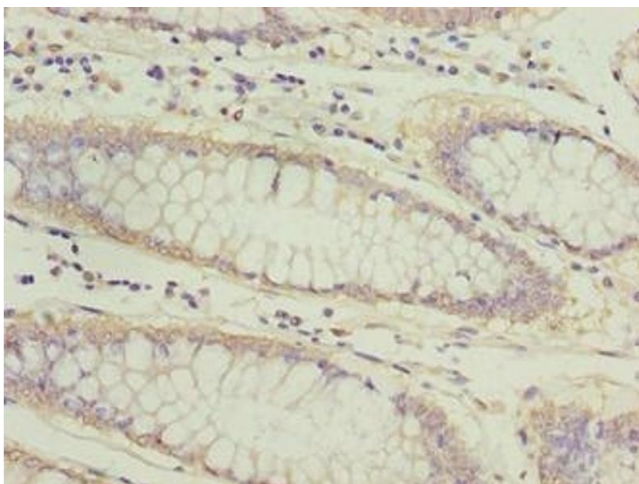
Immunohistochemistry

Image 1. Immunohistochemistry of paraffin-embedded human prostate cancer using ABIN7144813 at dilution of 1:100



Western Blotting

Image 2. Western blot All lanes: ATL2 antibody at 1 µg/mL
Lane 1: HepG2 whole cell lysate Lane 2: MCF-7 whole cell lysate Lane 3: HL60 whole cell lysate Lane 4: K562 whole cell lysate Lane 5: U251 whole cell lysate Lane 6: A549 whole cell lysate Lane 7: A431 whole cell lysate Secondary Goat polyclonal to rabbit IgG at 1/10000 dilution Predicted band size: 67, 47, 66, 65 kDa Observed band size: 67 kDa



Immunohistochemistry

Image 3. Immunohistochemistry of paraffin-embedded human colon cancer using ABIN7144813 at dilution of 1:100

Please check the [product details page](#) for more images. Overall 4 images are available for ABIN7144813.