



[Go to Product page](#)

Datasheet for ABIN7144824
anti-ATPAF1 antibody (AA 58-143)

1 Image

Overview

Quantity:	100 µg
Target:	ATPAF1
Binding Specificity:	AA 58-143
Reactivity:	Human
Host:	Rabbit
Clonality:	Polyclonal
Conjugate:	This ATPAF1 antibody is un-conjugated
Application:	ELISA, Immunohistochemistry (IHC)

Product Details

Immunogen:	Recombinant Human ATP synthase mitochondrial F1 complex assembly factor 1 protein (58-143AA)
Isotype:	IgG
Cross-Reactivity:	Human
Purification:	>95%, Protein G purified

Target Details

Target:	ATPAF1
Alternative Name:	ATPAF1 (ATPAF1 Products)
Background:	Background: May play an essential role for the assembly of the mitochondrial F1-F0 complex.

Target Details

Aliases: ATP synthase mitochondrial F1 complex assembly factor 1 antibody, ATP11 antibody, ATP11 homolog antibody, ATP11p antibody, ATPAF 1 antibody, atpaf1 antibody, ATPF1_HUMAN antibody, FLJ22351 antibody, Homolog of yeast ATP11 antibody, MGC88060 antibody

UniProt: [Q5TC12](#)

Application Details

Application Notes: Recommended dilution: IHC:1:200-1:500,

Restrictions: For Research Use only

Handling

Format: Liquid

Buffer: Preservative: 0.03 % Proclin 300
Constituents: 50 % Glycerol, 0.01M PBS, pH 7.4

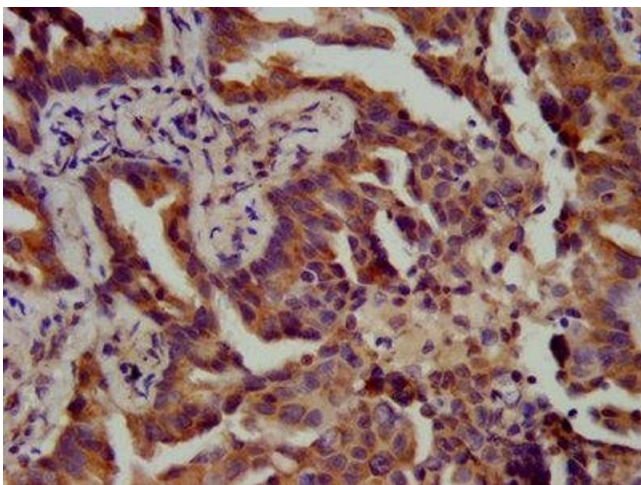
Preservative: ProClin

Precaution of Use: This product contains ProClin: a POISONOUS AND HAZARDOUS SUBSTANCE which should be handled by trained staff only.

Storage: -20 °C,-80 °C

Storage Comment: Upon receipt, store at -20°C or -80°C. Avoid repeated freeze.

Images



Immunohistochemistry

Image 1. IHC image of ABIN7144824 diluted at 1:400 and staining in paraffin-embedded human lung cancer performed on a Leica Bond™ system. After dewaxing and hydration, antigen retrieval was mediated by high pressure in a citrate buffer (pH 6.0). Section was blocked with 10% normal goat serum 30min at RT. Then primary antibody (1% BSA) was incubated at 4°C overnight. The primary is detected by a biotinylated secondary antibody and visualized using an HRP conjugated SP system.