



[Go to Product page](#)

Datasheet for ABIN7144872

anti-ABCA12 antibody (AA 45-158)

1 Image

Overview

Quantity:	100 µg
Target:	ABCA12
Binding Specificity:	AA 45-158
Reactivity:	Human
Host:	Rabbit
Clonality:	Polyclonal
Conjugate:	This ABCA12 antibody is un-conjugated
Application:	ELISA, Immunofluorescence (IF)

Product Details

Immunogen:	Recombinant Human ATP-binding cassette sub-family A member 12 protein (45-158AA)
Isotype:	IgG
Cross-Reactivity:	Human
Purification:	>95%, Protein G purified

Target Details

Target:	ABCA12
Alternative Name:	ABCA12 (ABCA12 Products)
Background:	Background: Probable transporter involved in lipid homeostasis. Aliases: ABC transporter A family member 12 antibody, ABC transporter ABCA.12 antibody,

Target Details

ABC12 antibody, ABCA12 antibody, ABCAC_HUMAN antibody, AtABCA12 antibody, ATH16 antibody, ATP binding cassette 12 antibody, ATP binding cassette sub family A (ABC1) member 12 antibody, ATP binding cassette sub family A member 12 antibody, ATP binding cassette transporter 12 antibody, ATP-binding cassette 12 antibody, ATP-binding cassette sub-family A member 12 antibody, ATP-binding cassette transporter 12 antibody, Ichthyosis congenita II lamellar ichthyosis B antibody, ICR2B antibody, LI2 antibody, Putative ABC2 homolog 16 antibody

UniProt: [Q86UK0](#)

Application Details

Application Notes: Recommended dilution: IF:1:50-1:200,

Restrictions: For Research Use only

Handling

Format: Liquid

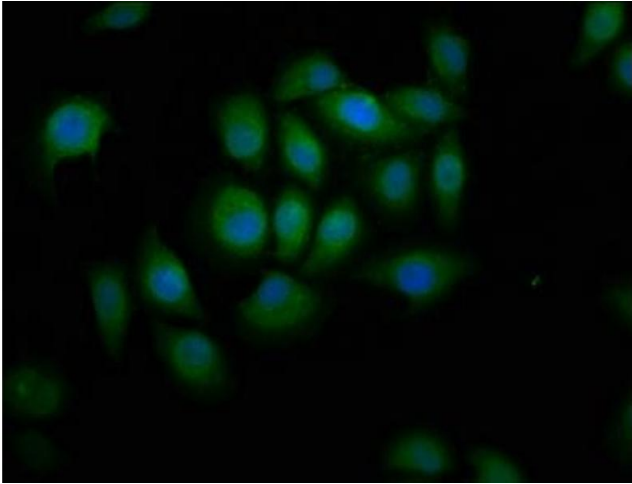
Buffer: Preservative: 0.03 % Proclin 300
Constituents: 50 % Glycerol, 0.01M PBS, pH 7.4

Preservative: ProClin

Precaution of Use: This product contains ProClin: a POISONOUS AND HAZARDOUS SUBSTANCE which should be handled by trained staff only.

Storage: -20 °C,-80 °C

Storage Comment: Upon receipt, store at -20°C or -80°C. Avoid repeated freeze.



Immunofluorescence

Image 1. Immunofluorescence staining of A549 cells with ABIN7144872 at 1:166, counter-stained with DAPI. The cells were fixed in 4% formaldehyde, permeabilized using 0.2% Triton X-100 and blocked in 10% normal Goat Serum. The cells were then incubated with the antibody overnight at 4°C. The secondary antibody was Alexa Fluor 488-conjugated AffiniPure Goat Anti-Rabbit IgG(H+L).