

Datasheet for ABIN7144889
anti-ABCB5 antibody (AA 547-760)

3 Images

[Go to Product page](#)

Overview

Quantity:	100 µg
Target:	ABCB5
Binding Specificity:	AA 547-760
Reactivity:	Human
Host:	Rabbit
Clonality:	Polyclonal
Conjugate:	This ABCB5 antibody is un-conjugated
Application:	ELISA, Immunohistochemistry (IHC), Immunofluorescence (IF)

Product Details

Immunogen:	Recombinant Human ATP-binding cassette sub-family B member 5 protein (547-760AA)
Isotype:	IgG
Cross-Reactivity:	Human
Purification:	>95%, Protein G purified

Target Details

Target:	ABCB5
Alternative Name:	ABCB5 (ABCB5 Products)
Background:	Background: Drug efflux transporter present in a number of stem cells that acts as a regulator of cellular differentiation. Able to mediate efflux from cells of the rhodamine dye and of the

Target Details

therapeutic drug doxorubicin. Specifically present in limbal stem cells, where it plays a key role in corneal development and repair.

Aliases: ABCB 5 antibody, ABCB5 antibody, ABCB5 P-gp antibody, ABCB5_HUMAN antibody, ABCB5alpha antibody, ABCB5beta antibody, ATP binding cassette protein antibody, ATP binding cassette sub family B (MDR/TAP) member 5 antibody, ATP binding cassette sub family B member 5 antibody, ATP-binding cassette sub-family B member 5 antibody, EST422562 antibody, P glycoprotein ABCB5 antibody, P-glycoprotein ABCB5 antibody

UniProt: [Q2M3G0](#)

Application Details

Application Notes: Recommended dilution: IHC:1:20-1:200, IF:1:50-1:200,

Restrictions: For Research Use only

Handling

Format: Liquid

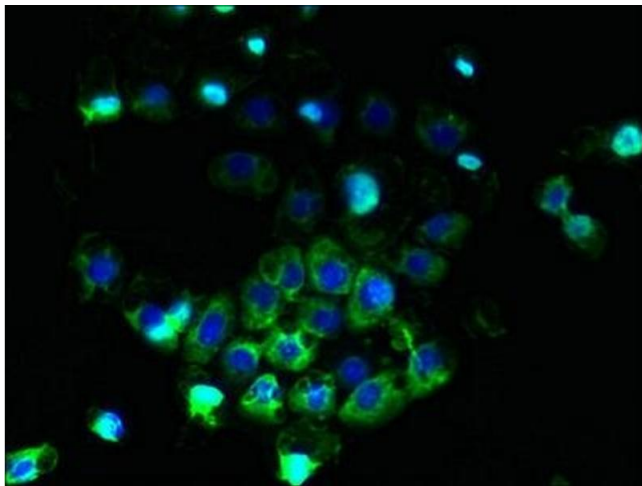
Buffer: Preservative: 0.03 % Proclin 300
Constituents: 50 % Glycerol, 0.01M PBS, PH 7.4

Preservative: ProClin

Precaution of Use: This product contains ProClin: a POISONOUS AND HAZARDOUS SUBSTANCE which should be handled by trained staff only.

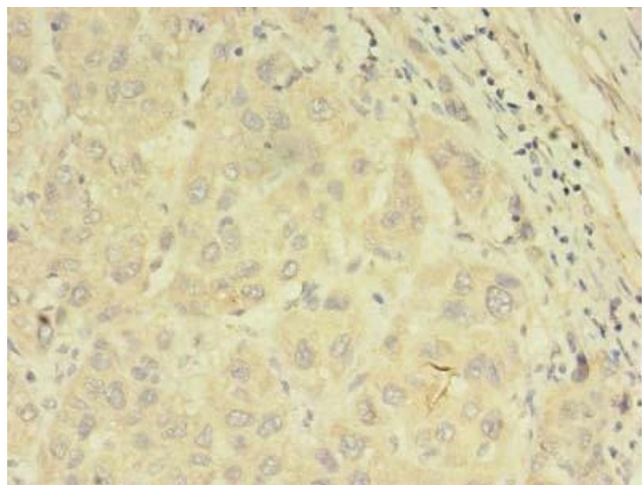
Storage: -20 °C,-80 °C

Storage Comment: Upon receipt, store at -20°C or -80°C. Avoid repeated freeze.



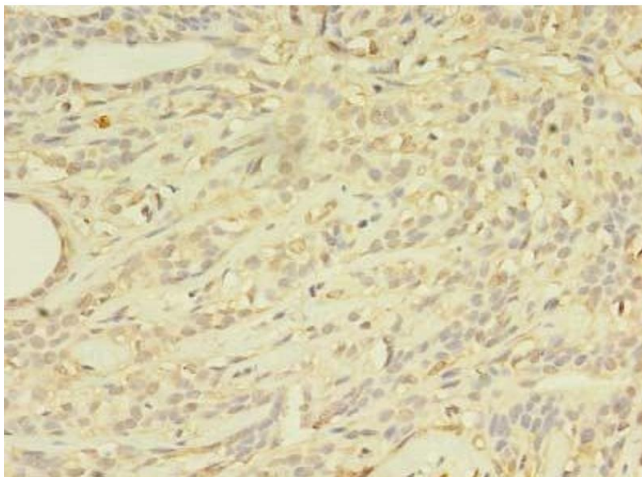
Immunofluorescence

Image 1. Immunofluorescent analysis of A431 cells using ABIN7144889 at dilution of 1:100 and Alexa Fluor 488-conjugated AffiniPure Goat Anti-Rabbit IgG(H+L)



Immunohistochemistry

Image 2. Immunohistochemistry of paraffin-embedded human liver cancer using ABIN7144889 at dilution of 1:100



Immunohistochemistry

Image 3. Immunohistochemistry of paraffin-embedded human breast cancer using ABIN7144889 at dilution of 1:100