



Datasheet for ABIN7144908  
**anti-ABCC9 antibody (AA 560-669)**



[Go to Product page](#)

2 Images

Overview

Quantity:	100 µg
Target:	ABCC9
Binding Specificity:	AA 560-669
Reactivity:	Human
Host:	Rabbit
Clonality:	Polyclonal
Conjugate:	This ABCC9 antibody is un-conjugated
Application:	Immunohistochemistry (IHC), ELISA, Immunofluorescence (IF)

Product Details

Immunogen:	Recombinant Human ATP-binding cassette sub-family C member 9 protein (560-669AA)
Isotype:	IgG
Cross-Reactivity:	Human
Purification:	>95%, Protein G purified

Target Details

Target:	ABCC9
Alternative Name:	ABCC9 ( <a href="#">ABCC9 Products</a> )
Background:	Background: Subunit of ATP-sensitive potassium channels (KATP). Can form cardiac and smooth muscle-type KATP channels with KCNJ11. KCNJ11 forms the channel pore while

## Target Details

---

ABCC9 is required for activation and regulation.

Aliases: ABC37 antibody, abcC9 antibody, ABCC9\_HUMAN antibody, AI414027 antibody, AI449286 antibody, ATFB12 antibody, ATP-binding cassette sub-family C member 9 antibody, ATP-binding cassette transporter sub-family C member 9 antibody, ATP-binding cassette, sub-family C (CFTR/MRP), member 9 antibody, CANTU antibody, CMD10 antibody, FLJ36852 antibody, Sulfonylurea receptor 2 antibody, Sulfonylurea-binding protein 2 antibody, SUR2 antibody, SUR2A antibody, SUR2B antibody

---

UniProt: [O60706](#)

## Application Details

---

Application Notes: Recommended dilution: IHC:1:20-1:200, IF:1:50-1:200,

Restrictions: For Research Use only

## Handling

---

Format: Liquid

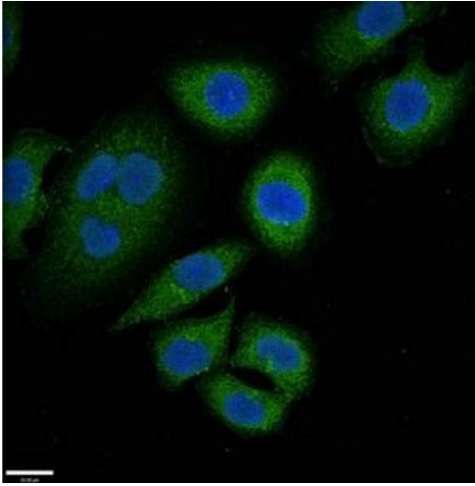
Buffer: Preservative: 0.03 % Proclin 300  
Constituents: 50 % Glycerol, 0.01M PBS, pH 7.4

Preservative: ProClin

Precaution of Use: This product contains ProClin: a POISONOUS AND HAZARDOUS SUBSTANCE which should be handled by trained staff only.

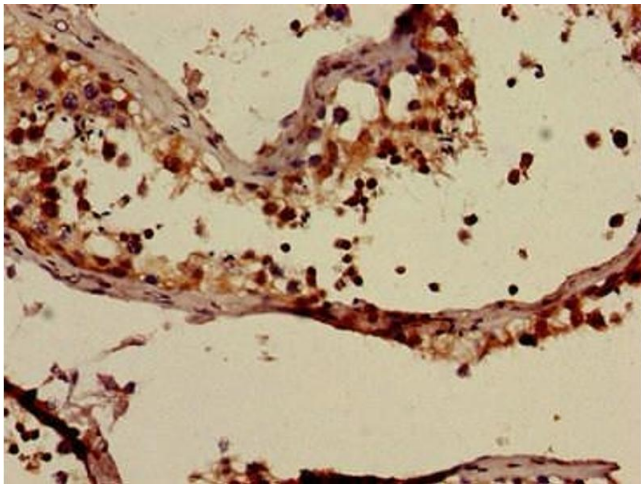
Storage: -20 °C,-80 °C

Storage Comment: Upon receipt, store at -20°C or -80°C. Avoid repeated freeze.



#### Immunofluorescence

**Image 1.** Immunofluorescent analysis of A549 cells using ABIN7144908 at dilution of 1:100 and Alexa Fluor 488-conjugated AffiniPure Goat Anti-Rabbit IgG(H+L)



#### Immunohistochemistry

**Image 2.** Immunohistochemistry of paraffin-embedded human testis tissue using ABIN7144908 at dilution of 1:100