

Datasheet for ABIN7144938  
**anti-ABCG5 antibody (AA 1-127)**

## 4 Images

[Go to Product page](#)

## Overview

Quantity:	100 µg
Target:	ABCG5
Binding Specificity:	AA 1-127
Reactivity:	Human
Host:	Rabbit
Clonality:	Polyclonal
Conjugate:	This ABCG5 antibody is un-conjugated
Application:	Western Blotting (WB), ELISA, Immunohistochemistry (IHC), Immunofluorescence (IF)

## Product Details

Immunogen:	Recombinant Human ATP-binding cassette sub-family G member 5 protein (1-127AA)
Isotype:	IgG
Cross-Reactivity:	Human
Purification:	>95%, Protein G purified

## Target Details

Target:	ABCG5
Alternative Name:	ABCG5 ( <a href="#">ABCG5 Products</a> )
Background:	Background: Transporter that appears to play an indispensable role in the selective transport of the dietary cholesterol in and out of the enterocytes and in the selective sterol excretion by the

## Target Details

liver into bile.

Aliases: Abcg5 antibody, ABCG5\_HUMAN antibody, ATP binding cassette sub family G (WHITE) member 5 (sterolin 1) antibody, ATP binding cassette sub family G member 5 antibody, ATP-binding cassette sub-family G member 5 antibody, ATP-binding cassette, sub-family G (WHITE), member 5 antibody, Sterolin 1 antibody, Sterolin-1 antibody, STSL antibody

UniProt: [Q9H222](#)

Pathways: [Lipid Metabolism](#)

## Application Details

Application Notes: Recommended dilution: WB:1:500-1:5000, IHC:1:500-1:1000, IF:1:50-1:200,

Restrictions: For Research Use only

## Handling

Format: Liquid

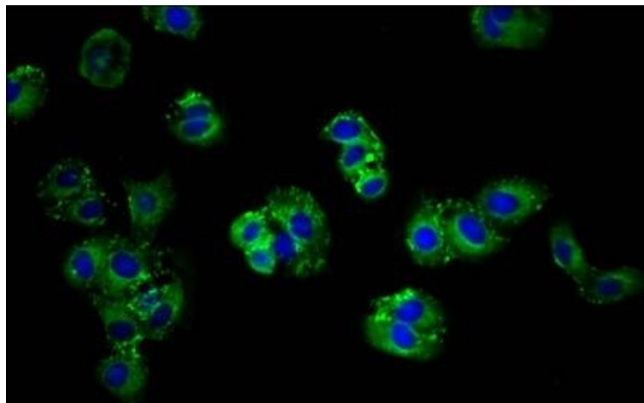
Buffer: Preservative: 0.03 % Proclin 300  
Constituents: 50 % Glycerol, 0.01M PBS, pH 7.4

Preservative: ProClin

Precaution of Use: This product contains ProClin: a POISONOUS AND HAZARDOUS SUBSTANCE which should be handled by trained staff only.

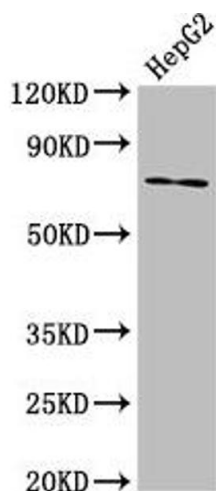
Storage: -20 °C, -80 °C

Storage Comment: Upon receipt, store at -20°C or -80°C. Avoid repeated freeze.



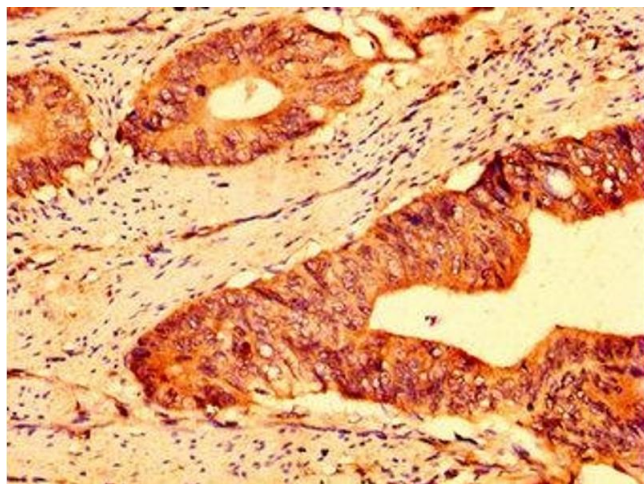
#### Immunofluorescence

**Image 1.** Immunofluorescence staining of HepG2 cells with ABIN7144938 at 1:166, counter-stained with DAPI. The cells were fixed in 4% formaldehyde, permeabilized using 0.2% Triton X-100 and blocked in 10% normal Goat Serum. The cells were then incubated with the antibody overnight at 4°C. The secondary antibody was Alexa Fluor 488-conjugated AffiniPure Goat Anti-Rabbit IgG(H+L).



#### Western Blotting

**Image 2.** Western Blot Positive WB detected in: HepG2 whole cell lysate. All lanes: ABCG5 antibody at 8.7 µg/mL. Secondary Goat polyclonal to rabbit IgG at 1/50000 dilution. Predicted band size: 73, 29 kDa. Observed band size: 73 kDa.



#### Immunohistochemistry

**Image 3.** IHC image of ABIN7144938 diluted at 1:500 and staining in paraffin-embedded human colon cancer performed on a Leica Bond™ system. After dewaxing and hydration, antigen retrieval was mediated by high pressure in a citrate buffer (pH 6.0). Section was blocked with 10% normal goat serum 30min at RT. Then primary antibody (1% BSA) was incubated at 4°C overnight. The primary is detected by a biotinylated secondary antibody and visualized using an HRP conjugated SP system.

Please check the [product details page](#) for more images. Overall 4 images are available for ABIN7144938.