

Datasheet for ABIN7144942
anti-ABCG8 antibody (AA 176-413)

3 Images

[Go to Product page](#)

Overview

Quantity:	100 µg
Target:	ABCG8
Binding Specificity:	AA 176-413
Reactivity:	Human
Host:	Rabbit
Clonality:	Polyclonal
Conjugate:	This ABCG8 antibody is un-conjugated
Application:	Western Blotting (WB), ELISA, Immunohistochemistry (IHC), Immunofluorescence (IF)

Product Details

Immunogen:	Recombinant Human ATP-binding cassette sub-family G member 8 protein (176-413AA)
Isotype:	IgG
Cross-Reactivity:	Human, Mouse
Purification:	>95%, Protein G purified

Target Details

Target:	ABCG8
Alternative Name:	ABCG8 (ABCG8 Products)
Background:	Background: Transporter that appears to play an indispensable role in the selective transport of the dietary cholesterol in and out of the enterocytes and in the selective sterol excretion by the

Target Details

liver into bile.

Aliases: ABCG8 antibody, ABCG8_HUMAN antibody, ATP binding cassette sub family G (WHITE) member 8 (sterolin 2) antibody, ATP binding cassette sub family G member 8 antibody, ATP binding cassette, sub family G (WHITE), member 8 antibody, ATP-binding cassette sub-family G member 8 antibody, GBD4 antibody, MGC142217 antibody, Sterolin 2 antibody, Sterolin-2 antibody, STSL antibody

UniProt: [Q9H221](#)

Pathways: [Lipid Metabolism](#)

Application Details

Application Notes: Recommended dilution: WB:1:2000-1:10000, IHC:1:20-1:200, IF:1:50-1:200,

Restrictions: For Research Use only

Handling

Format: Liquid

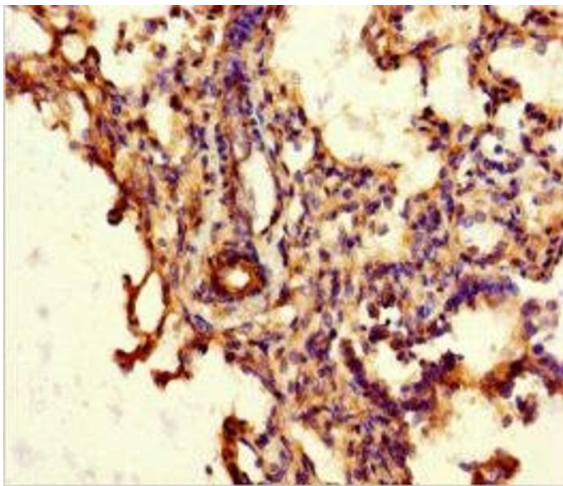
Buffer: Preservative: 0.03 % Proclin 300
Constituents: 50 % Glycerol, 0.01M PBS, PH 7.4

Preservative: ProClin

Precaution of Use: This product contains ProClin: a POISONOUS AND HAZARDOUS SUBSTANCE which should be handled by trained staff only.

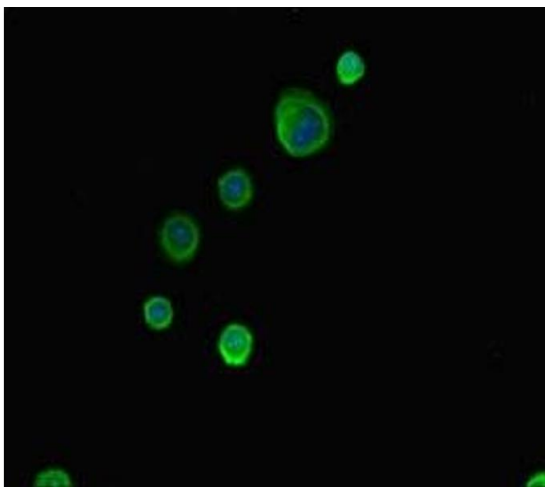
Storage: -20 °C,-80 °C

Storage Comment: Upon receipt, store at -20°C or -80°C. Avoid repeated freeze.



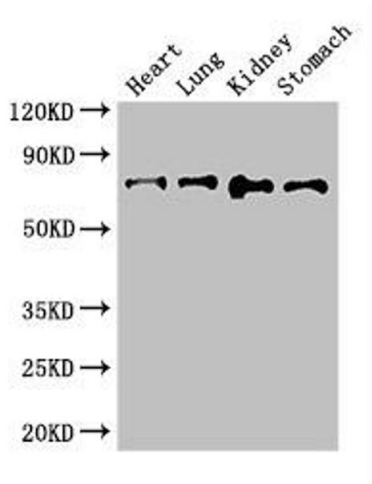
Immunohistochemistry

Image 1. Immunohistochemistry of paraffin-embedded human lung tissue using ABIN7144942 at dilution of 1:100



Immunofluorescence

Image 2. Immunofluorescent analysis of MCF-7 cells using ABIN7144942 at dilution of 1:100 and Alexa Fluor 488-conjugated AffiniPure Goat Anti-Rabbit IgG(H+L)



Western Blotting

Image 3. Western Blot Positive WB detected in: Mouse heart tissue, Mouse lung tissue, Mouse kidney tissue, Mouse stomach tissue All lanes: ABCG8 antibody at 2.8 µg/mL Secondary Goat polyclonal to rabbit IgG at 1/50000 dilution Predicted band size: 76 kDa Observed band size: 76 kDa