



[Go to Product page](#)

Datasheet for ABIN7144946
anti-ACLY antibody (AA 4-265)

4 Images

Overview

Quantity:	100 µg
Target:	ACLY
Binding Specificity:	AA 4-265
Reactivity:	Human
Host:	Rabbit
Clonality:	Polyclonal
Conjugate:	This ACLY antibody is un-conjugated
Application:	Western Blotting (WB), ELISA, Immunohistochemistry (IHC), Immunofluorescence (IF)

Product Details

Immunogen:	Recombinant Human ATP-citrate synthase protein (4-265AA)
Isotype:	IgG
Cross-Reactivity:	Human
Purification:	>95%, Protein G purified

Target Details

Target:	ACLY
Alternative Name:	ACLY (ACLY Products)
Background:	Background: ATP-citrate synthase is the primary enzyme responsible for the synthesis of cytosolic acetyl-CoA in many tissues. Has a central role in de novo lipid synthesis. In nervous

Target Details

tissue it may be involved in the biosynthesis of acetylcholine.

Aliases: ACL antibody, Acly antibody, ACLY_HUMAN antibody, ATP citrate (pro-S) lyase antibody, ATP citrate lyase antibody, ATP citrate synthase antibody, ATP-citrate (pro-S)-lyase antibody, ATP-citrate synthase antibody, ATPcitrate synthase antibody, ATPCL antibody, Citrate cleavage enzyme antibody, CLATP antibody, OTTHUMP00000164773 antibody

UniProt: [P53396](#)

Pathways: [Warburg Effect](#)

Application Details

Application Notes: Recommended dilution: WB:1:500-1:5000, IHC:1:20-1:200, IF:1:50-1:200,

Restrictions: For Research Use only

Handling

Format: Liquid

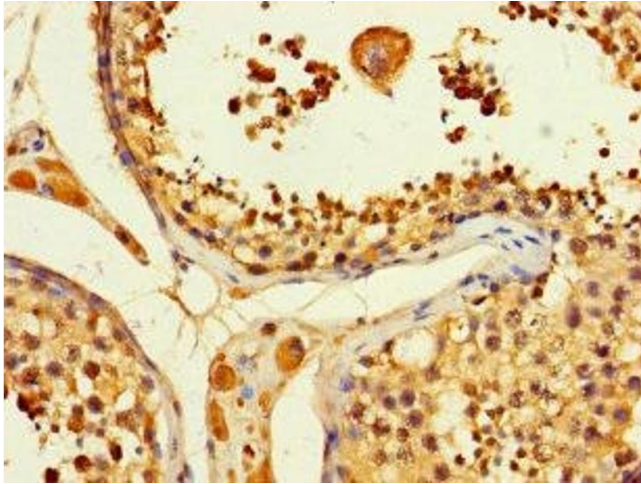
Buffer: Preservative: 0.03 % Proclin 300
Constituents: 50 % Glycerol, 0.01M PBS, PH 7.4

Preservative: ProClin

Precaution of Use: This product contains ProClin: a POISONOUS AND HAZARDOUS SUBSTANCE which should be handled by trained staff only.

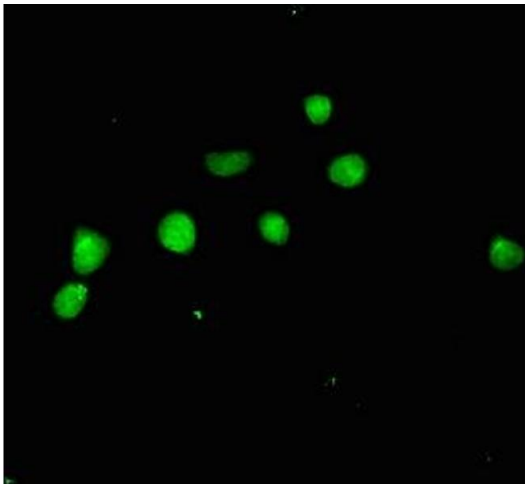
Storage: -20 °C,-80 °C

Storage Comment: Upon receipt, store at -20°C or -80°C. Avoid repeated freeze.



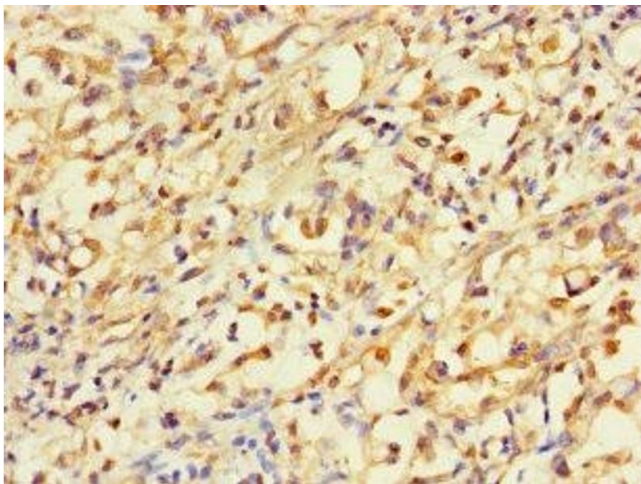
Immunohistochemistry

Image 1. Immunohistochemistry of paraffin-embedded human testis tissue using ABIN7144946 at dilution of 1:100



Immunofluorescence

Image 2. Immunofluorescent analysis of HepG2 cells using ABIN7144946 at dilution of 1:100 and Alexa Fluor 488-conjugated AffiniPure Goat Anti-Rabbit IgG(H+L)



Immunohistochemistry

Image 3. Immunohistochemistry of paraffin-embedded human gastric cancer using ABIN7144946 at dilution of 1:100

Please check the [product details page](#) for more images. Overall 4 images are available for ABIN7144946.