

Datasheet for ABIN7144958
anti-CLPP antibody (AA 223-277)



[Go to Product page](#)

2 Images

Overview

Quantity:	100 µg
Target:	CLPP
Binding Specificity:	AA 223-277
Reactivity:	Human
Host:	Rabbit
Clonality:	Polyclonal
Conjugate:	This CLPP antibody is un-conjugated
Application:	ELISA, Immunohistochemistry (IHC)

Product Details

Immunogen:	Recombinant Human ATP-dependent Clp protease proteolytic subunit, mitochondrial protein (223-277AA)
Isotype:	IgG
Cross-Reactivity:	Human
Purification:	>95%, Protein G purified

Target Details

Target:	CLPP
Alternative Name:	CLPP (CLPP Products)
Background:	Background: Protease component of the Clp complex that cleaves peptides and various

Target Details

proteins in an ATP-dependent process. Has low peptidase activity in the absence of CLPX. The Clp complex can degrade CSN1S1, CSN2 and CSN3, as well as synthetic peptides (in vitro) and may be responsible for a fairly general and central housekeeping function rather than for the degradation of specific substrates.

Aliases: ATP dependent protease ClpAP (E coli) proteolytic subunit antibody, ATP dependent protease ClpAP proteolytic subunit antibody, ATP dependent protease ClpAP proteolytic subunit human antibody, ATP dependent proteolytic subunit homolog (E coli) antibody, ATP dependent proteolytic subunit homolog antibody, Caseinolytic peptidase ATP dependent proteolytic subunit homolog antibody, Caseinolytic protease ATP dependent proteolytic subunit E coli antibody, clpP antibody, ClpP caseinolytic peptidase ATP dependent proteolytic subunit antibody, ClpP caseinolytic peptidase ATP dependent proteolytic subunit homolog antibody, CLPP_HUMAN antibody, Endopeptidase Clp antibody, mitochondrial antibody, Putative ATP dependent Clp protease proteolytic subunit mitochondrial antibody, Putative ATP dependent Clp protease proteolytic subunit antibody, Putative ATP-dependent Clp protease proteolytic subunit antibody

UniProt: [Q16740](#)

Application Details

Application Notes: Recommended dilution: IHC:1:500-1:1000,

Restrictions: For Research Use only

Handling

Format: Liquid

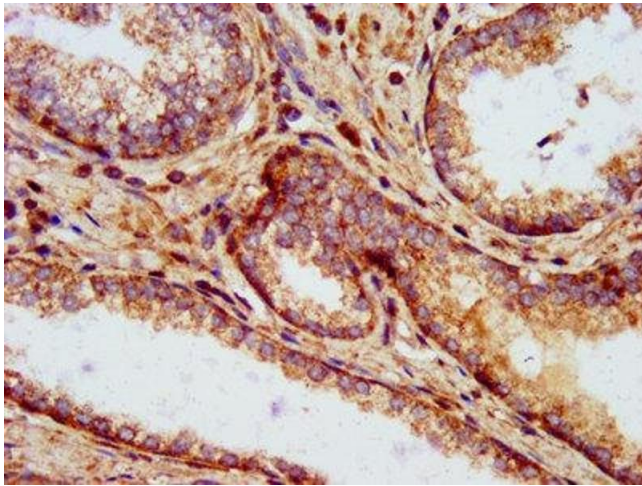
Buffer: Preservative: 0.03 % Proclin 300
Constituents: 50 % Glycerol, 0.01M PBS, pH 7.4

Preservative: ProClin

Precaution of Use: This product contains ProClin: a POISONOUS AND HAZARDOUS SUBSTANCE which should be handled by trained staff only.

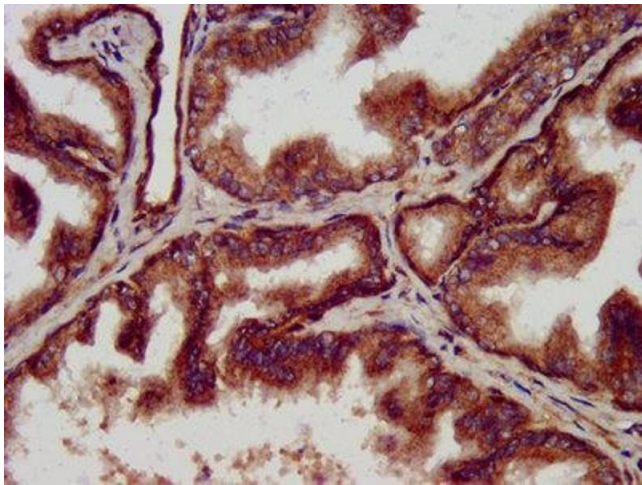
Storage: -20 °C,-80 °C

Storage Comment: Upon receipt, store at -20°C or -80°C. Avoid repeated freeze.



Immunohistochemistry

Image 1. IHC image of ABIN7144958 diluted at 1:500 and staining in paraffin-embedded human prostate cancer performed on a Leica Bond™ system. After dewaxing and hydration, antigen retrieval was mediated by high pressure in a citrate buffer (pH 6.0). Section was blocked with 10% normal goat serum 30min at RT. Then primary antibody (1% BSA) was incubated at 4°C overnight. The primary is detected by a biotinylated secondary antibody and visualized using an HRP conjugated SP system.



Immunohistochemistry

Image 2. IHC image of ABIN7144958 diluted at 1:500 and staining in paraffin-embedded human prostate tissue performed on a Leica Bond™ system. After dewaxing and hydration, antigen retrieval was mediated by high pressure in a citrate buffer (pH 6.0). Section was blocked with 10% normal goat serum 30min at RT. Then primary antibody (1% BSA) was incubated at 4°C overnight. The primary is detected by a biotinylated secondary antibody and visualized using an HRP conjugated SP system.