

Datasheet for ABIN7144963  
**anti-DDX11 antibody (AA 1-220)**

## 3 Images

[Go to Product page](#)

## Overview

Quantity:	100 µL
Target:	DDX11
Binding Specificity:	AA 1-220
Reactivity:	Human
Host:	Rabbit
Clonality:	Polyclonal
Conjugate:	This DDX11 antibody is un-conjugated
Application:	Western Blotting (WB), ELISA, Immunohistochemistry (IHC)

## Product Details

Immunogen:	Recombinant Human ATP-dependent DNA helicase DDX11 protein (1-220AA)
Isotype:	IgG
Cross-Reactivity:	Human, Mouse
Purification:	Antigen Affinity Purified

## Target Details

Target:	DDX11
Alternative Name:	DDX11 ( <a href="#">DDX11 Products</a> )
Background:	Background: DNA helicase involved in cellular proliferation. Possesses DNA-dependent ATPase and helicase activities. This helicase translocates on single-stranded DNA in the 5' to 3' direction.

## Target Details

direction in the presence of ATP and, to a lesser extent, dATP. Its unwinding activity requires a 5\'\'-single-stranded region for helicase loading, since flush-ended duplex structures do not support unwinding. The helicase activity is capable of displacing duplex regions up to 100 bp, which can be extended to 500 bp by RPA or the cohesion establishment factor, the Ctf18-RFC (replication factor C) complex activities. Stimulates the flap endonuclease activity of FEN1.

Required for normal sister chromatid cohesion. Required for recruitment of bovine papillomavirus type 1 regulatory protein E2 to mitotic chromosomes and for viral genome maintenance. Required for maintaining the chromosome segregation and is essential for embryonic development and the prevention of aneuploidy. May function during either S, G2, or M phase of the cell cycle. Binds to both single- and double-stranded DNA.

Aliases: CHL1 antibody, CHL1 related helicase gene 1 antibody, CHL1-like helicase homolog antibody, CHL1-related protein 1 antibody, CHLR1 antibody, Ddx11 antibody, DDX11\_HUMAN antibody, DEAD/H (Asp Glu Ala Asp/His) box polypeptide 11 antibody, DEAD/H (Asp-Glu-Ala-Asp/His) box helicase 11 antibody, DEAD/H (Asp-Glu-Ala-Asp/His) box polypeptide 11 (CHL1-like helicase homolog, *S. cerevisiae*) antibody, DEAD/H box antibody, DEAD/H box protein 11 antibody, hCHLR1 antibody, Keratinocyte growth factor regulated gene 2 protein antibody, Keratinocyte growth factor-regulated gene 2 protein antibody, KRG 2 antibody, KRG-2 antibody, KRG2 antibody, MGC133249 antibody, MGC9335 antibody, OTTHUMP00000238778 antibody, OTTHUMP00000238780 antibody, OTTHUMP00000238784 antibody, OTTHUMP00000238785 antibody, Probable ATP dependent RNA helicase DDX11 antibody, Probable ATP-dependent RNA helicase DDX11 antibody, WABS antibody

UniProt: [Q96FC9](#)

Pathways: [ER-Nucleus Signaling](#)

## Application Details

Application Notes: Recommended dilution: WB:1:1000-1:5000, IHC:1:20-1:200,

Restrictions: For Research Use only

## Handling

Format: Liquid

Buffer: PBS with 0.02 % sodium azide, 50 % glycerol, pH 7.3.

Preservative: Sodium azide

Precaution of Use: This product contains Sodium azide: a POISONOUS AND HAZARDOUS SUBSTANCE which

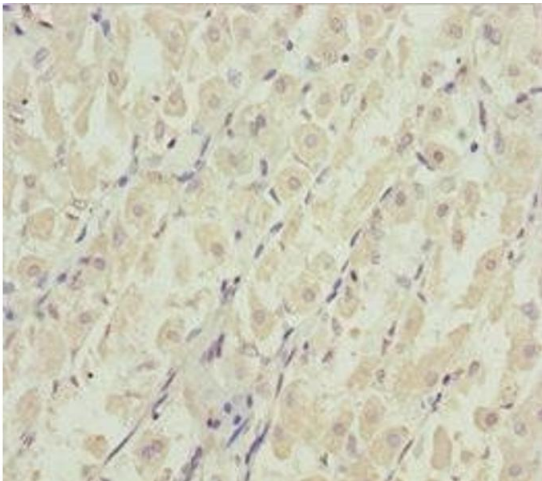
Handling

should be handled by trained staff only.

Storage: -20 °C,-80 °C

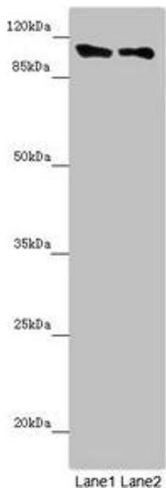
Storage Comment: Upon receipt, store at -20°C or -80°C. Avoid repeated freeze.

Images



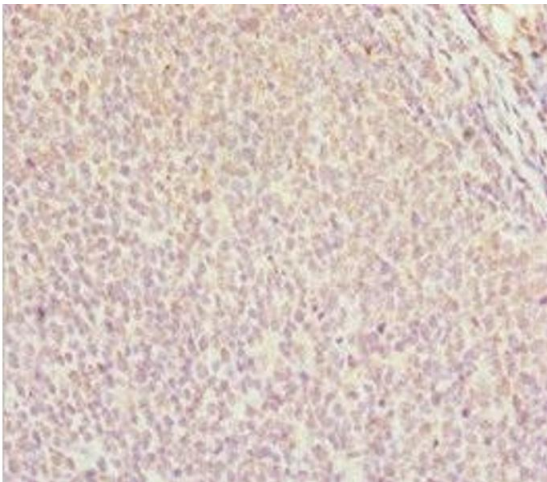
Immunohistochemistry

**Image 1.** Immunohistochemistry of paraffin-embedded human gastric cancer using ABIN7144963 at dilution of 1:100



Western Blotting

**Image 2.** Western blot All lanes: DDX11 antibody at 8.47 µg/mL Lane 1: Mouse gonadal tissue Lane 2: K562 whole cell lysate Secondary Goat polyclonal to rabbit IgG at 1/10000 dilution Predicted band size: 109, 102, 99, 97, 33 kDa Observed band size: 109 kDa



Immunohistochemistry

**Image 3.** Immunohistochemistry of paraffin-embedded human tonsil tissue using ABIN7144963 at dilution of 1:100