



[Go to Product page](#)

Datasheet for ABIN7144964  
**anti-PIF1 antibody (AA 125-360)**

2 Images

### Overview

Quantity:	100 µg
Target:	PIF1
Binding Specificity:	AA 125-360
Reactivity:	Human
Host:	Rabbit
Clonality:	Polyclonal
Conjugate:	This PIF1 antibody is un-conjugated
Application:	ELISA, Immunohistochemistry (IHC)

### Product Details

Immunogen:	Recombinant Human ATP-dependent DNA helicase PIF1 protein (125-360AA)
Isotype:	IgG
Cross-Reactivity:	Human
Purification:	>95%, Protein G purified

### Target Details

Target:	PIF1
Alternative Name:	PIF1 ( <a href="#">PIF1 Products</a> )
Background:	Background: DNA-dependent ATPase and 5'→3' DNA helicase required for the maintenance of both mitochondrial and nuclear genome stability. Efficiently unwinds G-quadruplex (G4) DNA

## Target Details

---

structures and forked RNA-DNA hybrids. Resolves G4 structures, preventing replication pausing and double-strand breaks (DSBs) at G4 motifs. Involved in the maintenance of telomeric DNA. Inhibits telomere elongation, de novo telomere formation and telomere addition to DSBs via catalytic inhibition of telomerase. Reduces the processivity of telomerase by displacing active telomerase from DNA ends. Releases telomerase by unwinding the short telomerase RNA/telomeric DNA hybrid that is the intermediate in the telomerase reaction. Possesses an intrinsic strand annealing activity.

Aliases: ATP dependent DNA helicase PIF1 antibody, ATP-dependent DNA helicase PIF1 antibody, C15orf20 antibody, DNA helicase homolog PIF1 antibody, DNA helicase PIF1 antibody, DNA repair and recombination helicase PIF1 antibody, Petite integration frequency 1 antibody, PIF antibody, PIF1 5' to 3' DNA helicase antibody, PIF1 5' to 3' DNA helicase homolog antibody, PIF1 antibody, PIF1 DNA helicase antibody, PIF1/RRM3 DNA helicase like protein antibody, PIF1/RRM3 DNA helicase-like protein antibody, PIF1\_HUMAN antibody

---

UniProt: [Q9H611](#)

## Application Details

---

Application Notes: Recommended dilution: IHC:1:20-1:200,

Restrictions: For Research Use only

## Handling

---

Format: Liquid

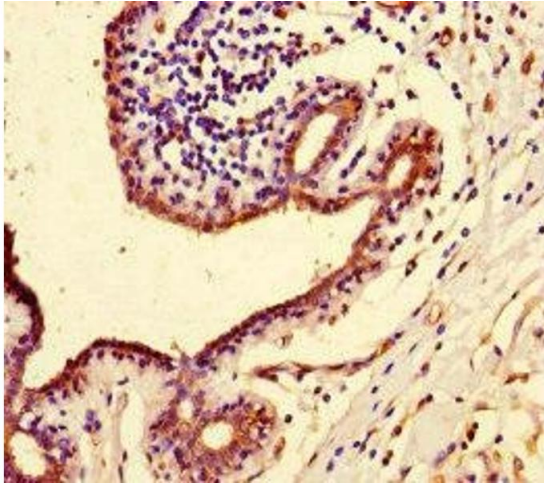
Buffer: Preservative: 0.03 % Proclin 300  
Constituents: 50 % Glycerol, 0.01M PBS, PH 7.4

Preservative: ProClin

Precaution of Use: This product contains ProClin: a POISONOUS AND HAZARDOUS SUBSTANCE which should be handled by trained staff only.

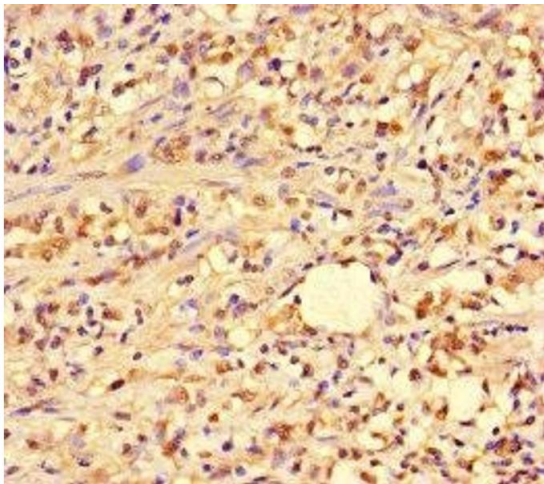
Storage: -20 °C,-80 °C

Storage Comment: Upon receipt, store at -20°C or -80°C. Avoid repeated freeze.



#### Immunohistochemistry

**Image 1.** Immunohistochemistry of paraffin-embedded human breast cancer using ABIN7144964 at dilution of 1:100



#### Immunohistochemistry

**Image 2.** Immunohistochemistry of paraffin-embedded human gastric cancer using ABIN7144964 at dilution of 1:100