

Datasheet for ABIN7144968
anti-RECQL4 antibody (AA 200-337)[Go to Product page](#)

3 Images

Overview

Quantity:	100 µg
Target:	RECQL4
Binding Specificity:	AA 200-337
Reactivity:	Human
Host:	Rabbit
Clonality:	Polyclonal
Conjugate:	This RECQL4 antibody is un-conjugated
Application:	Western Blotting (WB), ELISA, Immunofluorescence (IF), Immunohistochemistry (IHC)

Product Details

Immunogen:	Recombinant Human ATP-dependent DNA helicase Q4 protein (200-337AA)
Isotype:	IgG
Cross-Reactivity:	Human
Purification:	>95%, Protein G purified

Target Details

Target:	RECQL4
Alternative Name:	RECQL4 (RECQL4 Products)
Background:	Background: DNA-dependent ATPase. May modulate chromosome segregation. Aliases: ATP dependent DNA helicase Q4 antibody, ATP-dependent DNA helicase Q4 antibody,

Target Details

DNA helicase antibody, DNA helicase, RecQ like type 4 antibody, RECQ 4 antibody, RECQ L4 antibody, RecQ protein 4 antibody, RecQ protein like 4 antibody, RecQ protein-like 4 antibody, RecQ-like type 4 antibody, RecQ4 antibody, RECQ4_HUMAN antibody, RECQL 4 antibody, RECQL4 antibody, RTS antibody

UniProt: [O94761](#)

Pathways: [Chromatin Binding](#)

Application Details

Application Notes: Recommended dilution: WB:1:500-1:5000, IHC:1:500-1:1000, IF:1:50-1:200,

Restrictions: For Research Use only

Handling

Format: Liquid

Buffer: Preservative: 0.03 % Proclin 300
Constituents: 50 % Glycerol, 0.01M PBS, pH 7.4

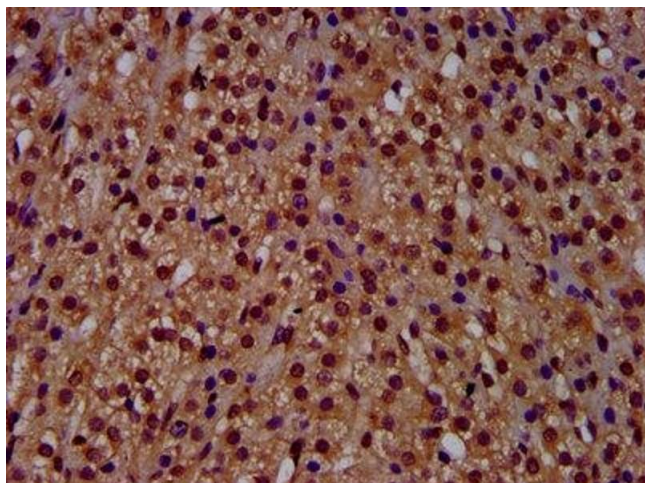
Preservative: ProClin

Precaution of Use: This product contains ProClin: a POISONOUS AND HAZARDOUS SUBSTANCE which should be handled by trained staff only.

Storage: -20 °C,-80 °C

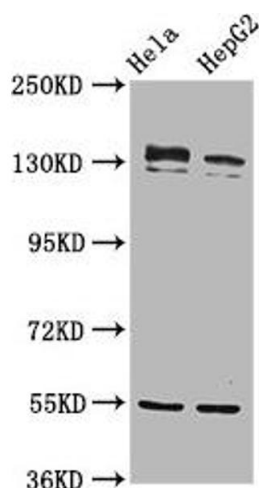
Storage Comment: Upon receipt, store at -20°C or -80°C. Avoid repeated freeze.

Images



Immunohistochemistry

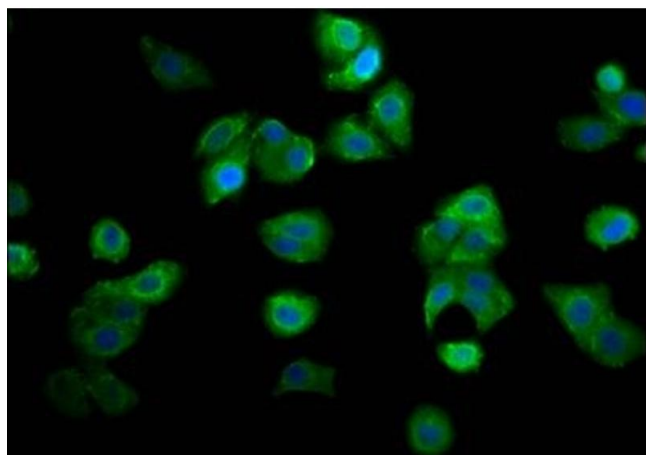
Image 1. IHC image of ABIN7144968 diluted at 1:500 and staining in paraffin-embedded human adrenal gland tissue performed on a Leica Bond™ system. After dewaxing and hydration, antigen retrieval was mediated by high pressure in a citrate buffer (pH 6.0). Section was blocked with 10% normal goat serum 30min at RT. Then primary antibody (1% BSA) was incubated at 4°C overnight. The primary is detected by a biotinylated secondary antibody and



visualized using an HRP conjugated SP system.

Western Blotting

Image 2. Western Blot Positive WB detected in: HeLa whole cell lysate, HepG2 whole cell lysate. All lanes: RECQL4 antibody at 4.8 µg/mL. Secondary Goat polyclonal to rabbit IgG at 1/50000 dilution. Predicted band size: 134 kDa. Observed band size: 134 kDa.



Immunofluorescence

Image 3. Immunofluorescence staining of HepG2 cells with ABIN7144968 at 1:166, counter-stained with DAPI. The cells were fixed in 4% formaldehyde, permeabilized using 0.2% Triton X-100 and blocked in 10% normal Goat Serum. The cells were then incubated with the antibody overnight at 4°C. The secondary antibody was Alexa Fluor 488-conjugated AffiniPure Goat Anti-Rabbit IgG(H+L).