

Datasheet for ABIN7145003
anti-DHX36 antibody (AA 68-181)[Go to Product page](#)

1 Image

Overview

Quantity:	100 µg
Target:	DHX36
Binding Specificity:	AA 68-181
Reactivity:	Human
Host:	Rabbit
Clonality:	Polyclonal
Conjugate:	This DHX36 antibody is un-conjugated
Application:	ELISA, Immunofluorescence (IF)

Product Details

Immunogen:	Recombinant Human ATP-dependent RNA helicase DHX36 protein (68-181AA)
Isotype:	IgG
Cross-Reactivity:	Human
Purification:	>95%, Protein G purified

Target Details

Target:	DHX36
Alternative Name:	DHX36 (DHX36 Products)
Background:	Background: Proposed to have a global role in regulating mRNA expression including transcriptional regulation and mRNA stability. Binds with high affinity to and resolves

Target Details

tetramolecular RNA and DNA quadruplex structures. Unwinds intramolecular quadruplexes derived from the ZIC1 and the MYC promoters. Binds to quadruplex structures in the promoters of YY1 and ALPL genes and regulates their expression. Binds to telomerase RNA template component (TERC) 5'-end (nucleotides 1-43) and unwinds an internal quadruplex formation in TERC 5'-end to promote P1 helix formation, the P1 helix acts as a template boundary ensuring accurate reverse transcription and is disrupted by quadruplex formation. May be involved in regulation of telomere length. Plays a role in degradation and deadenylation of mRNAs containing in their 3'-UTR the consensus ARE sequence element. May function in sex development and spermatogenesis. May play a role in ossification.

Aliases: DDX36 antibody, DEAH box protein 36 antibody, Dhx36 antibody, DHX36_HUMAN antibody, EC 3.6.1.- antibody, KIAA1488 antibody, MLE like protein 1 antibody, MLE-like protein 1 antibody, MLEL1 antibody, Probable ATP dependent RNA helicase DHX36 antibody, Probable ATP-dependent RNA helicase DHX36 antibody, RHAU antibody, RNA helicase associated with AU rich element ARE antibody, RNA helicase associated with AU-rich element ARE antibody

UniProt: [Q9H2U1](#)

Pathways: [Toll-Like Receptors Cascades](#)

Application Details

Application Notes: Recommended dilution: IF:1:50-1:200,

Restrictions: For Research Use only

Handling

Format: Liquid

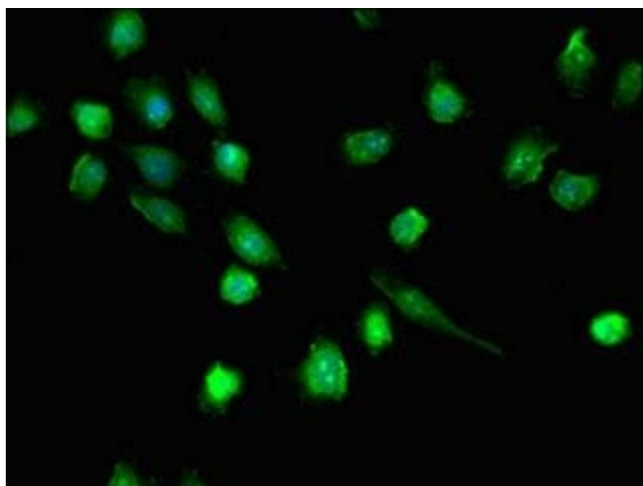
Buffer: Preservative: 0.03 % Proclin 300
Constituents: 50 % Glycerol, 0.01M PBS, PH 7.4

Preservative: ProClin

Precaution of Use: This product contains ProClin: a POISONOUS AND HAZARDOUS SUBSTANCE which should be handled by trained staff only.

Storage: -20 °C,-80 °C

Storage Comment: Upon receipt, store at -20°C or -80°C. Avoid repeated freeze.



Immunofluorescence

Image 1. Immunofluorescent analysis of U251 cells using ABIN7145003 at dilution of 1:100 and Alexa Fluor 488-conjugated AffiniPure Goat Anti-Rabbit IgG(H+L)