



Datasheet for ABIN7145007
anti-SUPV3L1 antibody (AA 499-786)



[Go to Product page](#)

2 Images

Overview

Quantity:	100 µL
Target:	SUPV3L1
Binding Specificity:	AA 499-786
Reactivity:	Human
Host:	Rabbit
Clonality:	Polyclonal
Conjugate:	This SUPV3L1 antibody is un-conjugated
Application:	Western Blotting (WB), ELISA, Immunohistochemistry (IHC)

Product Details

Immunogen:	Recombinant Human ATP-dependent RNA helicase SUPV3L1, mitochondrial protein (499-786AA)
Isotype:	IgG
Cross-Reactivity:	Human
Purification:	>95%, Protein G purified

Target Details

Target:	SUPV3L1
Alternative Name:	SUPV3L1 (SUPV3L1 Products)
Background:	Background: Major helicase player in mitochondrial RNA metabolism. Component of the

Target Details

mitochondrial degradosome (mtEXO) complex, that degrades 3' overhang double-stranded RNA with a 3'-to-5' directionality in an ATP-dependent manner. ATPase and ATP-dependent multisubstrate helicase, able to unwind double-stranded (ds) DNA and RNA, and RNA/DNA heteroduplexes in the 5'-to-3' direction. Plays a role in the RNA surveillance system in mitochondria, regulates the stability of mature mRNAs, the removal of aberrantly formed mRNAs and the rapid degradation of non coding processing intermediates. Also implicated in recombination and chromatin maintenance pathways. May protect cells from apoptosis. Associates with mitochondrial DNA.

Aliases: 6330443E10Rik antibody, ATP dependent RNA helicase SUPV3L1, mitochondrial antibody, ATP-dependent RNA helicase SUPV3L1 antibody, EC 3.6.1. antibody, MGC109049 antibody, mitochondrial antibody, OTTHUMP00000019719 antibody, S. Cerevisiae suppressor of var 1 3 like 1 antibody, suppressor of var1 (S.cerevisiae) 3 like 1 antibody, Suppressor of var1 3 like 1 (S. cerevisiae) antibody, Suppressor of var1 3 like 1 (S. cerevisiae)(SUV3) antibody, Suppressor of var1 3 like 1 antibody, Suppressor of var1 3 like protein 1 antibody, Suppressor of var1 3-like protein 1 antibody, SUPV 3 L 1 antibody, SUPV3L1 antibody, SUV 3 antibody, SUV 3 L 1 antibody, SUV3 antibody, SUV3 like protein 1 antibody, SUV3-like protein 1 antibody, SUV3_HUMAN antibody, SUV3L1 antibody

UniProt: [Q8IYB8](#)

Application Details

Application Notes: Recommended dilution: WB:1:1000-1:5000, IHC:1:200-1:500,

Restrictions: For Research Use only

Handling

Format: Liquid

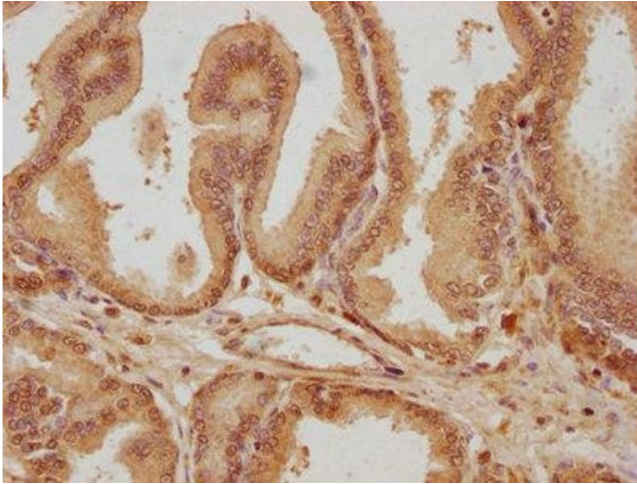
Buffer: Preservative: 0.03 % Proclin 300
Constituents: 50 % Glycerol, 0.01M PBS, pH 7.4

Preservative: ProClin

Precaution of Use: This product contains ProClin: a POISONOUS AND HAZARDOUS SUBSTANCE which should be handled by trained staff only.

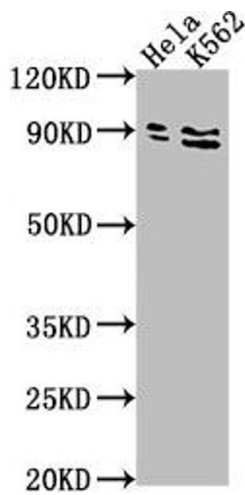
Storage: -20 °C,-80 °C

Storage Comment: Upon receipt, store at -20°C or -80°C. Avoid repeated freeze.



Immunohistochemistry

Image 1. IHC image of ABIN7145007 diluted at 1:300 and staining in paraffin-embedded human prostate tissue performed on a Leica Bond™ system. After dewaxing and hydration, antigen retrieval was mediated by high pressure in a citrate buffer (pH 6.0). Section was blocked with 10 % normal goat serum 30 min at RT. Then primary antibody (1 % BSA) was incubated at 4 °C overnight. The primary is detected by a biotinylated secondary antibody and visualized using an HRP conjugated SP system.



Western Blotting

Image 2. Western Blot Positive WB detected in: HeLa whole cell lysate, K562 whole cell lysate All lanes: SUPV3L1 antibody at 1:2000 Secondary Goat polyclonal to rabbit IgG at 1/50000 dilution Predicted band size: 88 kDa Observed band size: 88 kDa