

Datasheet for ABIN7145021  
**anti-KCNJ11 antibody (AA 172-390)**[Go to Product page](#)

## 2 Images

## Overview

Quantity:	100 µg
Target:	KCNJ11
Binding Specificity:	AA 172-390
Reactivity:	Human
Host:	Rabbit
Clonality:	Polyclonal
Conjugate:	This KCNJ11 antibody is un-conjugated
Application:	Western Blotting (WB), ELISA, Immunohistochemistry (IHC)

## Product Details

Immunogen:	Recombinant Human ATP-sensitive inward rectifier potassium channel 11 protein (172-390AA)
Isotype:	IgG
Cross-Reactivity:	Human, Mouse
Purification:	>95%, Protein G purified

## Target Details

Target:	KCNJ11
Alternative Name:	KCNJ11 ( <a href="#">KCNJ11 Products</a> )
Background:	Background: This receptor is controlled by G proteins. Inward rectifier potassium channels are characterized by a greater tendency to allow potassium to flow into the cell rather than out of it.

## Target Details

Their voltage dependence is regulated by the concentration of extracellular potassium, as external potassium is raised, the voltage range of the channel opening shifts to more positive voltages. The inward rectification is mainly due to the blockage of outward current by internal magnesium. Can be blocked by extracellular barium. Subunit of ATP-sensitive potassium channels (KATP). Can form cardiac and smooth muscle-type KATP channels with ABCC9. KCNJ11 forms the channel pore while ABCC9 is required for activation and regulation. Aliases: KCNJ11 antibody, ATP-sensitive inward rectifier potassium channel 11 antibody, IKATP antibody, Inward rectifier K(+) channel Kir6.2 antibody, Potassium channel antibody, inwardly rectifying subfamily J member 11 antibody

UniProt: [Q14654](#)

Pathways: [Negative Regulation of Hormone Secretion](#)

## Application Details

Application Notes: Recommended dilution: WB:1:500-1:5000, IHC:1:20-1:200,

Restrictions: For Research Use only

## Handling

Format: Liquid

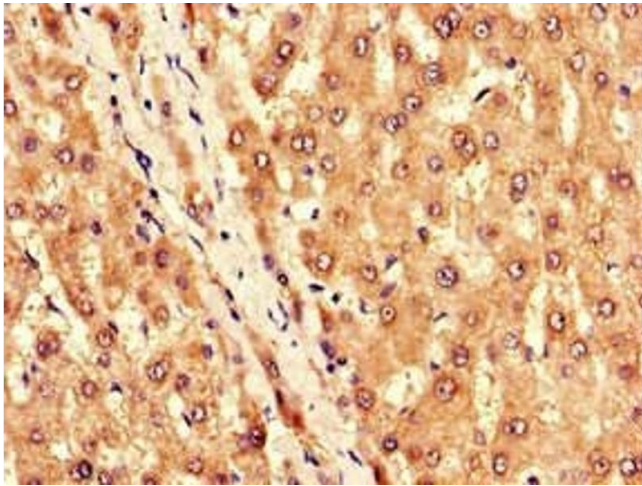
Buffer: Preservative: 0.03 % Proclin 300  
Constituents: 50 % Glycerol, 0.01M PBS, PH 7.4

Preservative: ProClin

Precaution of Use: This product contains ProClin: a POISONOUS AND HAZARDOUS SUBSTANCE which should be handled by trained staff only.

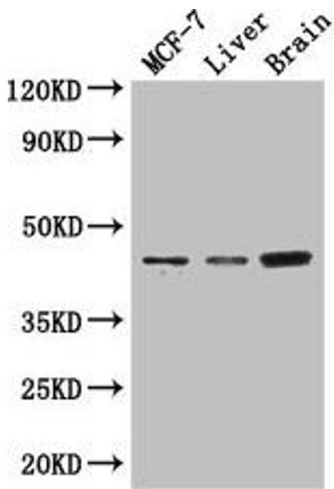
Storage: -20 °C,-80 °C

Storage Comment: Upon receipt, store at -20°C or -80°C. Avoid repeated freeze.



### Immunohistochemistry

**Image 1.** Immunohistochemistry of paraffin-embedded human liver tissue using ABIN7145021 at dilution of 1:100



### Western Blotting

**Image 2.** Western Blot Positive WB detected in: MCF-7 whole cell lysate, Mouse liver tissue, Mouse brain tissue All lanes: KCNJ11 antibody at 3 µg/mL Secondary Goat polyclonal to rabbit IgG at 1/50000 dilution Predicted band size: 44, 34 kDa Observed band size: 44 kDa