

Datasheet for ABIN7145033
anti-ASNA1 antibody (AA 1-348)[Go to Product page](#)

2 Images

Overview

Quantity:	100 µL
Target:	ASNA1
Binding Specificity:	AA 1-348
Reactivity:	Human
Host:	Rabbit
Clonality:	Polyclonal
Conjugate:	This ASNA1 antibody is un-conjugated
Application:	ELISA, Immunohistochemistry (IHC), Immunofluorescence (IF)

Product Details

Immunogen:	Recombinant Human ATPase ASNA1 protein (1-348AA)
Isotype:	IgG
Cross-Reactivity:	Human
Purification:	Antigen Affinity Purified

Target Details

Target:	ASNA1
Alternative Name:	ASNA1 (ASNA1 Products)
Background:	Background: ATPase required for the post-translational delivery of tail-anchored (TA) proteins to the endoplasmic reticulum. Recognizes and selectively binds the transmembrane domain of

Target Details

TA proteins in the cytosol. This complex then targets to the endoplasmic reticulum by membrane-bound receptors, where the tail-anchored protein is released for insertion. This process is regulated by ATP binding and hydrolysis. ATP binding drives the homodimer towards the closed dimer state, facilitating recognition of newly synthesized TA membrane proteins. ATP hydrolysis is required for insertion. Subsequently, the homodimer reverts towards the open dimer state, lowering its affinity for the membrane-bound receptor, and returning it to the cytosol to initiate a new round of targeting (By similarity). May be involved in insulin signaling.

Aliases: ARSA 1 antibody, ARSA antibody, ArsA arsenite transporter ATP binding homolog 1 antibody, ArsA arsenite transporter, ATP binding, E. coli, homolog of, 1 antibody, ArsA arsenite transporter, ATP-binding, homolog 1 (bacterial) antibody, ARSA I antibody, ARSA-I antibody, ARSA1 antibody, ARSAI antibody, Arsenical pump driving ATPase antibody, Arsenical pump-driving ATPase antibody, Arsenical resistance ATPase antibody, Arsenite translocating ATPase antibody, Arsenite transporting ATPase antibody, Arsenite-stimulated ATPase antibody, ASNA 1 antibody, ASNA I antibody, ASNA-I antibody, ASNA_HUMAN antibody, ASNA1 antibody, Asna1 protein antibody, ASNAI antibody, ATPase ASNA1 antibody, GET3 antibody, Golgi to ER traffic 3 homolog antibody, hARSA-I antibody, hASNA-I antibody, MGC3821 antibody, Transmembrane domain recognition complex 40 kDa ATPase subunit antibody, Transmembrane domain recognition complex, 40 kDa antibody, TRC40 antibody

UniProt: [O43681](#)

Pathways: [Positive Regulation of Peptide Hormone Secretion](#)

Application Details

Application Notes: Recommended dilution: IHC:1:20-1:200, IF:1:50-1:200,

Restrictions: For Research Use only

Handling

Format: Liquid

Buffer: PBS with 0.02 % sodium azide, 50 % glycerol, pH 7.3.

Preservative: Sodium azide

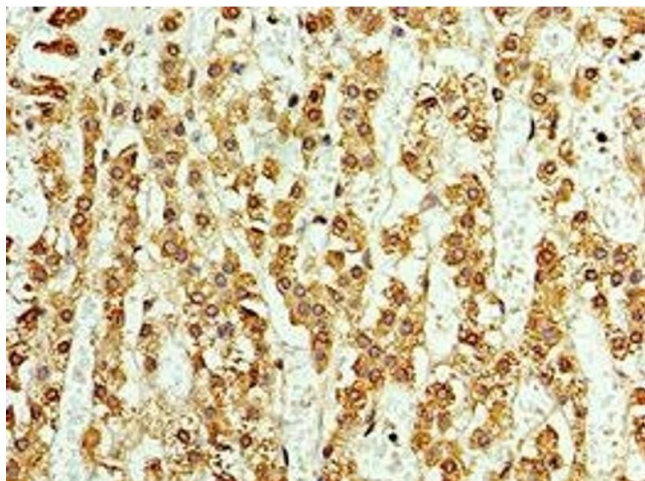
Precaution of Use: This product contains Sodium azide: a POISONOUS AND HAZARDOUS SUBSTANCE which should be handled by trained staff only.

Storage: -20 °C, -80 °C

Handling

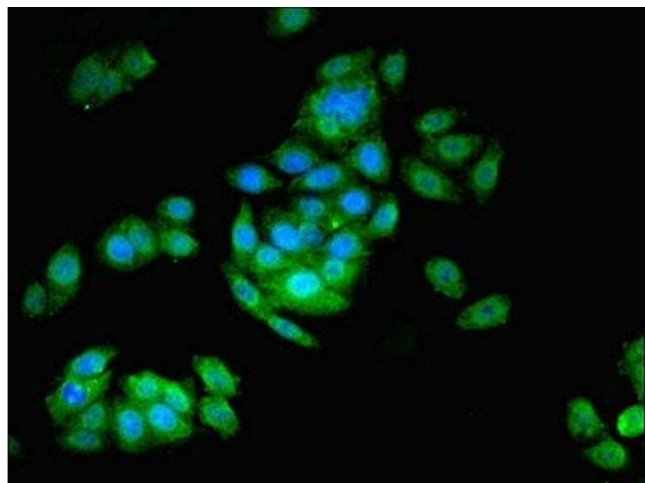
Storage Comment: Upon receipt, store at -20°C or -80°C. Avoid repeated freeze.

Images



Immunohistochemistry

Image 1. Immunohistochemistry of paraffin-embedded human adrenal gland tissue using ABIN7145033 at dilution of 1:100



Immunofluorescence

Image 2. Immunofluorescent analysis of HepG2 cells using ABIN7145033 at dilution of 1:100 and Alexa Fluor 488-conjugated AffiniPure Goat Anti-Rabbit IgG(H+L)