



[Go to Product page](#)

Datasheet for ABIN7145034  
**anti-ATAD1 antibody (AA 289-350)**

2 Images

### Overview

Quantity:	100 µg
Target:	ATAD1
Binding Specificity:	AA 289-350
Reactivity:	Human
Host:	Rabbit
Clonality:	Polyclonal
Conjugate:	This ATAD1 antibody is un-conjugated
Application:	ELISA, Western Blotting (WB), Immunohistochemistry (IHC)

### Product Details

Immunogen:	Recombinant Human ATPase family AAA domain-containing protein 1 protein (289-350AA)
Isotype:	IgG
Cross-Reactivity:	Human, Mouse, Rat
Purification:	>95%, Protein G purified

### Target Details

Target:	ATAD1
Alternative Name:	ATAD1 ( <a href="#">ATAD1 Products</a> )
Background:	Background: ATPase that plays a critical role in regulating the surface expression of AMPA receptors (AMPA), thereby regulating synaptic plasticity and learning and memory. Required

## Target Details

---

for NMDA-stimulated AMPAR internalization and inhibition of GRIA1 and GRIA2 recycling back to the plasma membrane, these activities are ATPase-dependent (By similarity).

Aliases: 4921525H23Rik antibody, AAA+ ATPase Thorase antibody, Ab2-088 antibody, AFDC1 antibody, Atad1 antibody, ATAD1\_HUMAN antibody, ATPase family AAA domain containing protein 1 antibody, ATPase family AAA domain-containing protein 1 antibody, ATPase family, AAA domain containing 1 antibody, ATPase Thorase antibody, AW107648 antibody, FLJ14600 antibody, FNP001 antibody, Thorase antibody

---

UniProt: [Q8NBU5](#)

---

Pathways: [Synaptic Membrane](#)

## Application Details

---

Application Notes: Recommended dilution: WB:1:500-1:5000, IHC:1:20-1:200,

---

Restrictions: For Research Use only

## Handling

---

Format: Liquid

---

Buffer: Preservative: 0.03 % Proclin 300  
Constituents: 50 % Glycerol, 0.01M PBS, pH 7.4

---

Preservative: ProClin

---

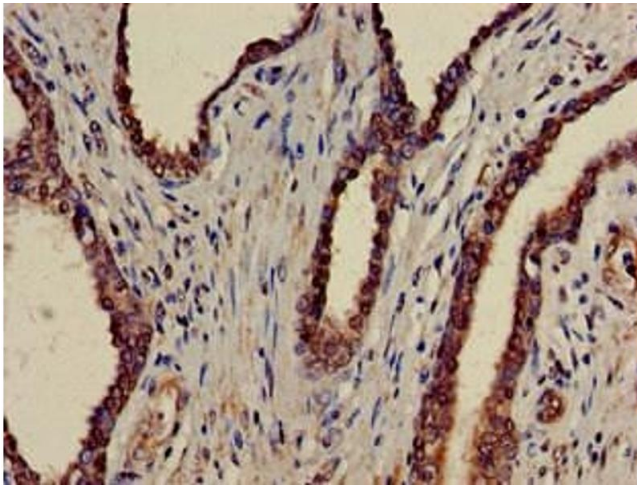
Precaution of Use: This product contains ProClin: a POISONOUS AND HAZARDOUS SUBSTANCE which should be handled by trained staff only.

---

Storage: -20 °C,-80 °C

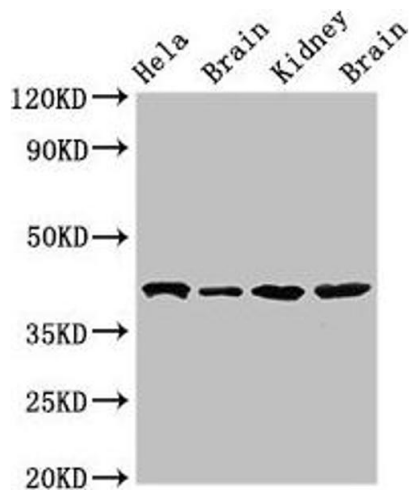
---

Storage Comment: Upon receipt, store at -20°C or -80°C. Avoid repeated freeze.



### Immunohistochemistry

**Image 1.** Immunohistochemistry of paraffin-embedded human prostate cancer using ABIN7145034 at dilution of 1:100



### Western Blotting

**Image 2.** Western Blot Positive WB detected in: HeLa whole cell lysate, Rat brain tissue, Mouse kidney tissue, Mouse brain tissue All lanes: ATAD1 antibody at 4  $\mu$ g/mL Secondary Goat polyclonal to rabbit IgG at 1/50000 dilution Predicted band size: 41, 33 kDa Observed band size: 41 kDa