

Datasheet for ABIN7145083
anti-Aurora Kinase C antibody (AA 12-143)[Go to Product page](#)

4 Images

Overview

Quantity:	100 µg
Target:	Aurora Kinase C (AURKC)
Binding Specificity:	AA 12-143
Reactivity:	Human
Host:	Rabbit
Clonality:	Polyclonal
Conjugate:	This Aurora Kinase C antibody is un-conjugated
Application:	Western Blotting (WB), ELISA, Immunofluorescence (IF), Immunohistochemistry (IHC)

Product Details

Immunogen:	Recombinant Human Aurora kinase C protein (12-143AA)
Isotype:	IgG
Cross-Reactivity:	Human
Purification:	>95%, Protein G purified

Target Details

Target:	Aurora Kinase C (AURKC)
Alternative Name:	AURKC (AURKC Products)
Background:	Background: Serine/threonine-protein kinase component of the chromosomal passenger complex (CPC), a complex that acts as a key regulator of mitosis. The CPC complex has

Target Details

essential functions at the centromere in ensuring correct chromosome alignment and segregation and is required for chromatin-induced microtubule stabilization and spindle assembly. Plays also a role in meiosis and more particularly in spermatogenesis. Has redundant cellular functions with AURKB and can rescue an AURKB knockdown. Like AURKB, AURKC phosphorylates histone H3 at '\\Ser-10\\' and '\\Ser-28\\'. AURKC phosphorylates the CPC complex subunits BIRC5/survivin and INCENP leading to increased AURKC activity. Phosphorylates TACC1, another protein involved in cell division, at '\\Ser-228\\'.

Aliases: AURKC antibody, AIE 2 antibody, Aie1 antibody, AIE2 antibody, AIK 3 antibody, AIK3 antibody, ARK 3 antibody, ARK-3 antibody, ARK3 antibody, Aur C antibody, AurC antibody, Aurkc antibody, AURKC_HUMAN antibody, aurora 3 antibody, Aurora C antibody, Aurora kinase C antibody, aurora related kinase 3 antibody, Aurora-related kinase 3 antibody, Aurora/Ipl1 related kinase 3 antibody, Aurora/Ipl1-related kinase 3 antibody, Aurora/Ipl1/Eg2 protein 2 antibody, EC 2.7.11.1 antibody, Serine threonine protein kinase 13 antibody, serine/threonine kinase 13 (aurora/IPL1 like) antibody, serine/threonine protein kinase aurora C antibody, Serine/threonine-protein kinase 13 antibody, Serine/threonine-protein kinase aurora-C antibody, SPGF5 antibody, STK13 antibody

UniProt: [Q9UQB9](#)

Pathways: [Cell Division Cycle](#), [Maintenance of Protein Location](#)

Application Details

Application Notes: Recommended dilution: WB:1:500-1:5000, IHC:1:20-1:200, IF:1:50-1:200,

Restrictions: For Research Use only

Handling

Format: Liquid

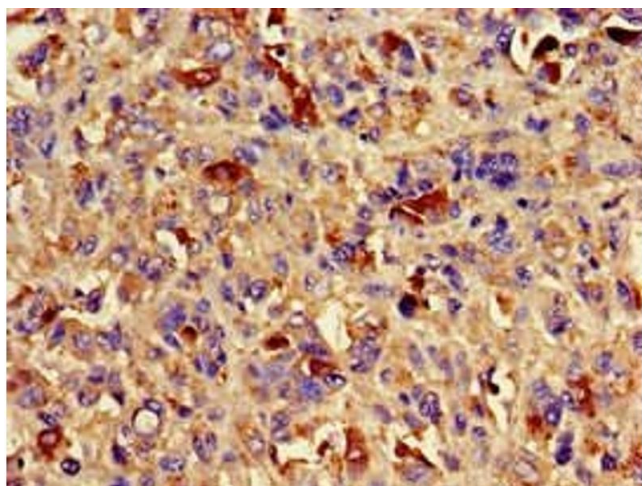
Buffer: Preservative: 0.03 % Proclin 300
Constituents: 50 % Glycerol, 0.01M PBS, pH 7.4

Preservative: ProClin

Precaution of Use: This product contains ProClin: a POISONOUS AND HAZARDOUS SUBSTANCE which should be handled by trained staff only.

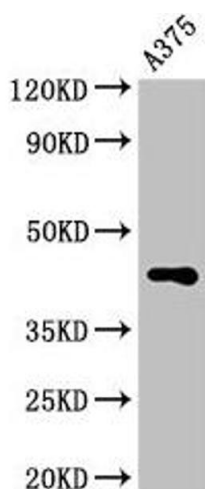
Storage: -20 °C,-80 °C

Storage Comment: Upon receipt, store at -20°C or -80°C. Avoid repeated freeze.



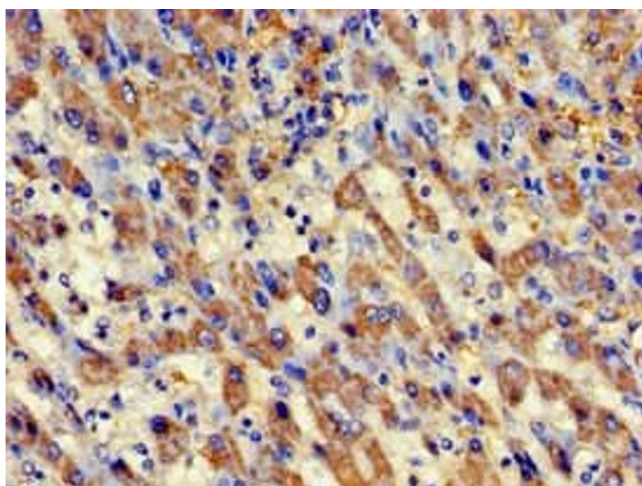
Immunohistochemistry

Image 1. Immunohistochemistry of paraffin-embedded human melanoma using ABIN7145083 at dilution of 1:100



Western Blotting

Image 2. Western Blot Positive WB detected in: A375 whole cell lysate All lanes: AURKC antibody at 3.2 µg/mL Secondary Goat polyclonal to rabbit IgG at 1/50000 dilution Predicted band size: 36, 33, 34 kDa Observed band size: 45 kDa



Immunohistochemistry

Image 3. Immunohistochemistry of paraffin-embedded human liver cancer using ABIN7145083 at dilution of 1:100

Please check the [product details page](#) for more images. Overall 4 images are available for ABIN7145083.