

Datasheet for ABIN7145091
anti-ATG5 antibody (AA 5-272)



[Go to Product page](#)

3 Images

Overview

Quantity:	100 µg
Target:	ATG5
Binding Specificity:	AA 5-272
Reactivity:	Human
Host:	Rabbit
Clonality:	Polyclonal
Conjugate:	This ATG5 antibody is un-conjugated
Application:	ELISA, Immunohistochemistry (IHC), Immunofluorescence (IF)

Product Details

Immunogen:	Recombinant Human Autophagy protein 5 protein (5-272AA)
Isotype:	IgG
Cross-Reactivity:	Human
Purification:	>95%, Protein G purified

Target Details

Target:	ATG5
Alternative Name:	ATG5 (ATG5 Products)
Background:	Background: Involved in autophagic vesicle formation. Conjugation with ATG12, through a ubiquitin-like conjugating system involving ATG7 as an E1-like activating enzyme and ATG10 as

Target Details

an E2-like conjugating enzyme, is essential for its function. The ATG12-ATG5 conjugate acts as an E3-like enzyme which is required for lipidation of ATG8 family proteins and their association to the vesicle membranes. Involved in mitochondrial quality control after oxidative damage, and in subsequent cellular longevity. The ATG12-ATG5 conjugate also negatively regulates the innate antiviral immune response by blocking the type I IFN production pathway through direct association with RARRES3 and MAVS. Also plays a role in translation or delivery of incoming viral RNA to the translation apparatus. Plays a critical role in multiple aspects of lymphocyte development and is essential for both B and T lymphocyte survival and proliferation. Required for optimal processing and presentation of antigens for MHC II. Involved in the maintenance of axon morphology and membrane structures, as well as in normal adipocyte differentiation. Promotes primary ciliogenesis through removal of OFD1 from centriolar satellites and degradation of IFT20 via the autophagic pathway.

Aliases: APG 5 antibody, APG 5L antibody, APG5 antibody, APG5 autophagy 5 like antibody, APG5 like antibody, APG5-like antibody, APG5L antibody, Apoptosis specific protein antibody, Apoptosis-specific protein antibody, ASP antibody, ATG 5 antibody, Atg5 antibody, ATG5 autophagy related 5 homolog antibody, ATG5_HUMAN antibody, Autophagy protein 5 antibody, Autophagy related 5 antibody, hAPG5 antibody, Homolog of S Cerevisiae autophagy 5 antibody, OTTHUMP00000040507 antibody

UniProt:	Q9H1Y0
Pathways:	Activation of Innate immune Response , Production of Molecular Mediator of Immune Response , Autophagy

Application Details

Application Notes:	Recommended dilution: IHC:1:20-1:200, IF:1:50-1:200,
Restrictions:	For Research Use only

Handling

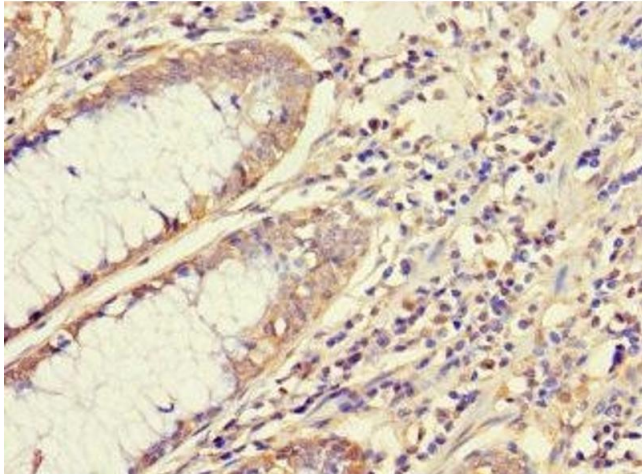
Format:	Liquid
Buffer:	Preservative: 0.03 % Proclin 300 Constituents: 50 % Glycerol, 0.01M PBS, PH 7.4
Preservative:	ProClin
Precaution of Use:	This product contains ProClin: a POISONOUS AND HAZARDOUS SUBSTANCE which should be handled by trained staff only.

Handling

Storage: -20 °C, -80 °C

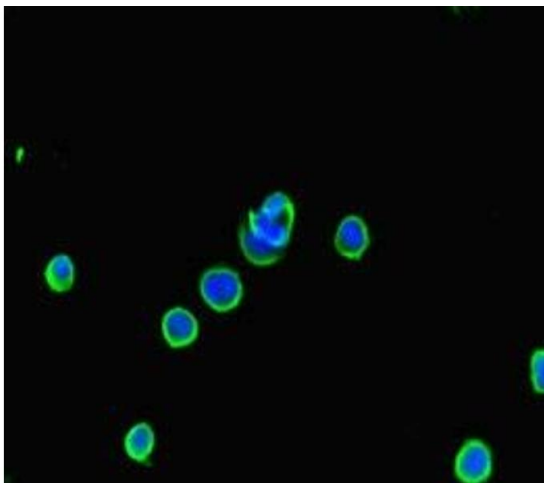
Storage Comment: Upon receipt, store at -20°C or -80°C. Avoid repeated freeze.

Images



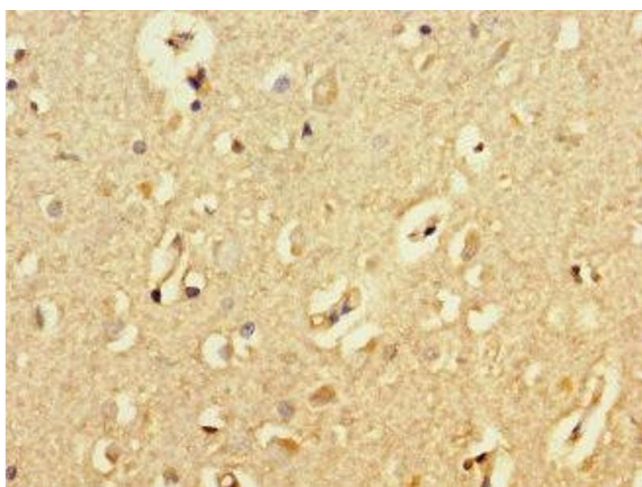
Immunohistochemistry

Image 1. Immunohistochemistry of paraffin-embedded human colon cancer using ABIN7145091 at dilution of 1:100



Immunofluorescence

Image 2. Immunofluorescent analysis of MCF-7 cells using ABIN7145091 at dilution of 1:100 and Alexa Fluor 488-conjugated AffiniPure Goat Anti-Rabbit IgG(H+L)



Immunohistochemistry

Image 3. Immunohistochemistry of paraffin-embedded human brain tissue using ABIN7145091 at dilution of 1:100