



[Go to Product page](#)

Datasheet for ABIN7145109

## anti-ATG16L2 antibody (AA 262-348)

### 3 Images

#### Overview

Quantity:	100 µg
Target:	ATG16L2
Binding Specificity:	AA 262-348
Reactivity:	Human
Host:	Rabbit
Clonality:	Polyclonal
Conjugate:	This ATG16L2 antibody is un-conjugated
Application:	ELISA, Immunohistochemistry (IHC), Immunofluorescence (IF)

#### Product Details

Immunogen:	Recombinant Human Autophagy-related protein 16-2 protein (262-348AA)
Isotype:	IgG
Cross-Reactivity:	Human
Purification:	>95%, Protein G purified

#### Target Details

Target:	ATG16L2
Alternative Name:	ATG16L2 ( <a href="#">ATG16L2 Products</a> )
Background:	Background: May play a role in autophagy. Aliases: A16L2_HUMAN antibody, APG16-like 2 antibody, ATG16 autophagy related 16-like 2

## Target Details

antibody, ATG16B antibody, Atg16l2 antibody, autophagy related 16-like 2 (*S. cerevisiae*) antibody, Autophagy-related protein 16-2 antibody, WD repeat-containing protein 80 antibody, WDR80 antibody

UniProt: [Q8NAA4](#)

## Application Details

Application Notes: Recommended dilution: IHC:1:500-1:1000, IF:1:50-1:200,

Restrictions: For Research Use only

## Handling

Format: Liquid

Buffer: Preservative: 0.03 % Proclin 300  
Constituents: 50 % Glycerol, 0.01M PBS, PH 7.4

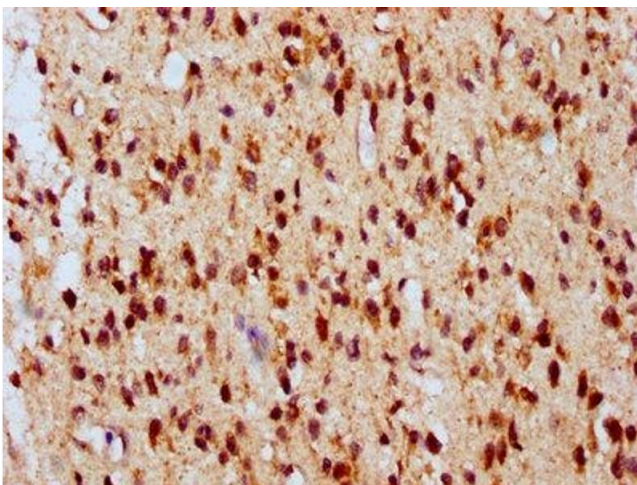
Preservative: ProClin

Precaution of Use: This product contains ProClin: a POISONOUS AND HAZARDOUS SUBSTANCE which should be handled by trained staff only.

Storage: -20 °C,-80 °C

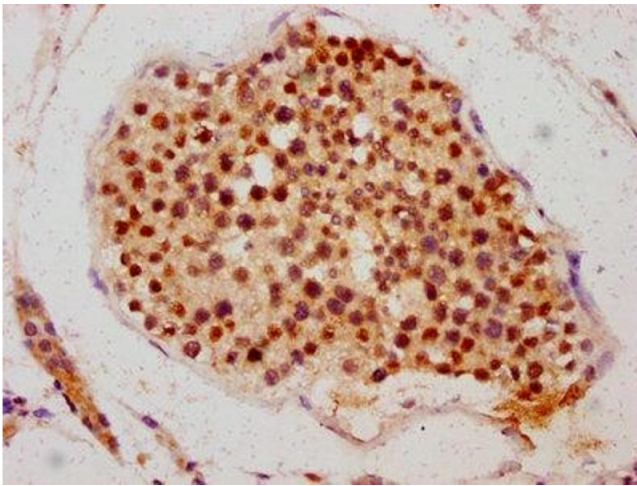
Storage Comment: Upon receipt, store at -20°C or -80°C. Avoid repeated freeze.

## Images



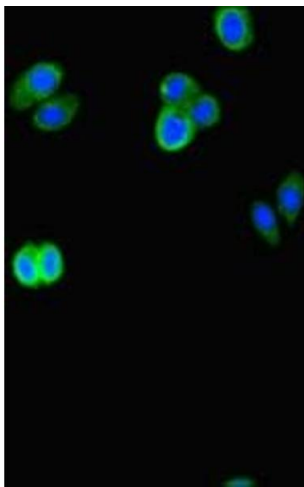
### Immunohistochemistry

**Image 1.** IHC image of ABIN7145109 diluted at 1:700 and staining in paraffin-embedded human glioma performed on a Leica Bond™ system. After dewaxing and hydration, antigen retrieval was mediated by high pressure in a citrate buffer (pH 6.0). Section was blocked with 10% normal goat serum 30min at RT. Then primary antibody (1% BSA) was incubated at 4°C overnight. The primary is detected by a biotinylated secondary antibody and visualized using an HRP conjugated SP system.



### Immunohistochemistry

**Image 2.** IHC image of ABIN7145109 diluted at 1:700 and staining in paraffin-embedded human testis tissue performed on a Leica Bond™ system. After dewaxing and hydration, antigen retrieval was mediated by high pressure in a citrate buffer (pH 6.0). Section was blocked with 10% normal goat serum 30min at RT. Then primary antibody (1% BSA) was incubated at 4°C overnight. The primary is detected by a biotinylated secondary antibody and visualized using an HRP conjugated SP system.



### Immunofluorescence

**Image 3.** Immunofluorescent analysis of HepG2 cells using ABIN7145109 at dilution of 1:100 and Alexa Fluor 488-conjugated AffiniPure Goat Anti-Rabbit IgG(H+L)