

Datasheet for ABIN7145118
anti-ATG9B antibody (AA 715-924)



[Go to Product page](#)

2 Images

Overview

Quantity:	100 µL
Target:	ATG9B
Binding Specificity:	AA 715-924
Reactivity:	Human
Host:	Rabbit
Clonality:	Polyclonal
Conjugate:	This ATG9B antibody is un-conjugated
Application:	ELISA, Immunohistochemistry (IHC)

Product Details

Immunogen:	Recombinant Human Autophagy-related protein 9B protein (715-924AA)
Isotype:	IgG
Cross-Reactivity:	Human
Purification:	Antigen Affinity Purified

Target Details

Target:	ATG9B
Alternative Name:	ATG9B (ATG9B Products)
Background:	Background: Involved in autophagy and cytoplasm to vacuole transport (Cvt) vesicle formation. Plays a key role in the organization of the preautophagosomal structure/phagophore assembly

Target Details

site (PAS), the nucleating site for formation of the sequestering vesicle (By similarity).

Aliases: APG9 like 2 antibody, APG9-like 2 antibody, Apg912 antibody, APG9L2 antibody, Apgdc2 antibody, ATG9 autophagy related 9 homolog B (S. cerevisiae) antibody, Atg9b antibody, ATG9B_HUMAN antibody, Autophagy 9 like 2 protein antibody, Autophagy related protein 9B antibody, Autophagy-related protein 9B antibody, Endothelial nitric oxide synthase antisense antibody, eONE antibody, Gm574 antibody, Nitric oxide synthase 3 antisense antibody, Nitric oxide synthase 3 overlapping antisense gene protein antibody, Nitric oxide synthase 3-overlapping antisense gene protein antibody, NOS3AS antibody, Protein sONE antibody, SONE antibody

UniProt: [Q674R7](#)

Application Details

Application Notes: Recommended dilution: IHC:1:20-1:200,

Restrictions: For Research Use only

Handling

Format: Liquid

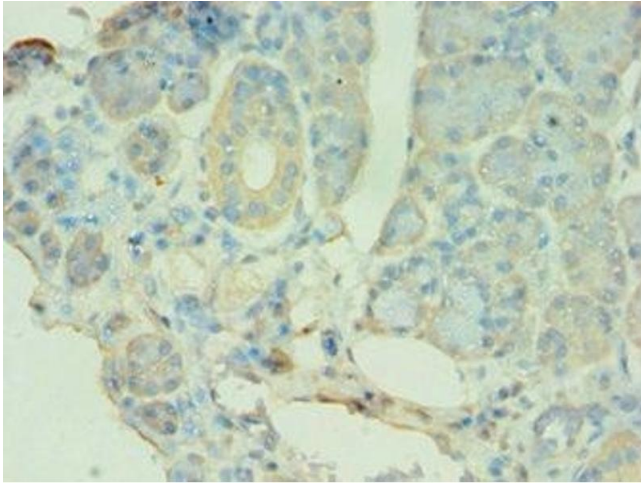
Buffer: PBS with 0.02 % sodium azide, 50 % glycerol, pH 7.3.

Preservative: Sodium azide

Precaution of Use: This product contains Sodium azide: a POISONOUS AND HAZARDOUS SUBSTANCE which should be handled by trained staff only.

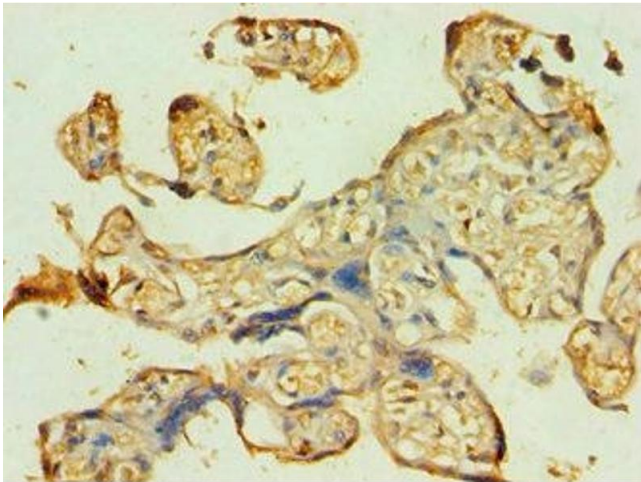
Storage: -20 °C,-80 °C

Storage Comment: Upon receipt, store at -20°C or -80°C. Avoid repeated freeze.



Immunohistochemistry

Image 1. Immunohistochemistry of paraffin-embedded human pancreatic tissue using ABIN7145118 at dilution of 1:100



Immunohistochemistry

Image 2. Immunohistochemistry of paraffin-embedded human placenta tissue using ABIN7145118 at dilution of 1:100