

Datasheet for ABIN7145162
anti-BCL3 antibody (AA 362-454)[Go to Product page](#)

3 Images

Overview

Quantity:	100 µg
Target:	BCL3
Binding Specificity:	AA 362-454
Reactivity:	Human
Host:	Rabbit
Clonality:	Polyclonal
Conjugate:	This BCL3 antibody is un-conjugated
Application:	Western Blotting (WB), ELISA, Immunohistochemistry (IHC), Immunofluorescence (IF)

Product Details

Immunogen:	Recombinant Human B-cell lymphoma 3 protein (362-454AA)
Isotype:	IgG
Cross-Reactivity:	Human, Mouse
Purification:	>95%, Protein G purified

Target Details

Target:	BCL3
Alternative Name:	BCL3 (BCL3 Products)
Background:	Background: Contributes to the regulation of transcriptional activation of NF-kappa-B target genes. In the cytoplasm, inhibits the nuclear translocation of the NF-kappa-B p50 subunit. In the

Target Details

nucleus, acts as transcriptional activator that promotes transcription of NF-kappa-B target genes. Contributes to the regulation of cell proliferation (By similarity).

Aliases: B cell CLL/lymphoma 3 antibody, B cell leukemia/lymphoma 3 antibody, B cell lymphoma 3 encoded protein antibody, B-cell lymphoma 3 protein antibody, Bcl 3 antibody, BCL 4 antibody, BCL-3 antibody, Bcl3 antibody, BCL3_HUMAN antibody, BCL4 antibody, Chronic lymphatic leukemia protein antibody, D19S37 antibody, Protein Bcl 3 antibody, Proto-oncogene BCL3 antibody

UniProt: [P20749](#)

Pathways: [NF-kappaB Signaling](#), [Maintenance of Protein Location](#), [Protein targeting to Nucleus](#)

Application Details

Application Notes: Recommended dilution: WB:1:500-1:5000, IHC:1:20-1:200, IF:1:50-1:200,

Restrictions: For Research Use only

Handling

Format: Liquid

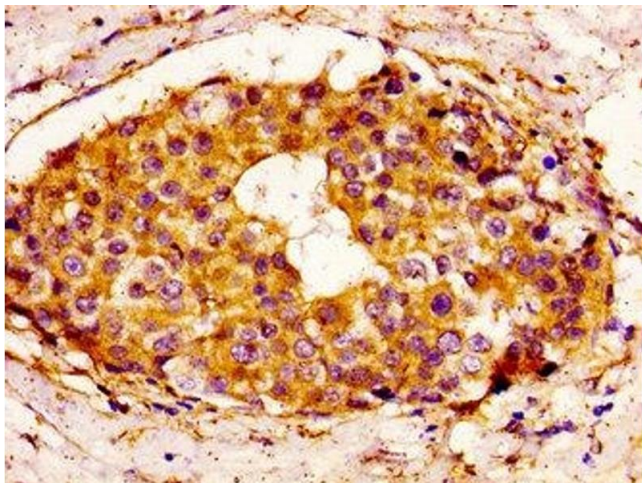
Buffer: Preservative: 0.03 % Proclin 300
Constituents: 50 % Glycerol, 0.01M PBS, pH 7.4

Preservative: ProClin

Precaution of Use: This product contains ProClin: a POISONOUS AND HAZARDOUS SUBSTANCE which should be handled by trained staff only.

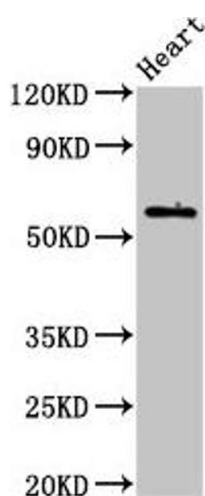
Storage: -20 °C,-80 °C

Storage Comment: Upon receipt, store at -20°C or -80°C. Avoid repeated freeze.



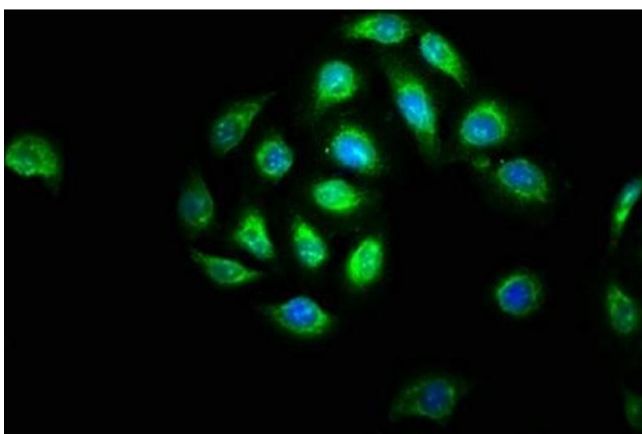
Immunohistochemistry

Image 1. IHC image of ABIN7145162 diluted at 1:100 and staining in paraffin-embedded human breast cancer performed on a Leica Bond™ system. After dewaxing and hydration, antigen retrieval was mediated by high pressure in a citrate buffer (pH 6.0). Section was blocked with 10 % normal goat serum 30 min at RT. Then primary antibody (1 % BSA) was incubated at 4 °C overnight. The primary is detected by a biotinylated secondary antibody and visualized using an HRP conjugated SP system.



Western Blotting

Image 2. Western Blot Positive WB detected in: Mouse heart tissue All lanes: BCL3 antibody at 3.2 µg/mL Secondary Goat polyclonal to rabbit IgG at 1/50000 dilution Predicted band size: 48 kDa Observed band size: 60 kDa



Immunofluorescence

Image 3. Immunofluorescence staining of A549 cells with ABIN7145162 at 1:133, counter-stained with DAPI. The cells were fixed in 4 % formaldehyde, permeabilized using 0.2 % Triton X-100 and blocked in 10 % normal Goat Serum. The cells were then incubated with the antibody overnight at 4 °C. The secondary antibody was Alexa Fluor 488-conjugated AffiniPure Goat Anti-Rabbit IgG(H+L).