



[Go to Product page](#)

Datasheet for ABIN7145167  
**anti-Cyclin D1 antibody (AA 1-233)**

3 Images

### Overview

Quantity:	100 µL
Target:	Cyclin D1 (CCND1)
Binding Specificity:	AA 1-233
Reactivity:	Human
Host:	Rabbit
Clonality:	Polyclonal
Conjugate:	This Cyclin D1 antibody is un-conjugated
Application:	Western Blotting (WB), ELISA, Immunohistochemistry (IHC)

### Product Details

Immunogen:	Recombinant Human B-cell lymphoma/leukemia 10 protein (1-233AA)
Isotype:	IgG
Cross-Reactivity:	Human, Mouse
Purification:	Antigen Affinity purified

### Target Details

Target:	Cyclin D1 (CCND1)
Alternative Name:	BCL1 ( <a href="#">CCND1 Products</a> )
Background:	Background: Promotes apoptosis, pro-caspase-9 maturation and activation of NF-kappa-B via NIK and IKK. May be an adapter protein between upstream TNFR1-TRADD-RIP complex and

## Target Details

---

the downstream NIK-IKK-IKAP complex. Is a substrate for MALT1.

Aliases: AI132454 antibody, B cell CLL/lymphoma 10 antibody, B cell lymphoma/leukemia10 antibody, B-cell CLL/lymphoma 10 antibody, B-cell leukemia/lymphoma 10 antibody, B-cell lymphoma/leukemia 10 antibody, Bcl 10 antibody, Bcl-10 antibody, Bcl10 antibody, BCL10\_HUMAN antibody, c E10 antibody, c-E10 antibody, C81403 antibody, CARD containing apoptotic signaling protein antibody, CARD containing molecule enhancing NF kappa B antibody, CARD containing molecule enhancing NF kB antibody, CARD containing molecule enhancing NF-kB antibody, CARD containing molecule enhancing NFkB antibody, CARD containing proapoptotic protein antibody, CARD like apoptotic protein antibody, CARD-containing apoptotic signaling protein antibody, CARD-containing molecule enhancing NF-kappa-B antibody, CARD-containing proapoptotic protein antibody, CARD-like apoptotic protein antibody, CARMEN antibody, Caspase recruiting domain containing protein antibody, caspase-recruiting domain-containing protein antibody, cCARMEN antibody, cE 10 antibody, cE10 antibody, CED 3/ICH 1 prodomain homologous E10 like regulator antibody, CED-3/ICH-1 prodomain homologous E10-like regulator antibody, CED3/ICH1 prodomain homologous E10 like regulator antibody, Cellular E10 antibody, Cellular homolog of vCARMEN antibody, Cellular E10 antibody, CIPER antibody, CLAP antibody, hCLAP antibody, Mammalian CARD containing adapter molecule E10 antibody, Mammalian CARD-containing adapter molecule E10 antibody, mE 10 antibody, mE10 antibody, R-RCD1 antibody

---

UniProt: [O95999](#)

---

Pathways: [PI3K-Akt Signaling](#), [Cell Division Cycle](#), [Mitotic G1-G1/S Phases](#), [ER-Nucleus Signaling](#)

## Application Details

---

Application Notes: Recommended dilution: WB:1:500-1:2000, IHC:1:20-1:200,

---

Restrictions: For Research Use only

## Handling

---

Format: Liquid

---

Buffer: PBS with 0.02 % sodium azide, 50 % glycerol, pH 7.3.

---

Preservative: Sodium azide

---

Precaution of Use: This product contains Sodium azide: a POISONOUS AND HAZARDOUS SUBSTANCE which should be handled by trained staff only.

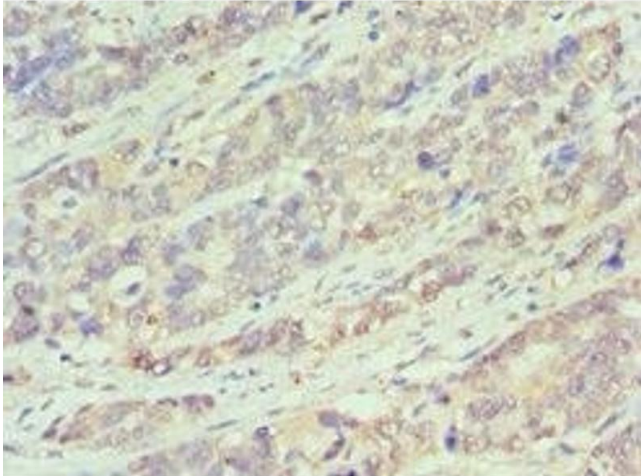
---

## Handling

Storage: -20 °C,-80 °C

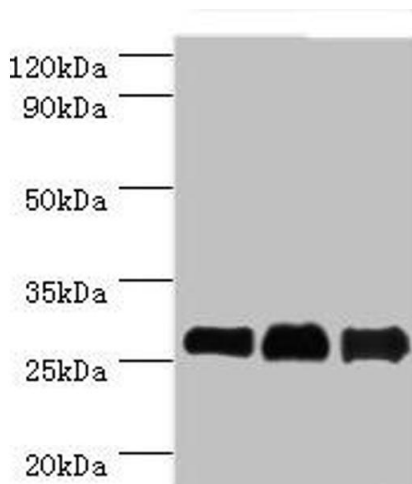
Storage Comment: Upon receipt, store at -20°C or -80°C. Avoid repeated freeze.

## Images



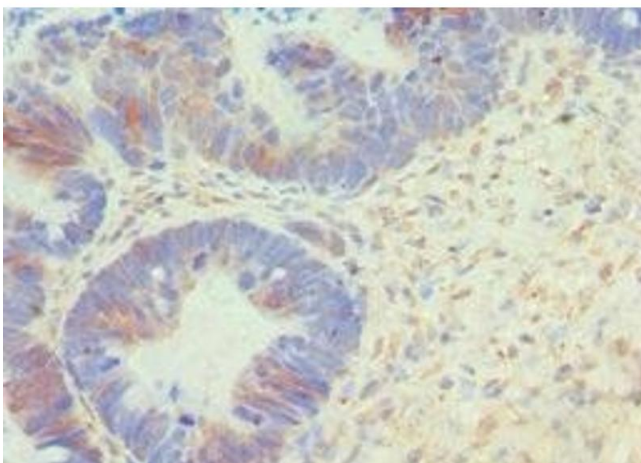
### Immunohistochemistry

**Image 1.** Immunohistochemistry of paraffin-embedded human endometrial cancer using ABIN7145167 at dilution of 1:100



### Western Blotting

**Image 2.** Western blot All lanes: B-cell lymphoma/leukemia 10 antibody at 9 µg/mL Lane 1: Mouse gonad tissue Lane 2: MCF-7 whole cell lysate Lane 3: NIH/3T3 whole cell lysate Secondary Goat polyclonal to rabbit IgG at 1/10000 dilution Predicted band size: 26 kDa Observed band size: 26 kDa



### Immunohistochemistry

**Image 3.** Immunohistochemistry of paraffin-embedded human ovarian cancer using ABIN7145167 at dilution of 1:100