



[Go to Product page](#)

Datasheet for ABIN7145178
anti-BCAP31 antibody (AA 2-243)

5 Images

Overview

Quantity:	100 µg
Target:	BCAP31
Binding Specificity:	AA 2-243
Reactivity:	Human
Host:	Rabbit
Clonality:	Polyclonal
Conjugate:	This BCAP31 antibody is un-conjugated
Application:	Western Blotting (WB), ELISA, Immunohistochemistry (IHC), Immunofluorescence (IF), Immunoprecipitation (IP)

Product Details

Immunogen:	Recombinant Human B-cell receptor-associated protein 31 protein (2-243AA)
Isotype:	IgG
Cross-Reactivity:	Human, Mouse, Rat
Purification:	>95%, Protein G purified

Target Details

Target:	BCAP31
Alternative Name:	BCAP31 (BCAP31 Products)
Background:	Background: Functions as a chaperone protein. Is one of the most abundant endoplasmic

Target Details

reticulum (ER) proteins. Plays a role in the export of secreted proteins in the ER, the recognition of abnormally folded protein and their targeting to the ER associated-degradation (ERAD). Also serves as a cargo receptor for the export of transmembrane proteins. May be involved in CASP8-mediated apoptosis.

Aliases: 6C6 AG antibody, 6C6 AG tumor associated antigen antibody, 6C6-AG tumor-associated antigen antibody, 6C6AG antibody, 6C6AG tumor associated antigen antibody, Accessory protein BAP 31 antibody, Accessory protein BAP31 antibody, B cell receptor associated protein 31 antibody, B-cell receptor-associated protein 31 antibody, BA31 antibody, BAP 31 antibody, Bap31 antibody, BAP31_HUMAN antibody, BCAP 31 antibody, BCAP31 antibody, BCR associated protein Bap 31 antibody, BCR associated protein Bap31 antibody, BCR-associated protein 31 antibody, CDM antibody, CDM protein antibody, DXS1357E antibody, MS950 antibody, p28 antibody, p28 Bap31 antibody, Protein CDM antibody, RP23-329M9.5 antibody

UniProt: [P51572](#)

Pathways: [Positive Regulation of Endopeptidase Activity](#)

Application Details

Application Notes: Recommended dilution: WB:1:1000-1:5000, IHC:1:1000-1:2000, IF:1:200-1:500, IP:1:200-1:2000,

Restrictions: For Research Use only

Handling

Format: Liquid

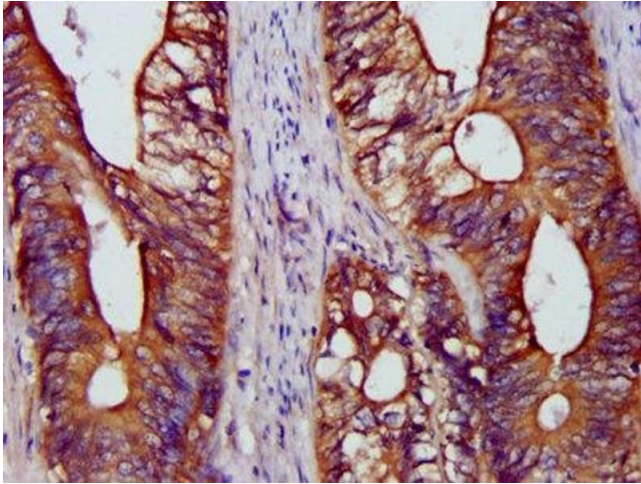
Buffer: Preservative: 0.03 % Proclin 300
Constituents: 50 % Glycerol, 0.01M PBS, PH 7.4

Preservative: ProClin

Precaution of Use: This product contains ProClin: a POISONOUS AND HAZARDOUS SUBSTANCE which should be handled by trained staff only.

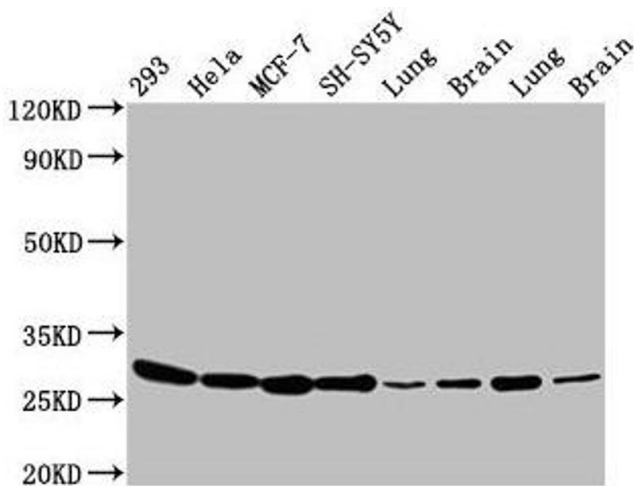
Storage: -20 °C,-80 °C

Storage Comment: Upon receipt, store at -20°C or -80°C. Avoid repeated freeze.



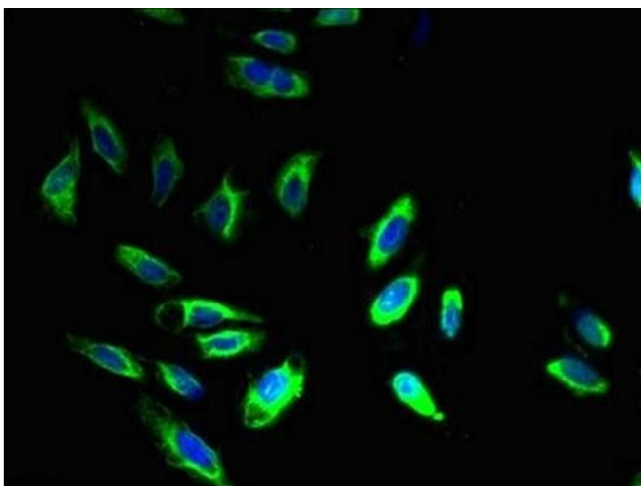
Immunohistochemistry

Image 1. IHC image of ABIN7145178 diluted at 1:1200 and staining in paraffin-embedded human colon cancer performed on a Leica Bond™ system. After dewaxing and hydration, antigen retrieval was mediated by high pressure in a citrate buffer (pH 6.0). Section was blocked with 10% normal goat serum 30min at RT. Then primary antibody (1% BSA) was incubated at 4°C overnight. The primary is detected by a biotinylated secondary antibody and visualized using an HRP conjugated SP system.



Western Blotting

Image 2. Western Blot Positive WB detected in: 293 whole cell lysate, HeLa whole cell lysate, MCF-7 whole cell lysate, SH-SY5Y whole cell lysate, Rat lung tissue, Rat brain tissue, Mouse lung tissue, Mouse brain tissue. All lanes: BCAP31 antibody at 4.8 µg/mL. Secondary Goat polyclonal to rabbit IgG at 1/50000 dilution. Predicted band size: 28, 35 kDa. Observed band size: 28 kDa.



Immunofluorescence

Image 3. Immunofluorescence staining of HeLa cells with ABIN7145178 at 1:400, counter-stained with DAPI. The cells were fixed in 4% formaldehyde, permeabilized using 0.2% Triton X-100 and blocked in 10% normal Goat Serum. The cells were then incubated with the antibody overnight at 4°C. The secondary antibody was Alexa Fluor 488-conjugated AffiniPure Goat Anti-Rabbit IgG(H+L).

Please check the [product details page](#) for more images. Overall 5 images are available for ABIN7145178.