



[Go to Product page](#)

Datasheet for ABIN7145190  
**anti-BPI antibody (AA 149-362)**

2 Images

Overview

Quantity:	100 µg
Target:	BPI
Binding Specificity:	AA 149-362
Reactivity:	Human
Host:	Rabbit
Clonality:	Polyclonal
Conjugate:	This BPI antibody is un-conjugated
Application:	Western Blotting (WB), ELISA, Immunofluorescence (IF)

Product Details

Immunogen:	Recombinant Human Bactericidal permeability-increasing protein (149-362AA)
Isotype:	IgG
Cross-Reactivity:	Human
Purification:	>95%, Protein G purified

Target Details

Target:	BPI
Alternative Name:	BPI ( <a href="#">BPI Products</a> )
Background:	Background: The cytotoxic action of BPI is limited to many species of Gram-negative bacteria, this specificity may be explained by a strong affinity of the very basic N-terminal half for the

## Target Details

---

negatively charged lipopolysaccharides that are unique to the Gram-negative bacterial outer envelope. Has antibacterial activity against the Gram-negative bacterium *P.aeruginosa*, this activity is inhibited by LPS from *P.aeruginosa*.

Aliases: Bactericidal permeability-increasing protein antibody, Bactericidal/permeability increasing protein antibody, BPI antibody, BPI fold containing family D, member 1 antibody, BPI\_HUMAN antibody, BPIFD1 antibody, CAP 57 antibody, CAP57 antibody, rBPI antibody, Recombinant BPI holoprotein, rBPI antibody

---

UniProt: [P17213](#)

## Application Details

---

Application Notes: Recommended dilution: WB:1:500-1:5000, IF:1:50-1:200,

Restrictions: For Research Use only

## Handling

---

Format: Liquid

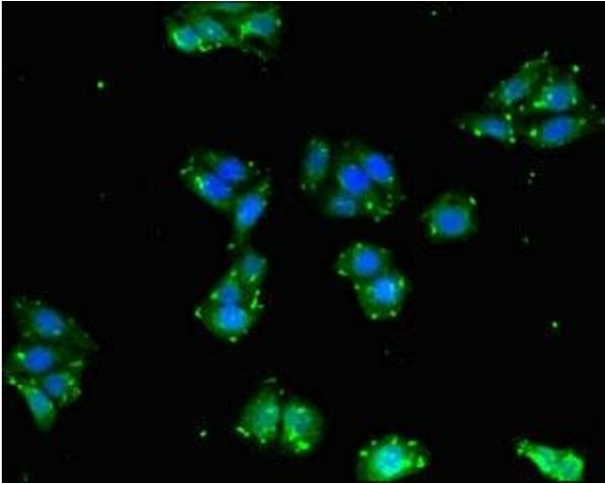
Buffer: Preservative: 0.03 % Proclin 300  
Constituents: 50 % Glycerol, 0.01M PBS, PH 7.4

Preservative: ProClin

Precaution of Use: This product contains ProClin: a POISONOUS AND HAZARDOUS SUBSTANCE which should be handled by trained staff only.

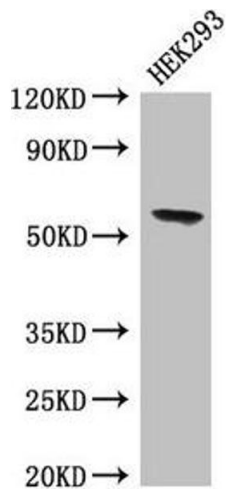
Storage: -20 °C,-80 °C

Storage Comment: Upon receipt, store at -20°C or -80°C. Avoid repeated freeze.



### Immunofluorescence

**Image 1.** Immunofluorescent analysis of HepG2 cells using ABIN7145190 at dilution of 1:100 and Alexa Fluor 488-conjugated AffiniPure Goat Anti-Rabbit IgG(H+L)



### Western Blotting

**Image 2.** Western Blot Positive WB detected in: HEK293 whole cell lysate All lanes: BPI antibody at 4 µg/mL Secondary Goat polyclonal to rabbit IgG at 1/50000 dilution Predicted band size: 54 kDa Observed band size: 54 kDa