

Datasheet for ABIN7145231
anti-BBS1 antibody (AA 217-417)[Go to Product page](#)

4 Images

Overview

Quantity:	100 µg
Target:	BBS1
Binding Specificity:	AA 217-417
Reactivity:	Human
Host:	Rabbit
Clonality:	Polyclonal
Conjugate:	This BBS1 antibody is un-conjugated
Application:	ELISA, Western Blotting (WB), Immunohistochemistry (IHC), Immunofluorescence (IF)

Product Details

Immunogen:	Recombinant Human Bardet-Biedl syndrome 1 protein (217-417AA)
Isotype:	IgG
Cross-Reactivity:	Human, Mouse
Purification:	>95%, Protein G purified

Target Details

Target:	BBS1
Alternative Name:	BBS1 (BBS1 Products)
Background:	Background: The BBSome complex is thought to function as a coat complex required for sorting of specific membrane proteins to the primary cilia. The BBSome complex is required for

Target Details

ciliogenesis but is dispensable for centriolar satellite function. This ciliogenic function is mediated in part by the Rab8 GDP/GTP exchange factor, which localizes to the basal body and contacts the BBSome. Rab8(GTP) enters the primary cilium and promotes extension of the ciliary membrane. Firstly the BBSome associates with the ciliary membrane and binds to RAB3IP/Rabin8, the guanosyl exchange factor (GEF) for Rab8 and then the Rab8-GTP localizes to the cilium and promotes docking and fusion of carrier vesicles to the base of the ciliary membrane. The BBSome complex, together with the LTZL1, controls SMO ciliary trafficking and contributes to the sonic hedgehog (SHH) pathway regulation. Required for proper BBSome complex assembly and its ciliary localization.

Aliases: AI451249 antibody, Bardet-Biedl syndrome 1 antibody, Bardet-Biedl syndrome 1 homolog antibody, Bardet-Biedl syndrome 1 protein antibody, BBS1 antibody, BBS1_HUMAN antibody, BBS2-like protein 2 antibody, BBS2L2 antibody, D19Ert609e antibody

UniProt:	Q8NFJ9
----------	------------------------

Pathways:	Hedgehog Signaling
-----------	------------------------------------

Application Details

Application Notes:	Recommended dilution: WB:1:500-1:5000, IHC:1:20-1:200, IF:1:50-1:200,
--------------------	---

Restrictions:	For Research Use only
---------------	-----------------------

Handling

Format:	Liquid
---------	--------

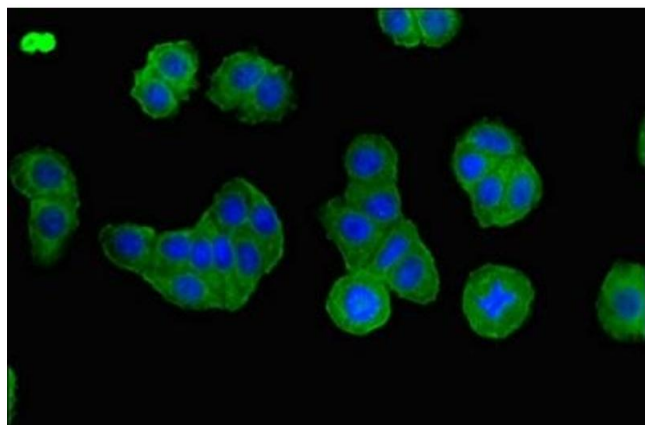
Buffer:	Preservative: 0.03 % Proclin 300 Constituents: 50 % Glycerol, 0.01M PBS, PH 7.4
---------	--

Preservative:	ProClin
---------------	---------

Precaution of Use:	This product contains ProClin: a POISONOUS AND HAZARDOUS SUBSTANCE which should be handled by trained staff only.
--------------------	---

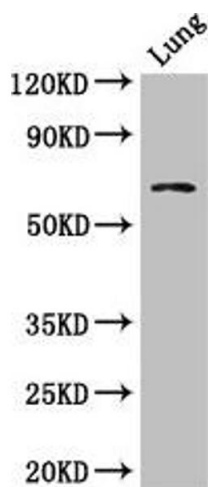
Storage:	-20 °C,-80 °C
----------	---------------

Storage Comment:	Upon receipt, store at -20°C or -80°C. Avoid repeated freeze.
------------------	---



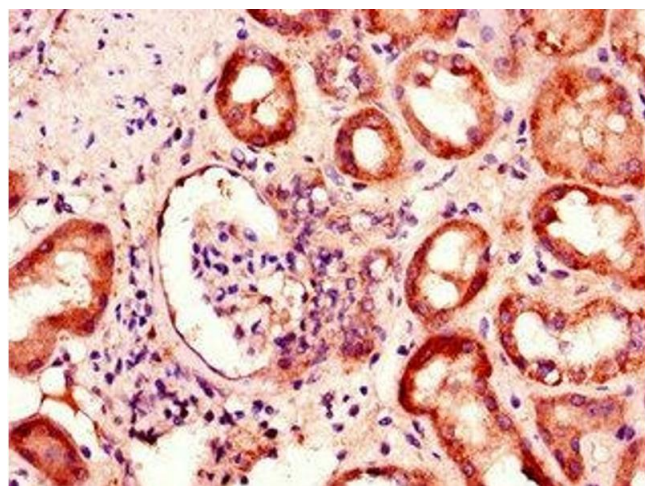
Immunofluorescence

Image 1. Immunofluorescent analysis of HepG2 cells using ABIN7145231 at dilution of 1:100 and Alexa Fluor 488-conjugated AffiniPure Goat Anti-Rabbit IgG(H+L)



Western Blotting

Image 2. Western Blot Positive WB detected in: Mouse lung tissue All lanes: BBS1 antibody at 1 µg/mL Secondary Goat polyclonal to rabbit IgG at 1/50000 dilution Predicted band size: 66, 70, 50 kDa Observed band size: 66 kDa



Immunohistochemistry

Image 3. Immunohistochemistry of paraffin-embedded human kidney tissue using ABIN7145231 at dilution of 1:100

Please check the [product details page](#) for more images. Overall 4 images are available for ABIN7145231.